



USB driver

Table of Contents

General	1
Installation	1
Windows 7	2
Windows Vista	7
Windows XP	12
Windows 2000	16
Configuring the virtual COM port	24
Uninstalling.....	25

General

The USB drivers are required for communication via the USB interface between PC and bootloader or D-LOGGusb and for this purpose provide a virtual COM- port at the computer. The drivers comprise two parts, which must be installed one after the other. "*USB Serial Converter*" for basic functionality and "*USB Serial Port*" for the virtual COM port.

The drivers must be installed once on the PC (see "*Installation*"), and are then subsequently loaded automatically, if a bootloader or D-LOGGusb is connected to the PC.

The required drivers are contained in the attached CD-ROM in the folder <\install\USB-Treiber>, can be downloaded from the homepage <http://www.ta.co.at> or can also be installed via Windows Update.

Installation

If a bootloader or D-LOGGusb is connected via a USB cable to the PC, the PC automatically recognizes a new hardware component and automatically starts the found new hardware wizard if a driver has not yet been installed for this device.

If the wizard is not automatically called, the installation can also be started manually. As long as the device is connected to the PC and the drivers are not completely installed, it is displayed in the Windows **Device manager** with an exclamation mark in one of the lists <*Other devices*>, <*Ports (COM and LPT)*> or <*USB controllers*>. Manual installation of the drivers can be started from here.

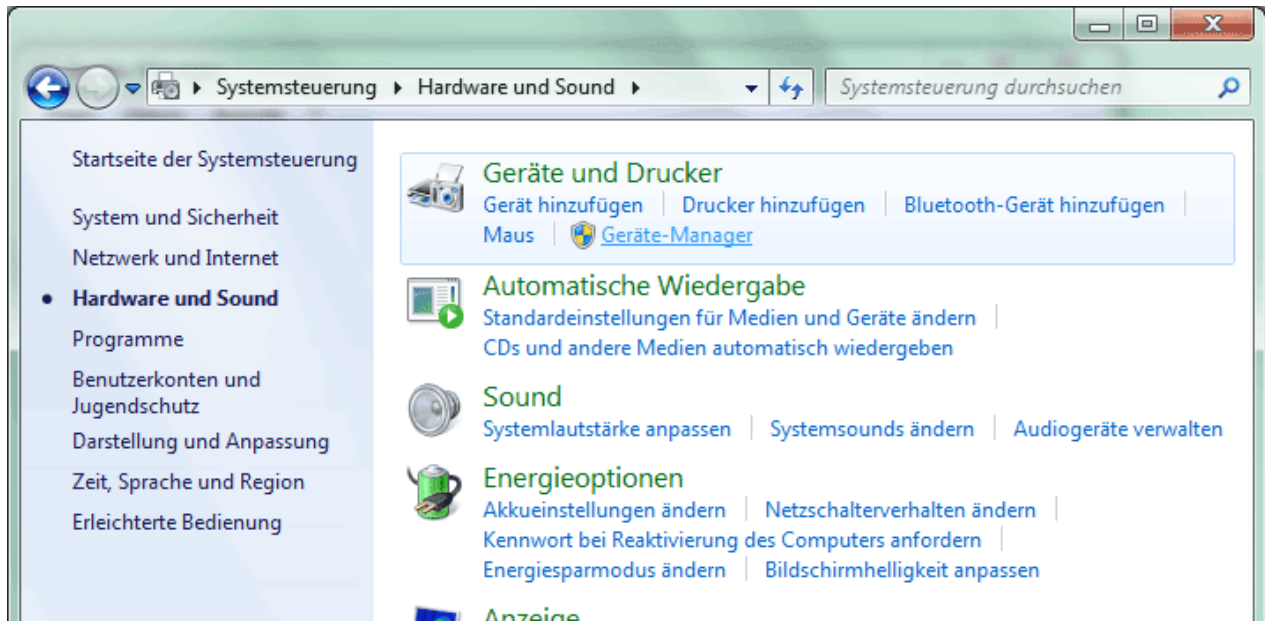
Windows 7

If an Internet connection is available, Windows 7 connects automatically to the Windows Update website to install a suitable driver. In this case no further steps are necessary.

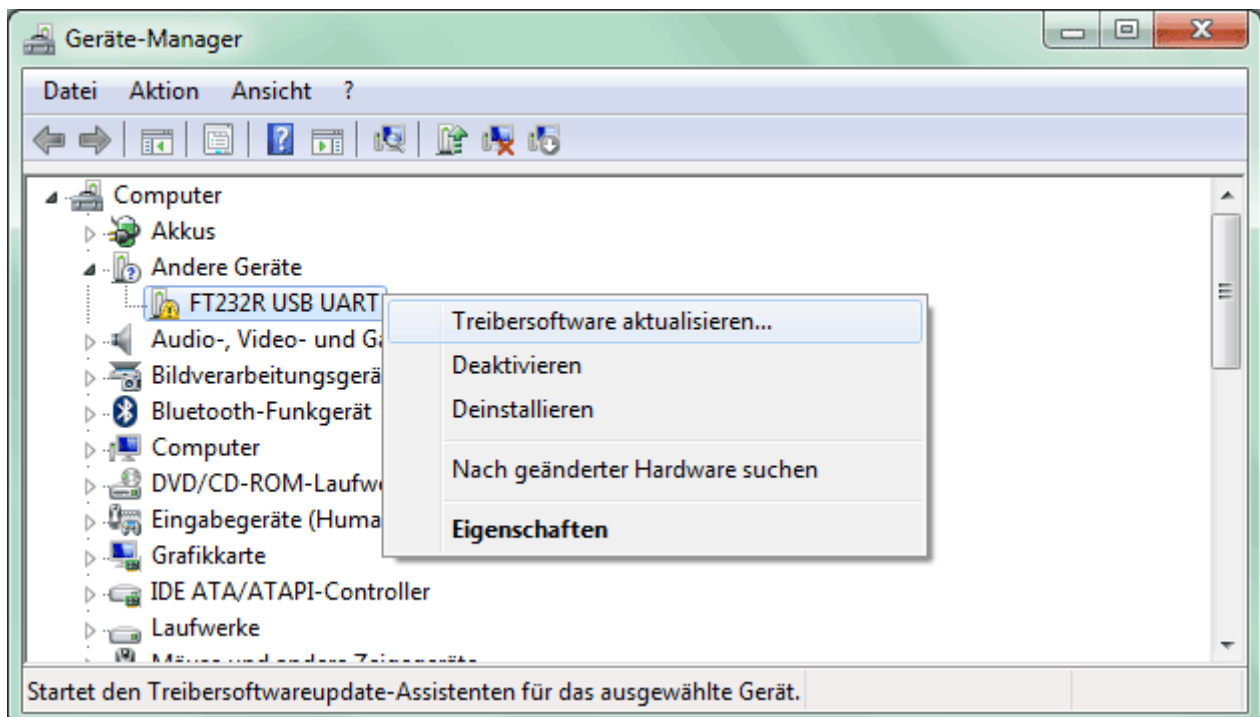
If an Internet connection is not available, or no suitable driver has been found or if Windows 7 is configured to prevent the automatic installation of drivers, the required drivers can be manually installed as follows.

1. Call up Windows Device Manager:

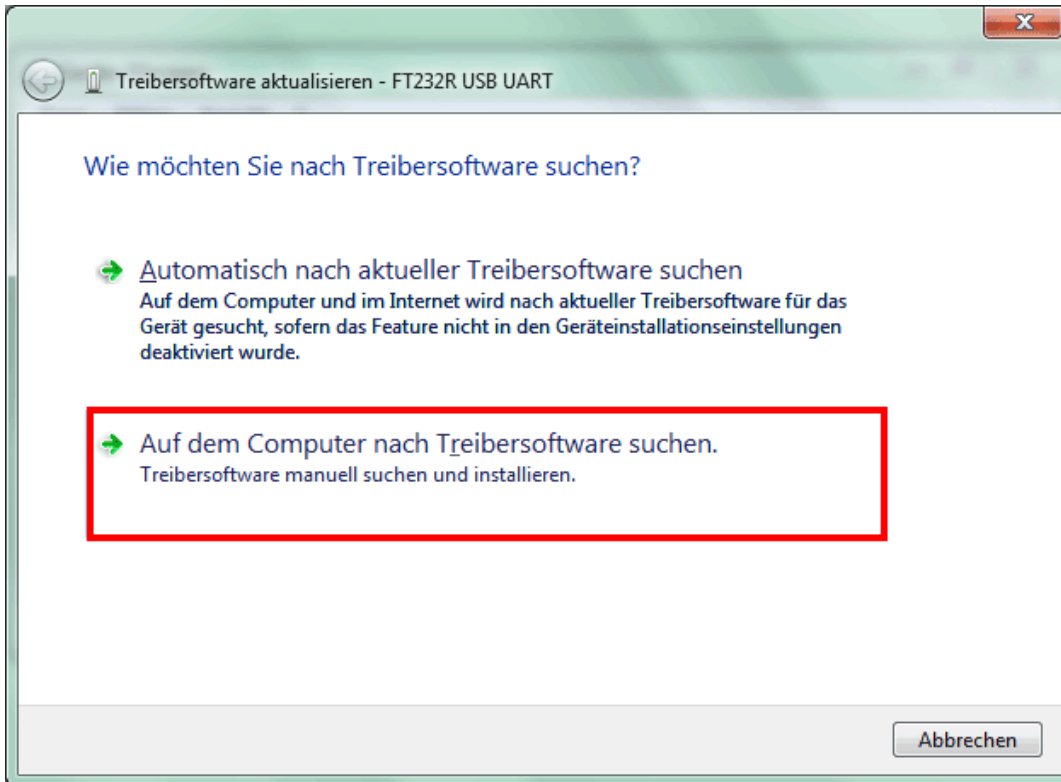
Start ⇒ Control Panel ⇒ Hardware and sound ⇒ Device Manager



2. The device <FT232R USB UART> is displayed in the list <Other devices> (Andere Geräte) with a yellow warning triangle. Right clicking this device and selection of the option <Update driver software...> (Treibersoftware aktualisieren...) allows the required driver to be installed.

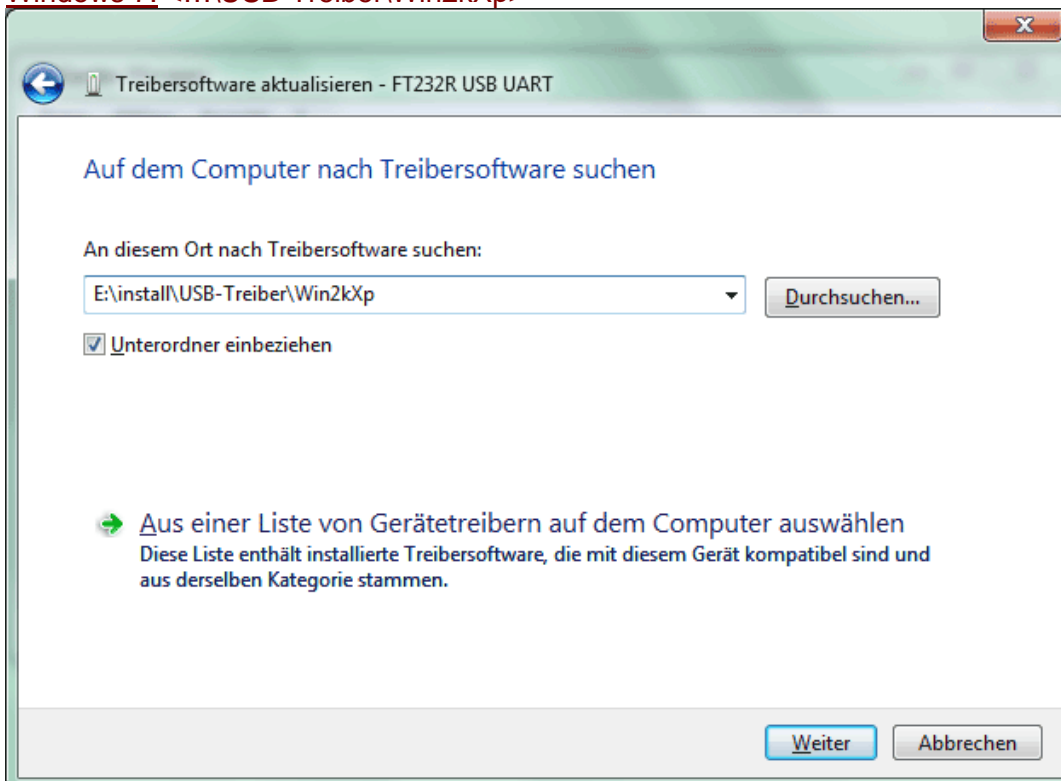


3. Select option *<Browse for driver software.>* (Auf dem Computer nach Treibersoftware suchen.).

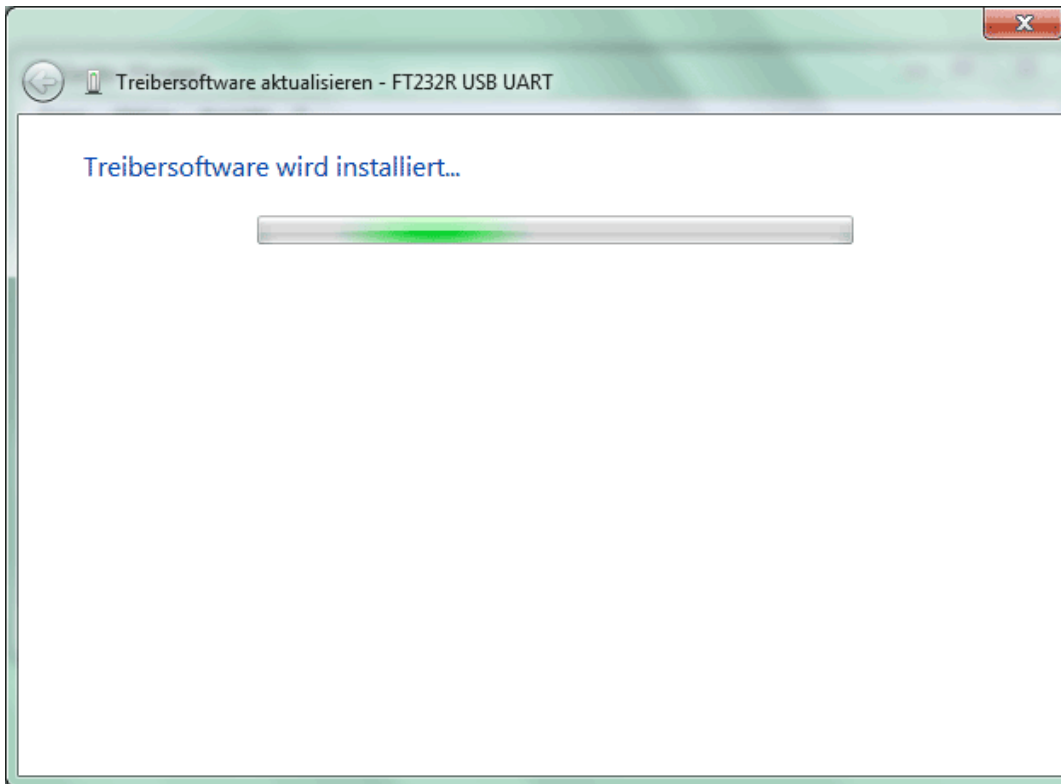


4. In the next step the path to the driver files must be specified:

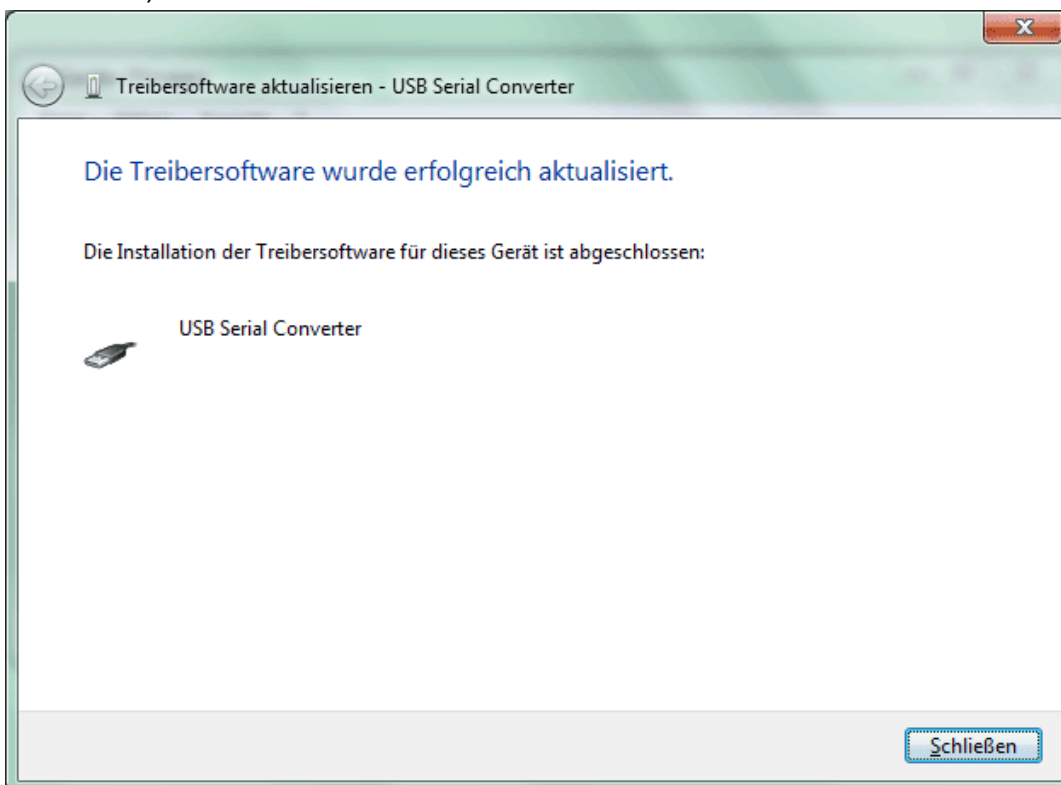
Windows 7: *<...\USB-Treiber\Win2kXp>*



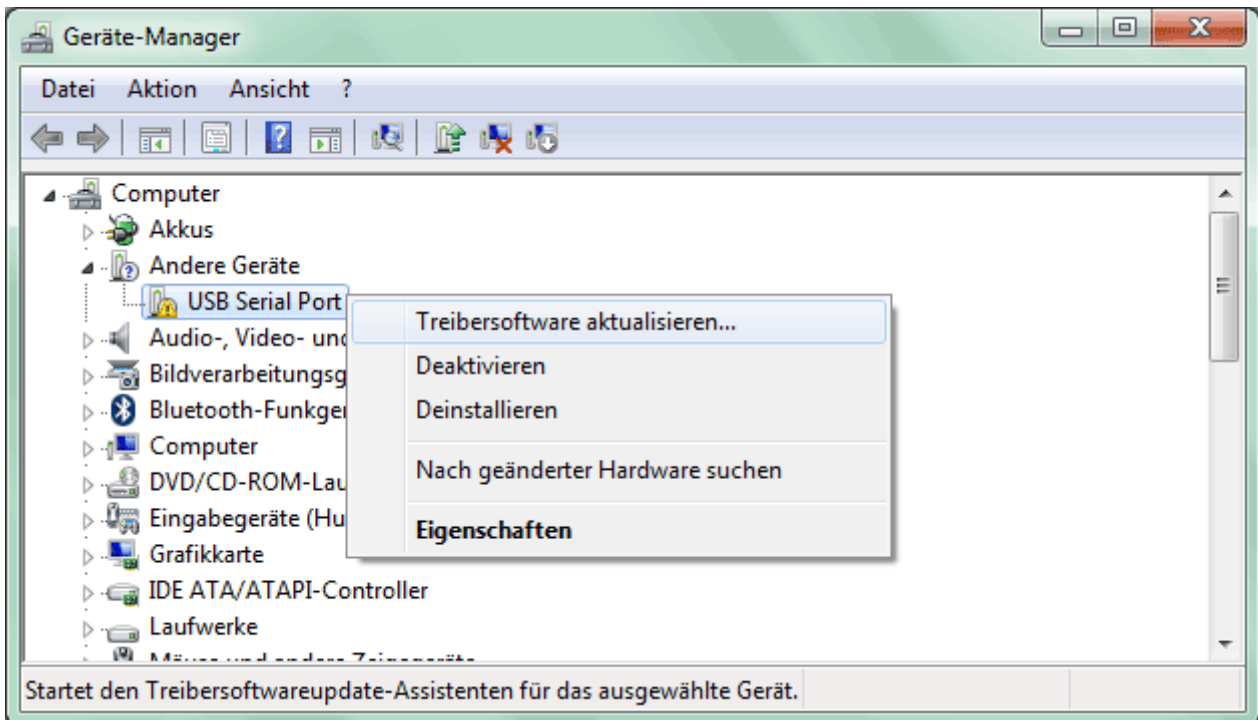
5. The drivers found in the specified path are installed.



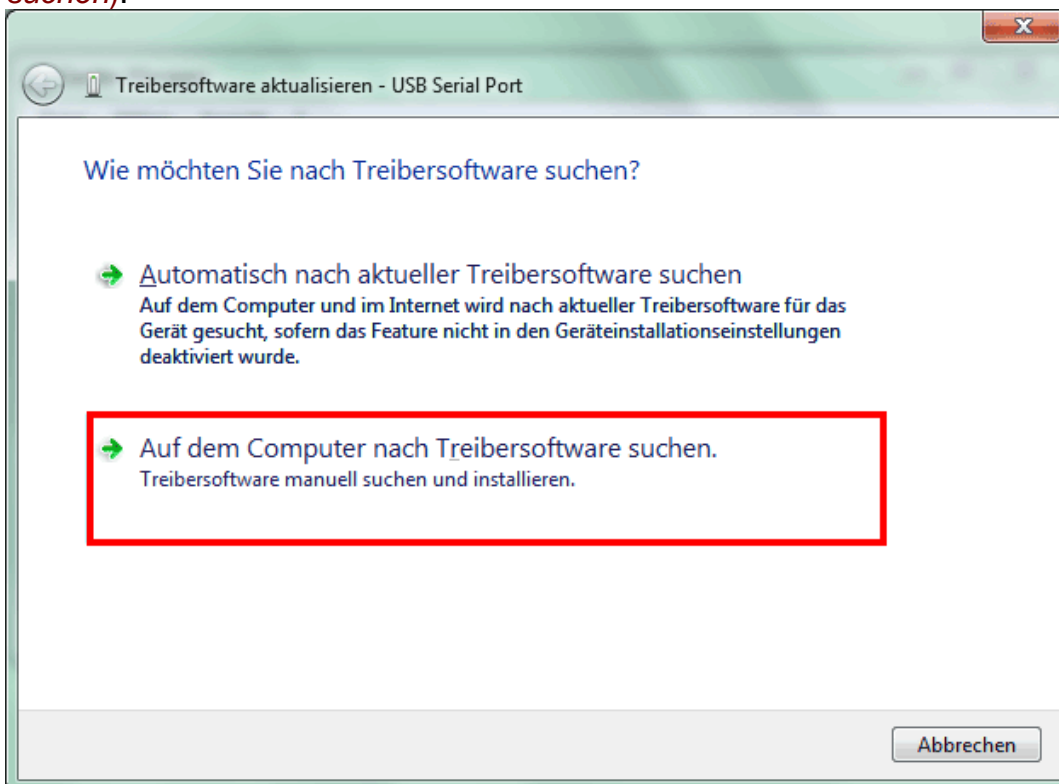
6. Click "Close" ("Schließen") to complete installation of the USB controller driver (*USB Serial Converter*).



7. The device *<USB serial port>* is displayed in the list *<Other devices>* (*Andere Geräte*) with a yellow warning triangle. Right clicking this device and selection of the option *<Update driver software...>* (*Treibersoftware aktualisieren...*) allows the required driver to be installed.

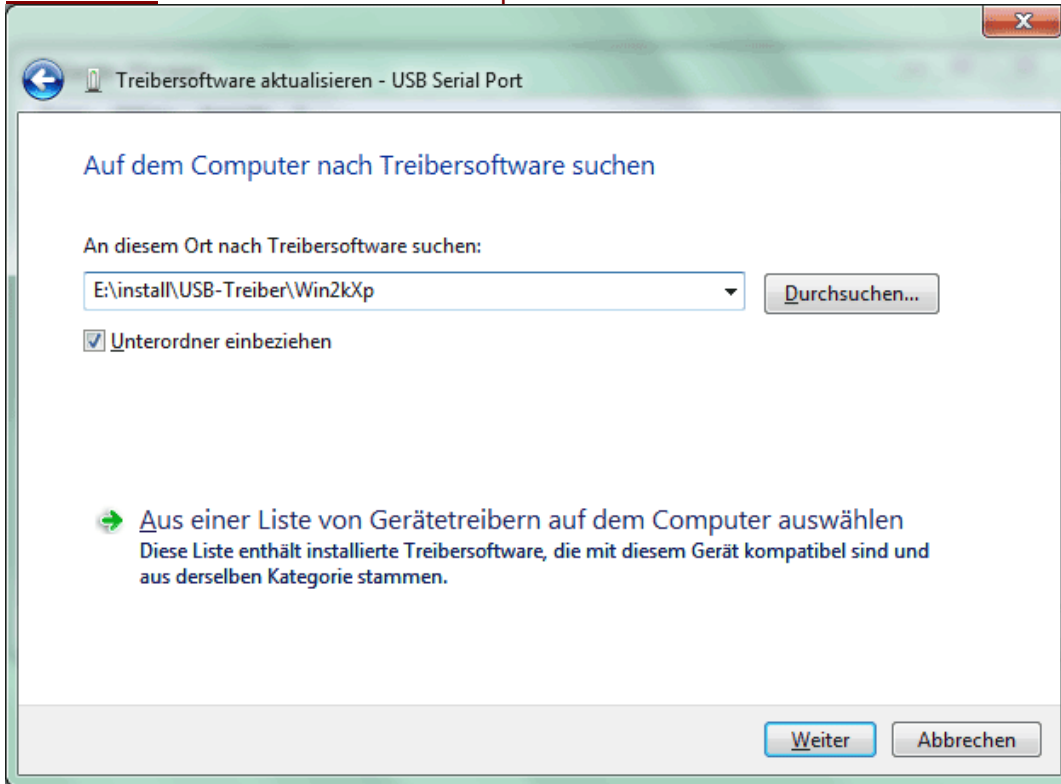


8. Select option *<Browse for driver software>* (*Auf dem Computer nach Treibersoftware suchen*).

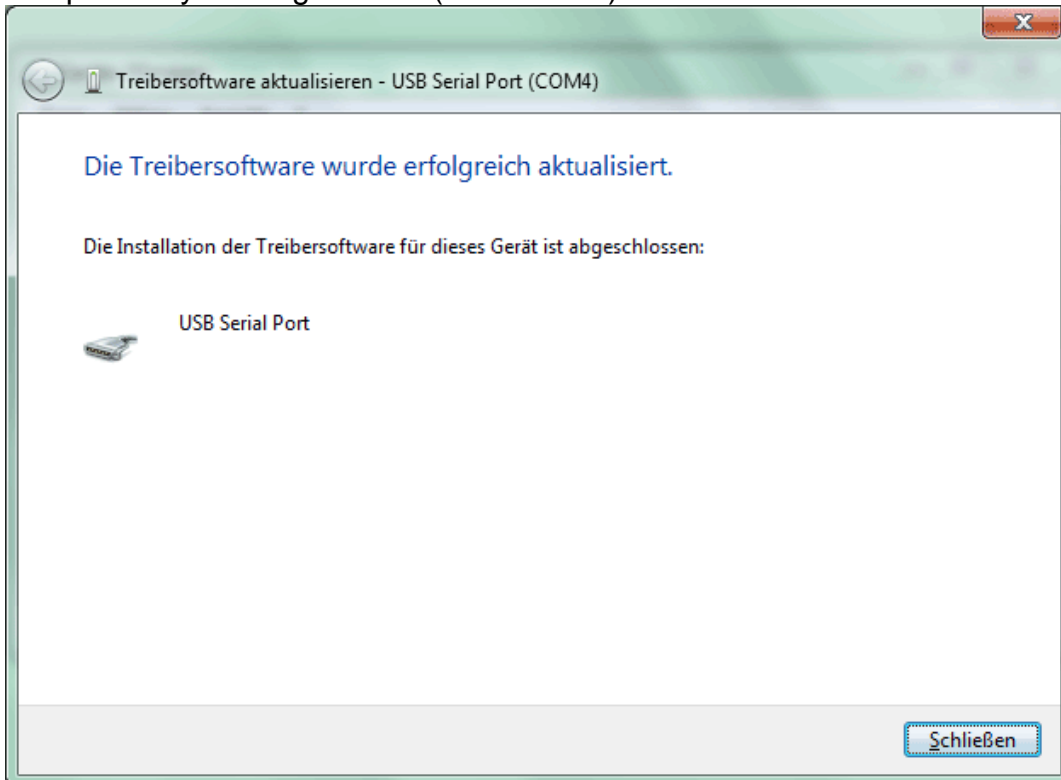


9. In the next step the path to the driver files must be specified:

Windows 7: <...\USB- Treiber\Win2kXp>



10. After successful installation of the driver for the virtual COM port (*USB Serial Port*), installation of all the components necessary for communication via the USB interface is completed by clicking "Close" ("Schließen").

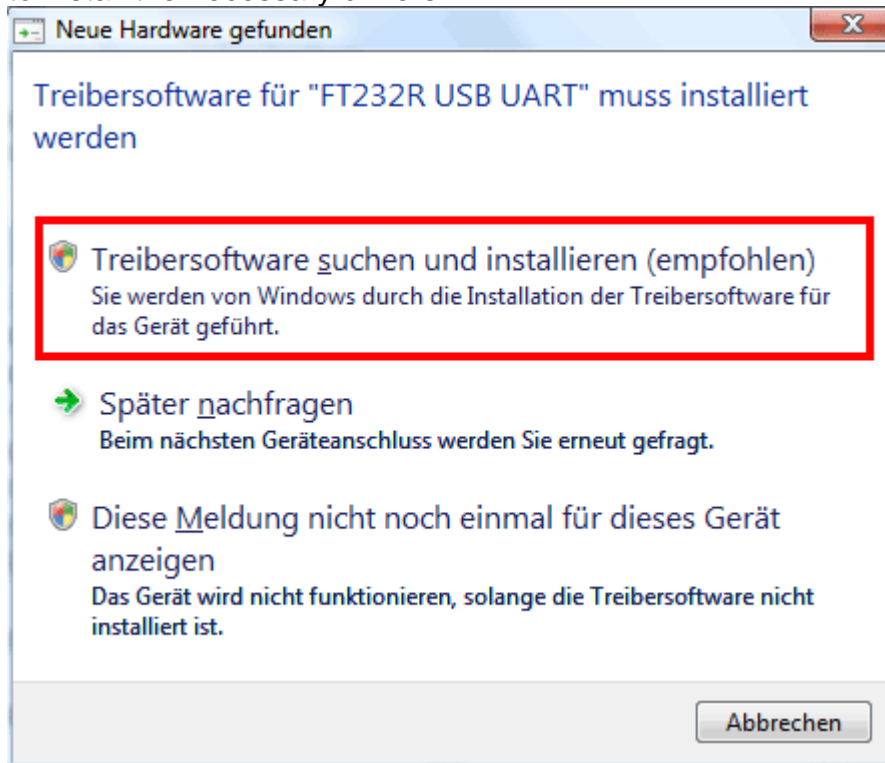


Windows Vista

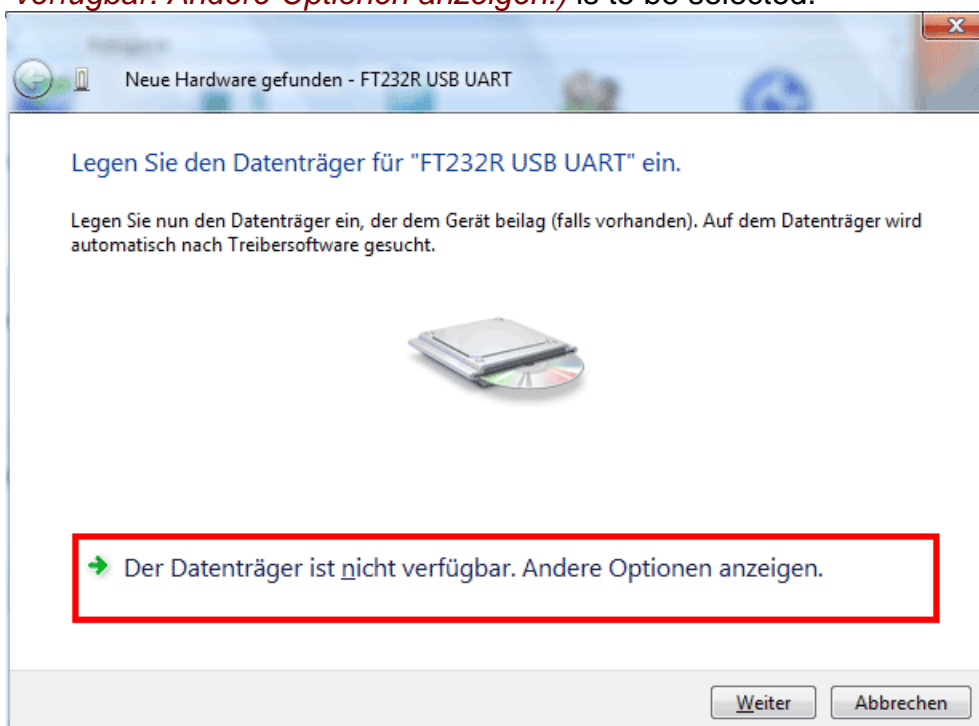
If an Internet connection is available, Windows Vista connects automatically to the Windows Update website to install a suitable driver. In this case no further steps are necessary.

If an Internet connection is not available, or no suitable driver has been found or if Windows Vista is configured to prevent the automatic installation of drivers, the following dialogue for manual driver installation is displayed.

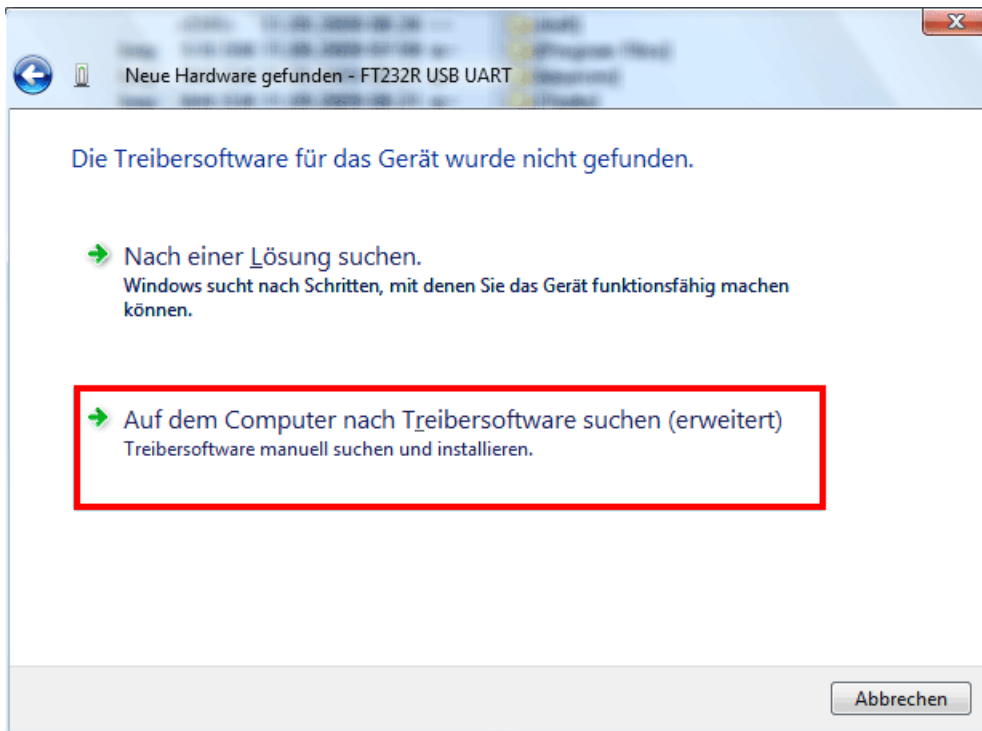
1. Select option < *Find driver software and install*> (*Treibersoftware suchen und installieren*) to install the necessary drivers.



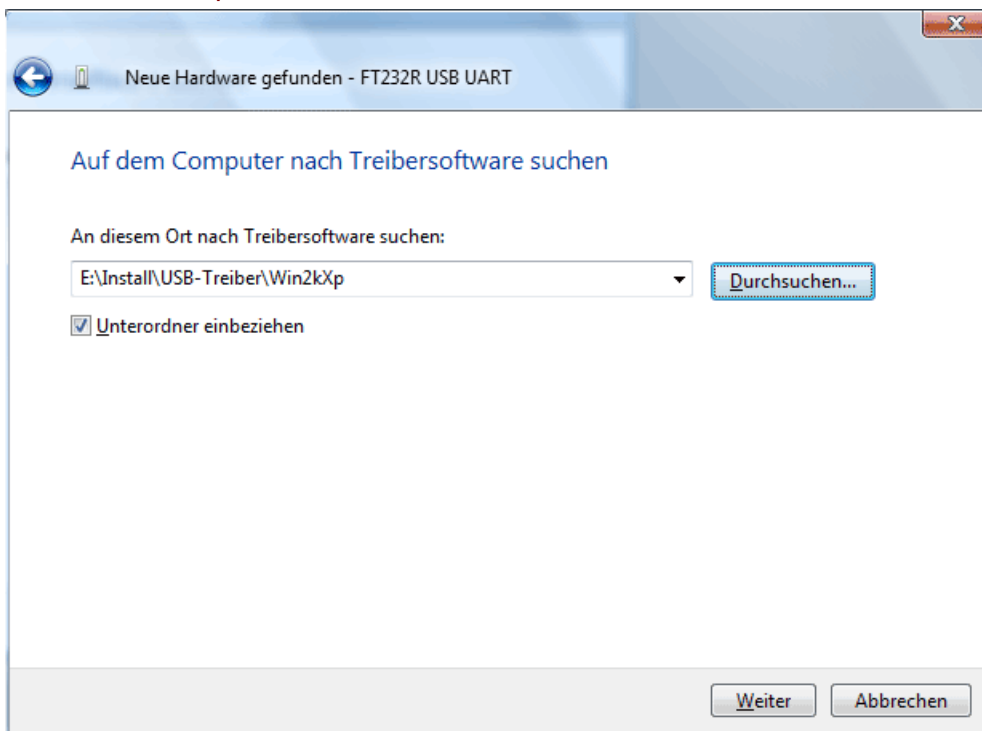
2. Option < *Cannot find data medium. Display other options.*> (*Der Datenträger ist nicht verfügbar. Andere Optionen anzeigen.*) is to be selected.



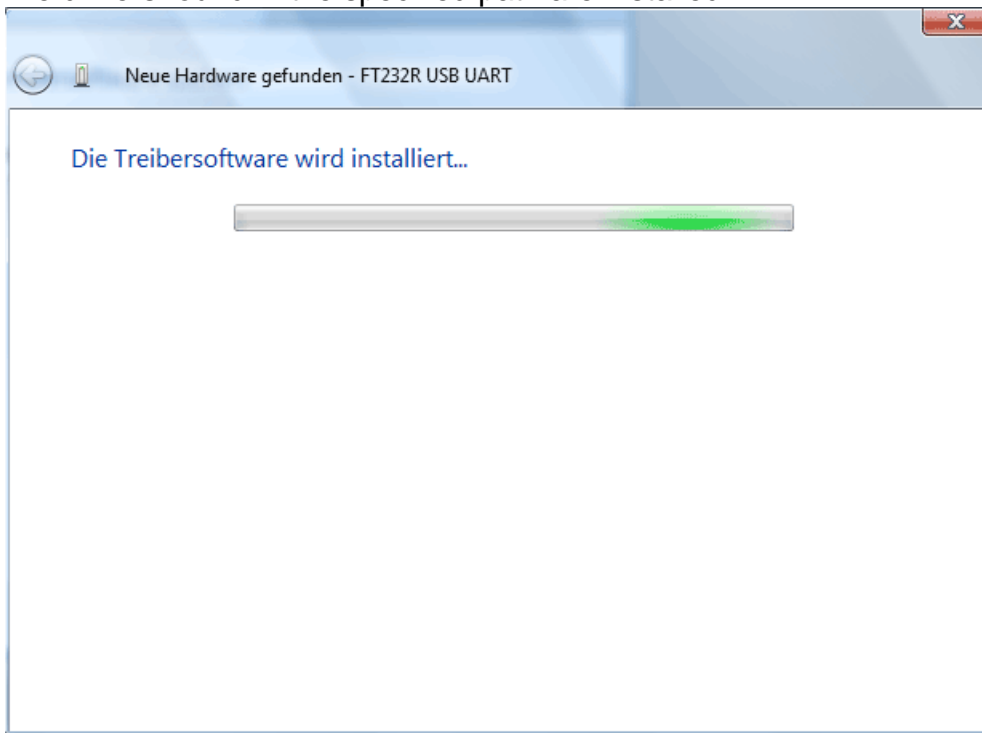
3. Select option < *Search the computer for driver software*> (*Auf dem Computer nach Treibersoftware suchen*).



4. In the next step the path to the driver files must be specified: Windows Vista: <...\\USB-Treiber\\Win2kXp>



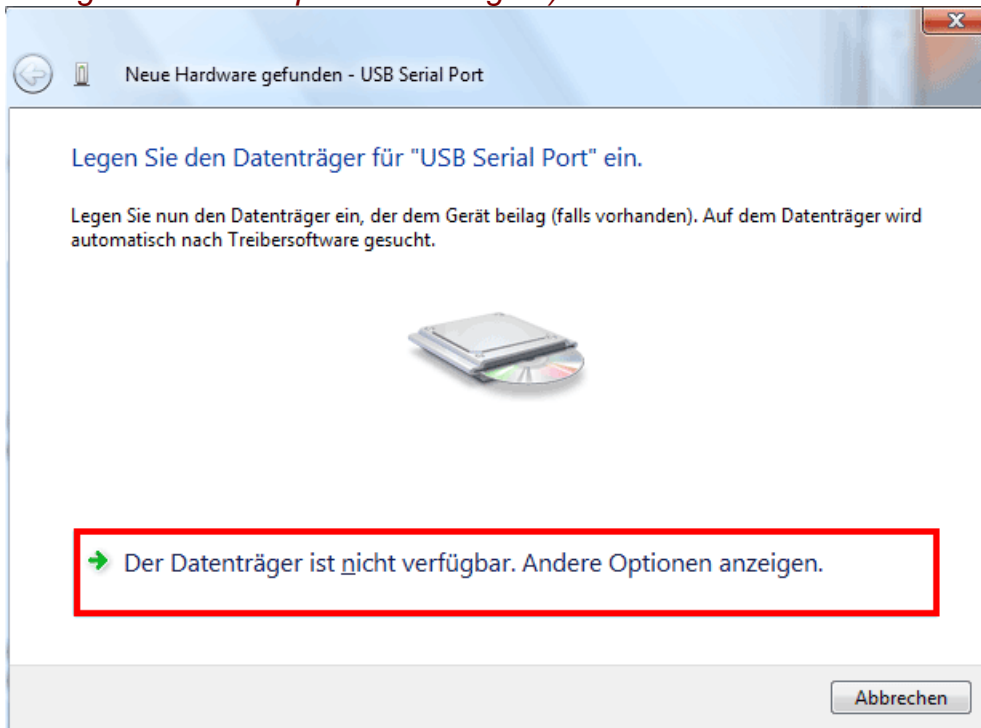
5. The drivers found in the specified path are installed.



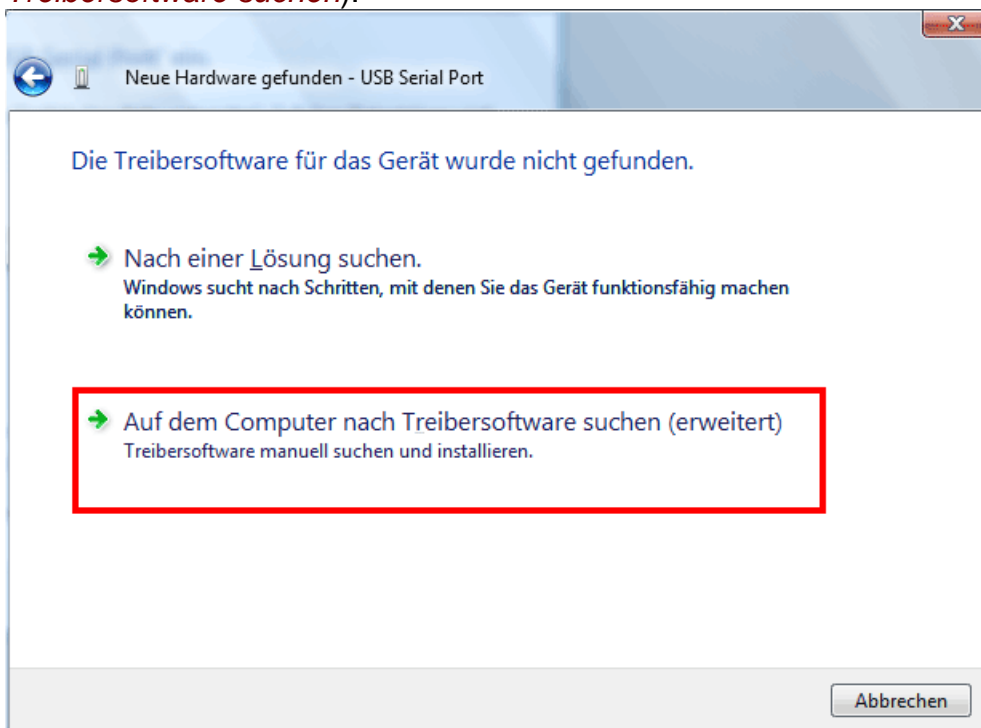
6. Click "Close" ("Schließen") to complete installation of the USB controller driver (*USB Serial Converter*).



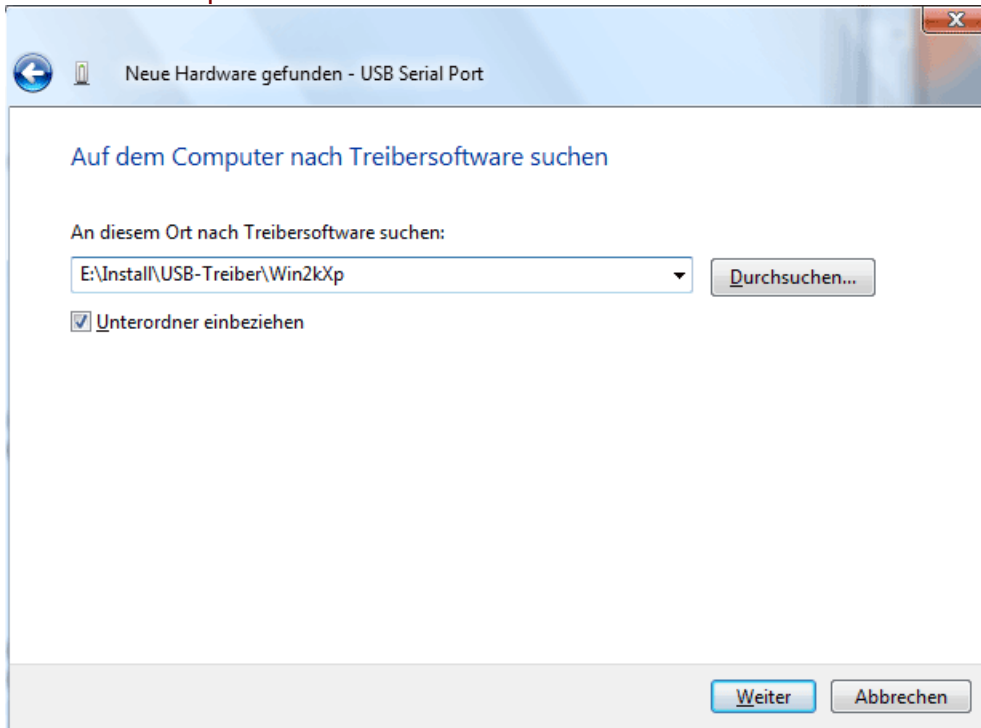
7. The hardware wizard continues with installation of the driver for the virtual COM-port (*USB Serial Port*). This driver is installed using the same procedure as the previous driver. Option < *Cannot find data medium. Display other options.* > (*Der Datenträger ist nicht verfügbar. Andere Optionen anzeigen.*) is to be selected.



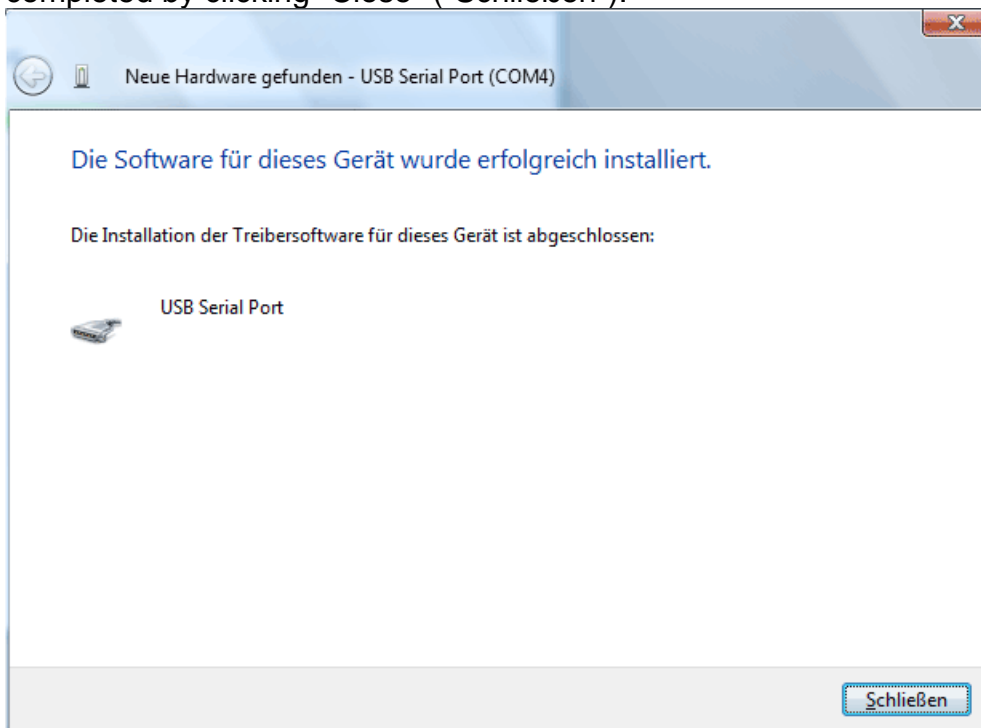
8. Select option < *Search the computer for driver software* > (*Auf dem Computer nach Treibersoftware suchen*).



9. In the next step the path to the driver files must be specified: Windows Vista: <...\USB-Treiber\Win2kXp>

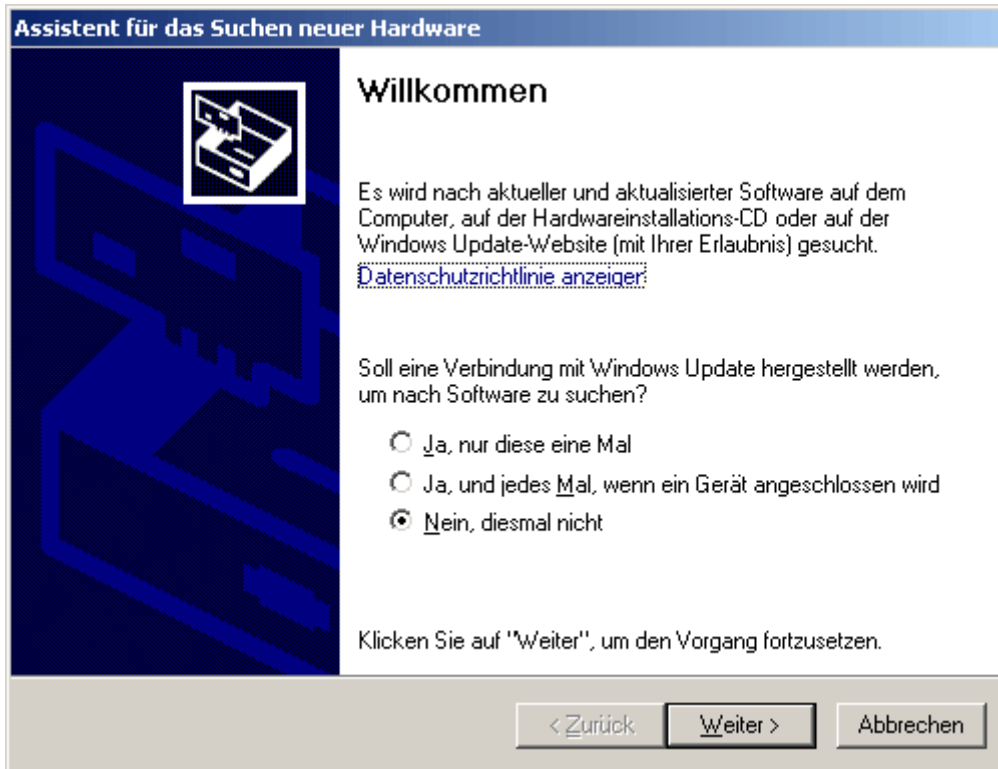


10. After successful installation of the driver for the virtual COM port *USB Serial Port*), installation of all the components necessary for communication via the USB interface is completed by clicking "Close" ("Schließen").

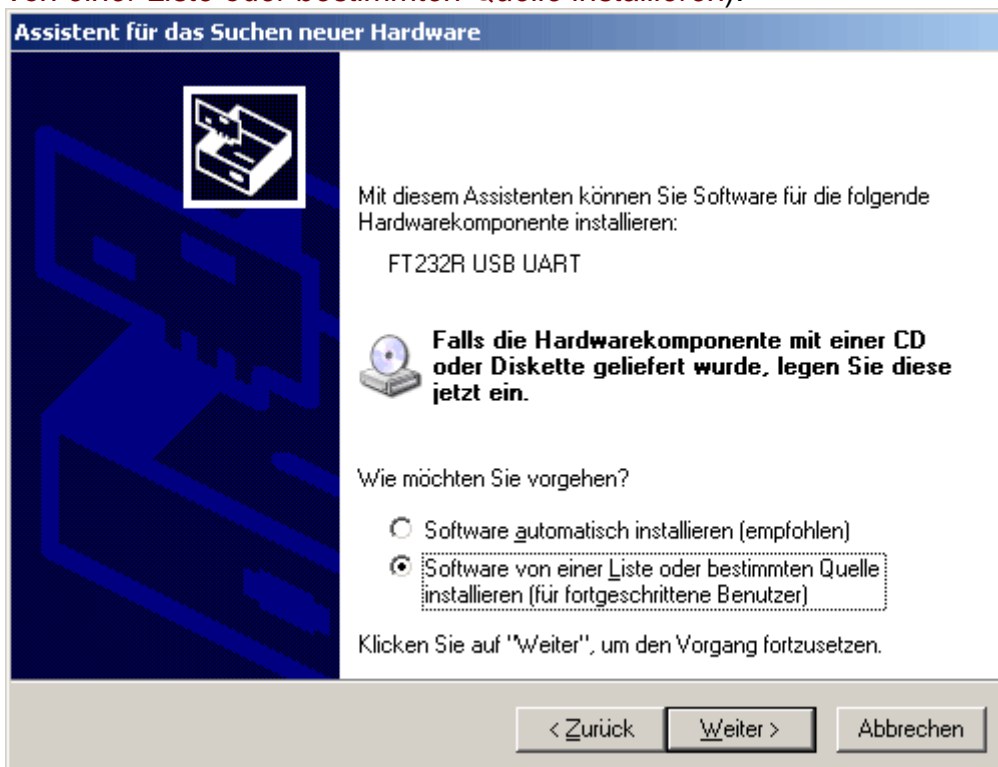


Windows XP

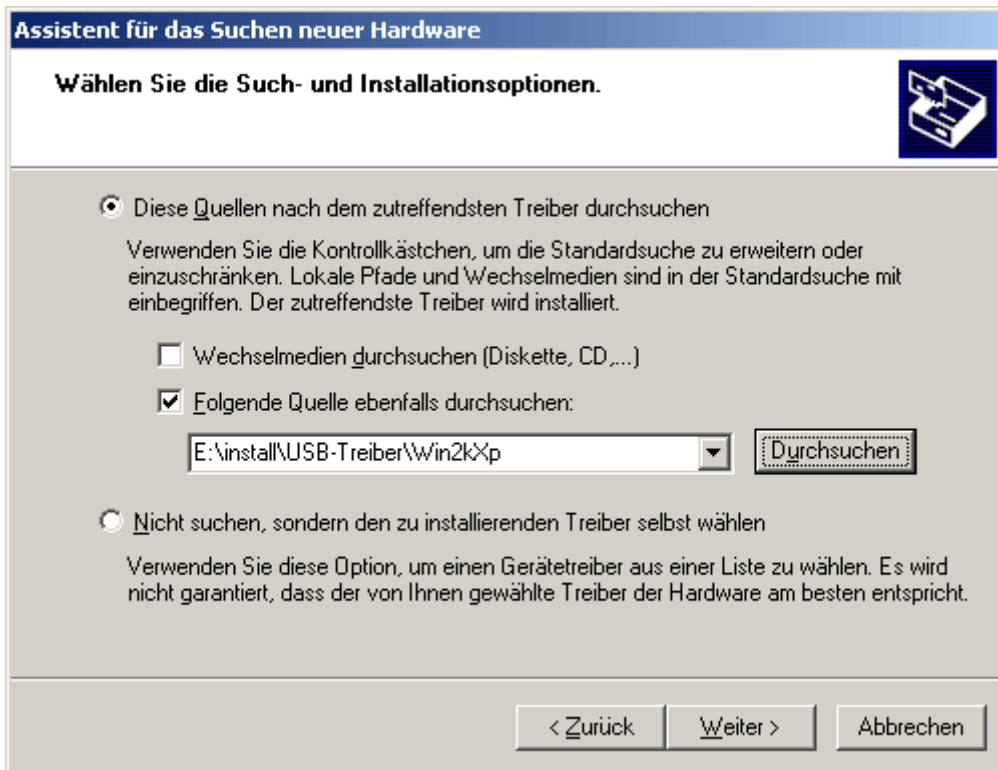
1. The found new hardware wizard can be used to install the necessary drivers. If an Internet connection is available, the drivers can be installed by selecting the option *<Yes, this time only>* (*Ja, nur dieses eine Mal*) from the Windows Update website. Otherwise the drivers can be manually installed as follows by selecting the option *<No, not this time>* (*Nein, diesmal nicht*) (e.g. from the supplied CD-ROM).



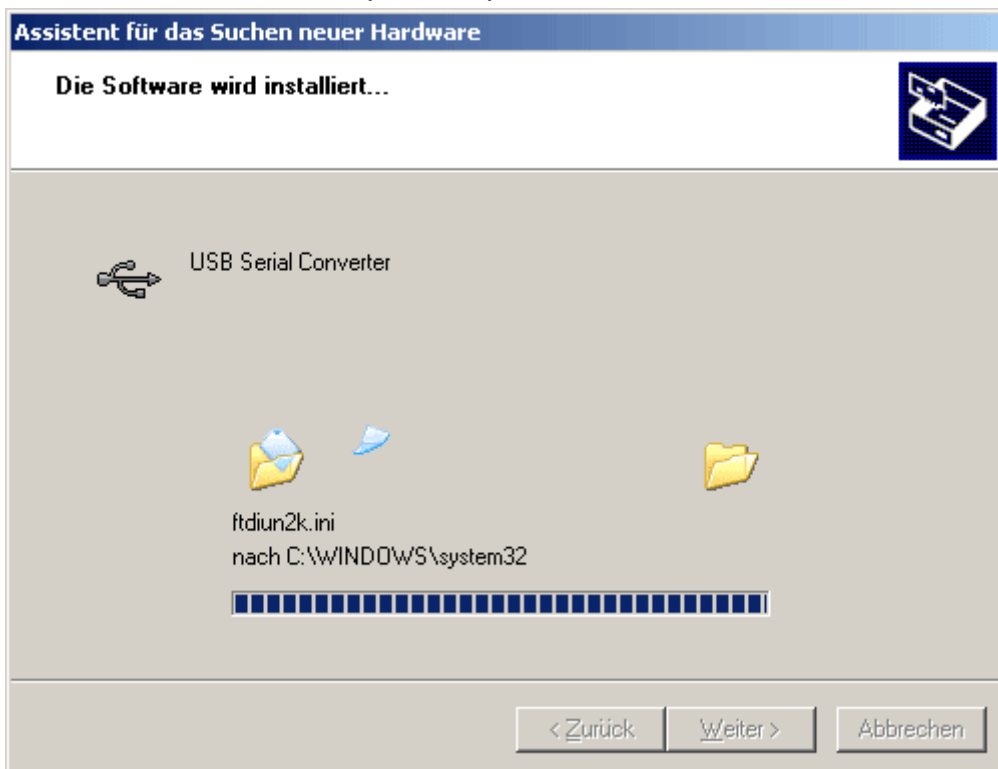
2. Continue by selecting option *<Install software from a list or specified source>* (*Software von einer Liste oder bestimmten Quelle installieren*).



3. In the next step the path to the driver files must be specified: Windows XP: <...\USB-Treiber\Win2kXp>



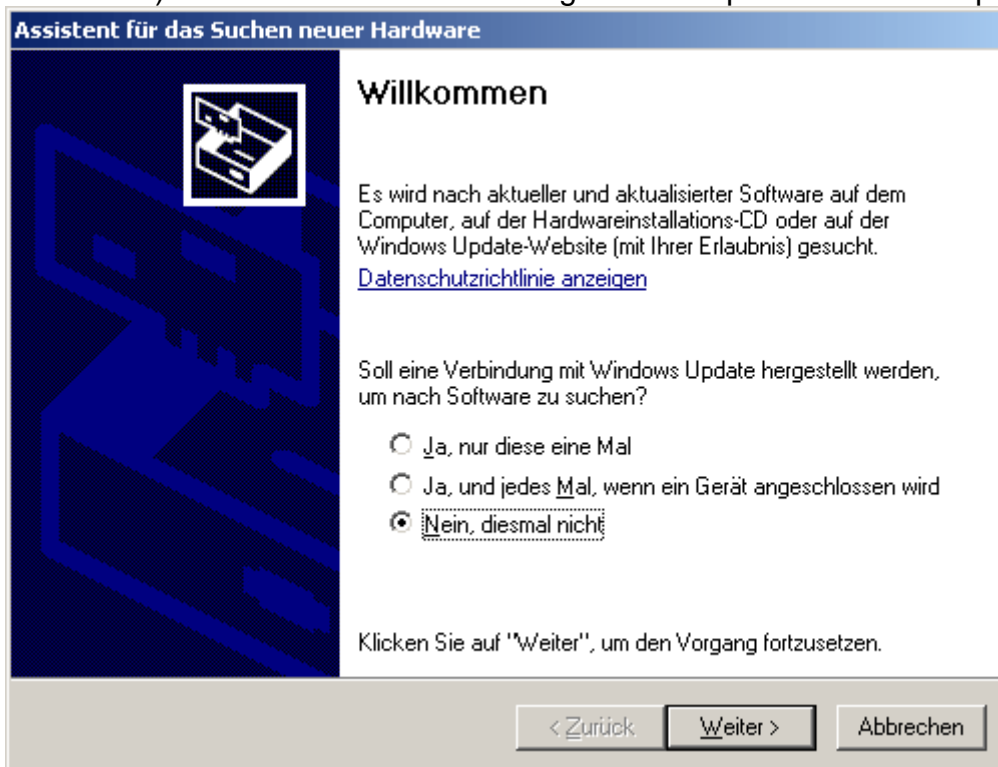
4. The drivers found in the specified path are installed.



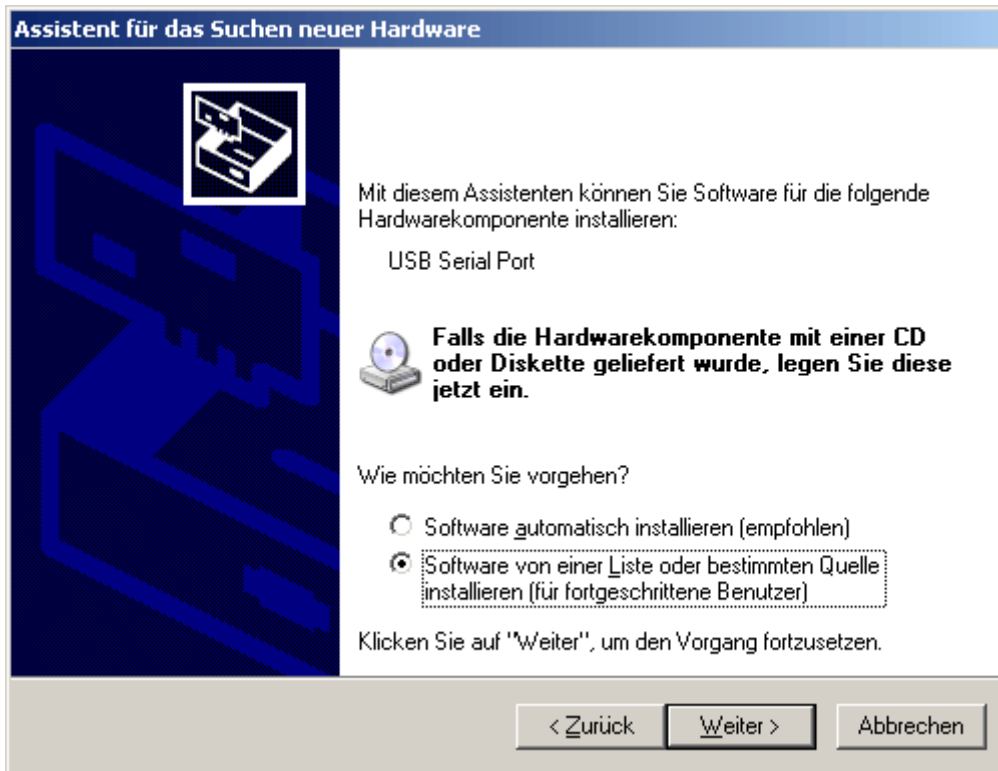
5. Click "Finish" ("Fertig stellen") to complete installation of the USB controller driver (*USB Serial Converter*).



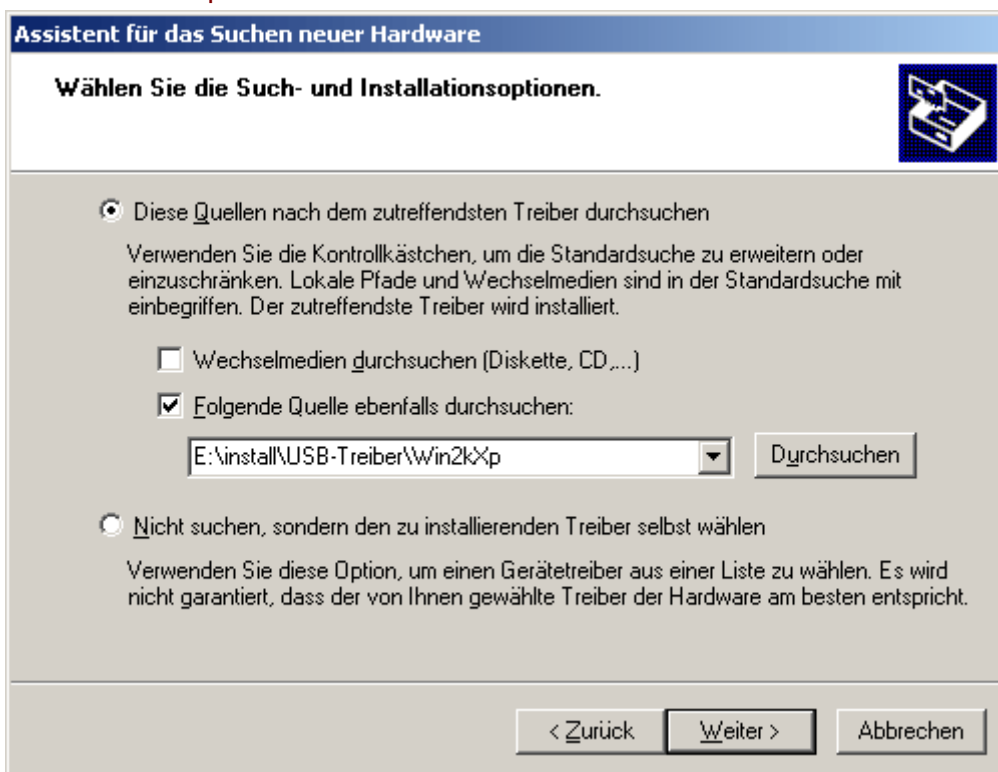
6. The hardware wizard continues with installation of the driver for the virtual COM-port (*USB Serial Port*). This driver is installed using the same procedure as the previous driver.



7. Continue by selecting option *<Install software from a list or specified source>* (*Software von einer Liste oder bestimmten Quelle installieren*).



8. In the next step the path to the driver files must be specified: Windows XP: *<...USB-Treiber\Win2kXp>*

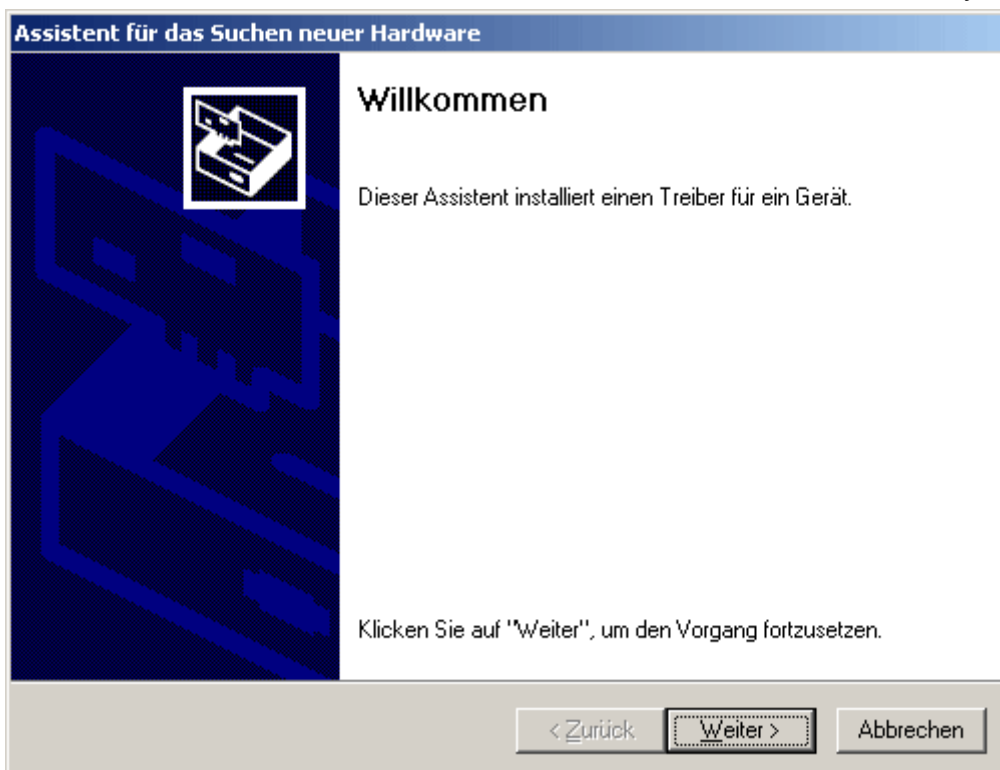


9. After successful installation of the driver for the virtual COM port (*USB Serial Port*), installation of all the components necessary for communication via the USB interface is completed by clicking "Finish" ("Fertig stellen").



Windows 2000

1. The found new hardware wizard can be used to install the necessary drivers.



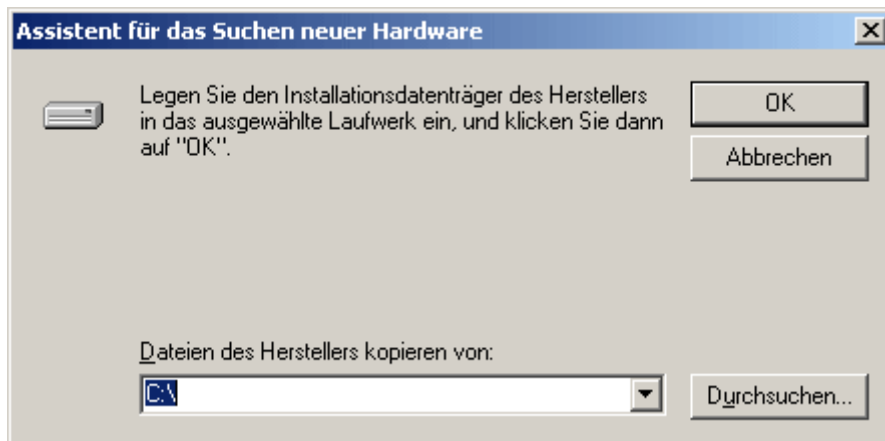
2. To continue, select option *<Search for a suitable device driver>* (*Nach einem passenden Treiber für das Gerät suchen*).



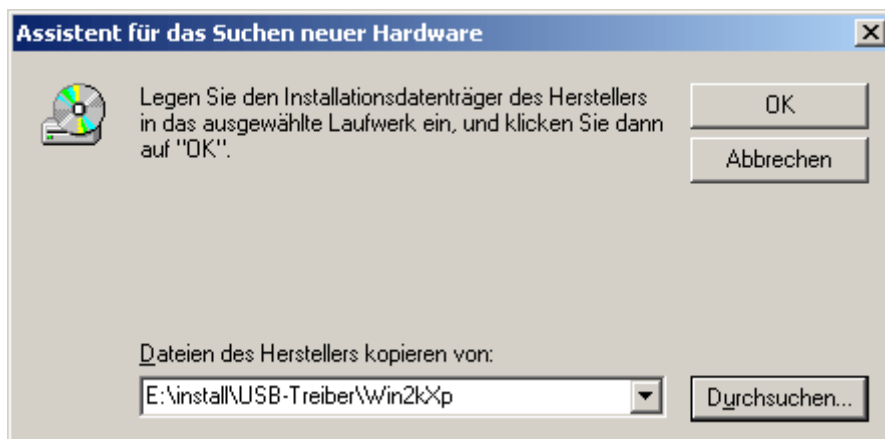
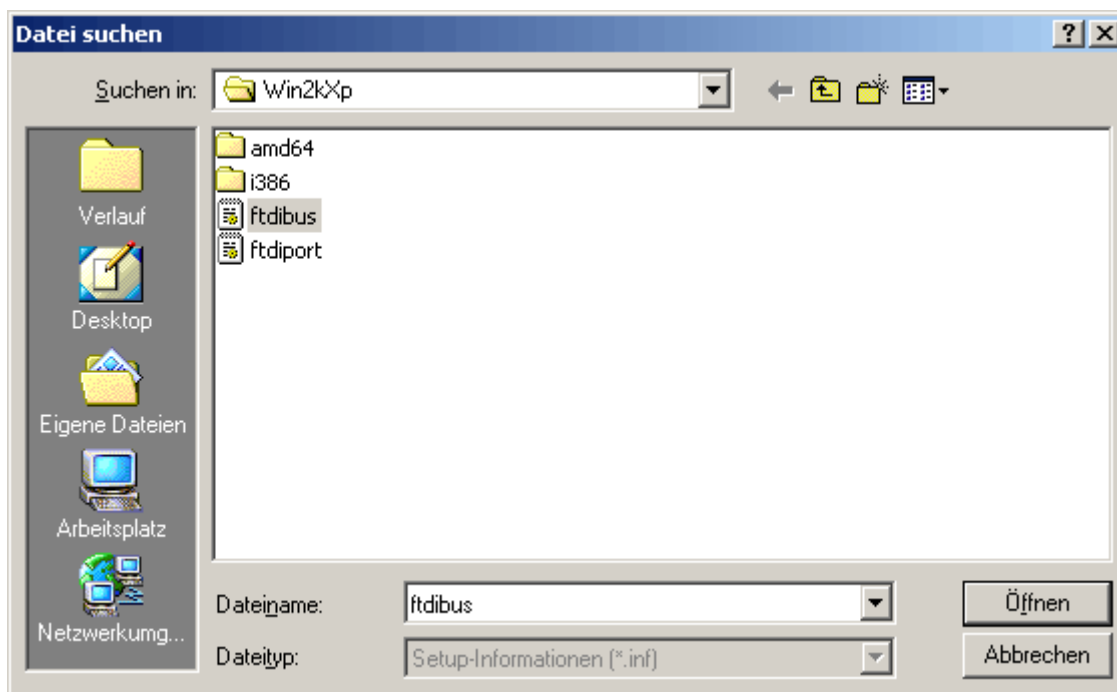
3. To specify a source path for the USB driver, select the option *<Specify another source>* (*Andere Quelle angeben*).



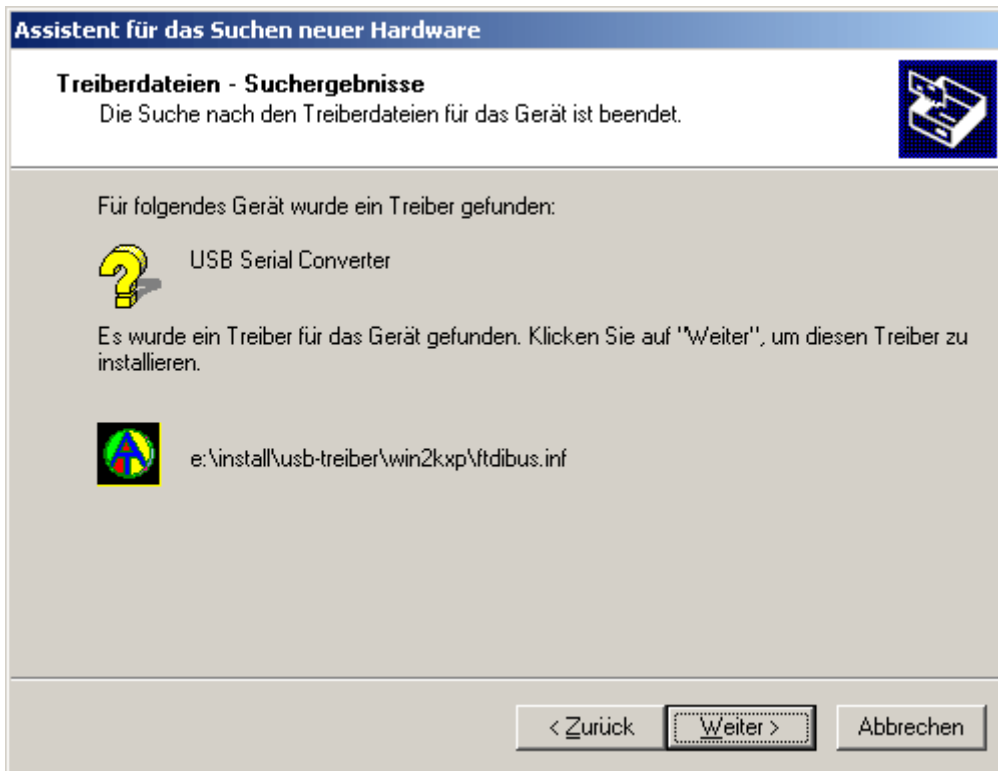
4. In the next step the path to the driver files must be specified: Windows 2000: <...\USB-Treiber\Win2kXp>



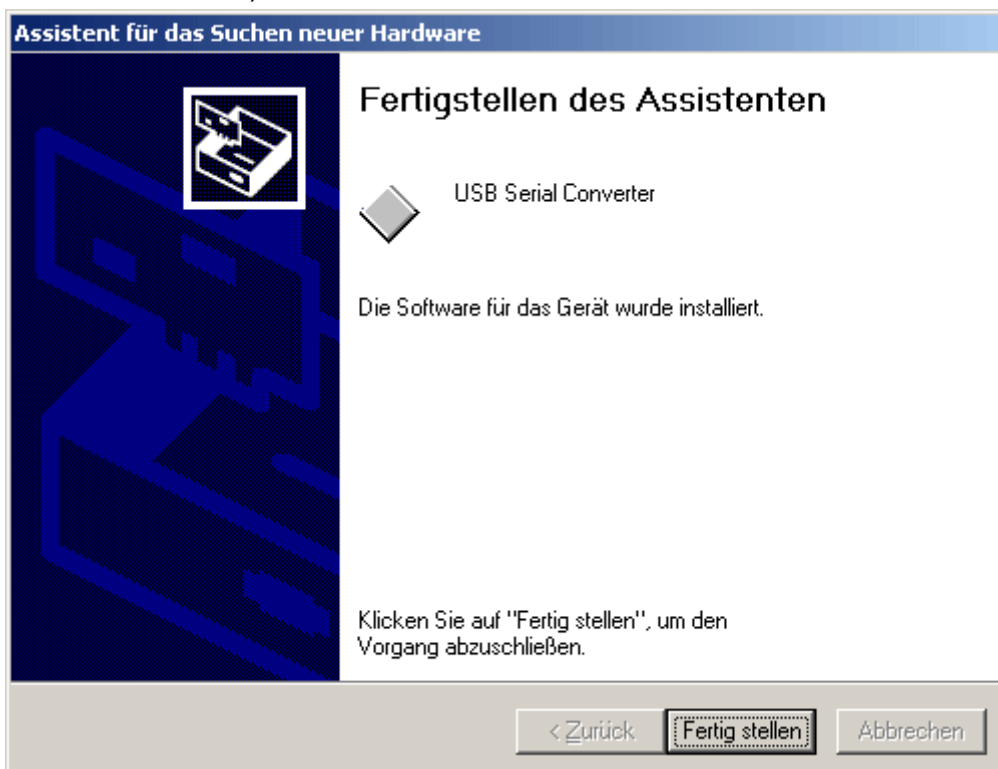
5. Click "Browse" ("*Durchsuchen*") to select the appropriate path and the .INF-file required for the installation. For the USB controller installation, <**USB Serial Converter**>, the file "**ftdibus.inf**" must be selected.



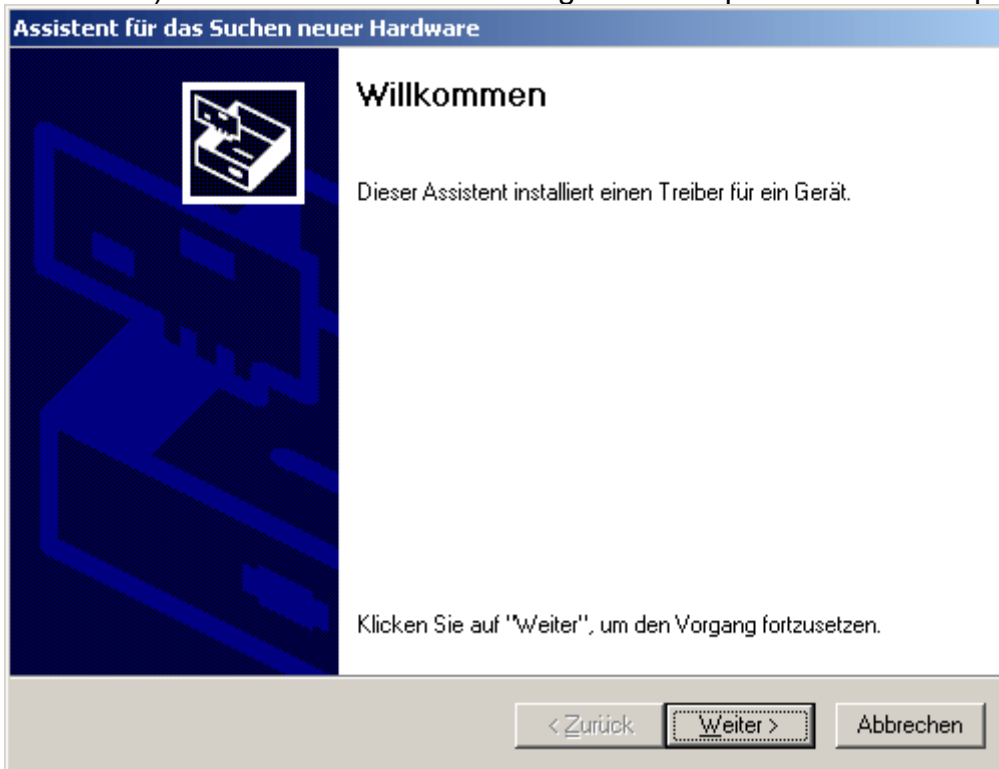
6. The drivers found in the specified path are installed by clicking "Next" ("Weiter").



7. Click "Finish" ("Fertig stellen") to complete installation of the USB controller driver (*USB Serial Converter*).



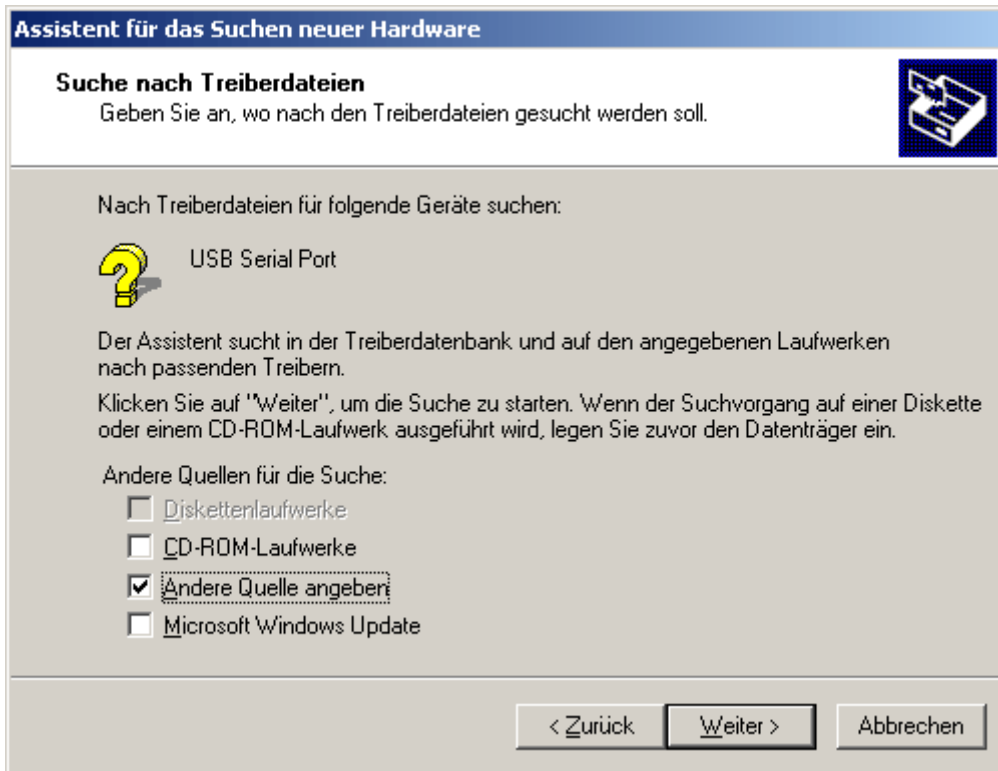
8. The hardware wizard continues with installation of the driver for the virtual COM-port (*USB Serial Port*). This driver is installed using the same procedure as the previous driver.



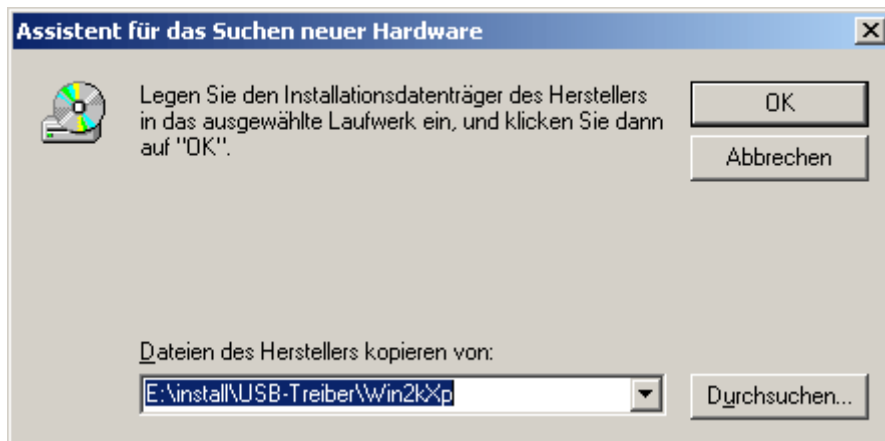
9. To continue, select option *<Search for a suitable device driver>* (*Nach einem passenden Treiber für das Gerät suchen*).



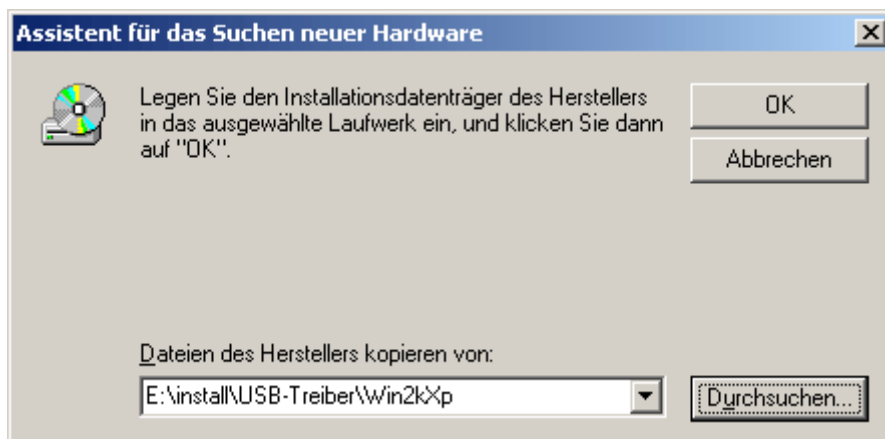
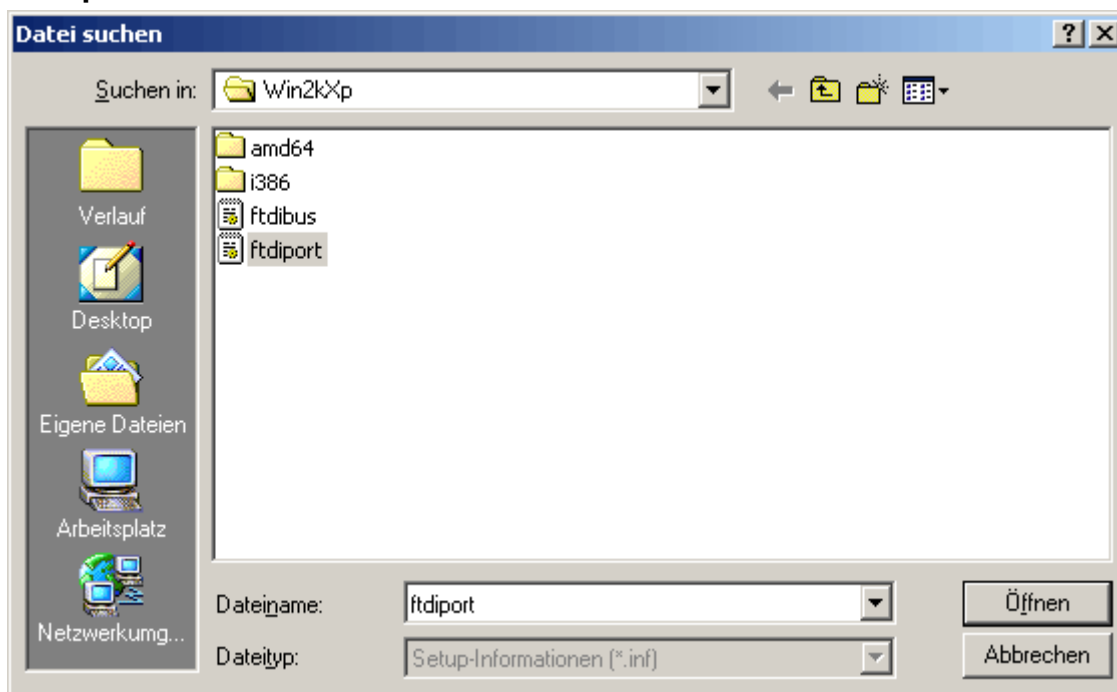
10. To specify a source path for the USB driver, select the option *<Specify another source>* (*Andere Quelle angeben*).



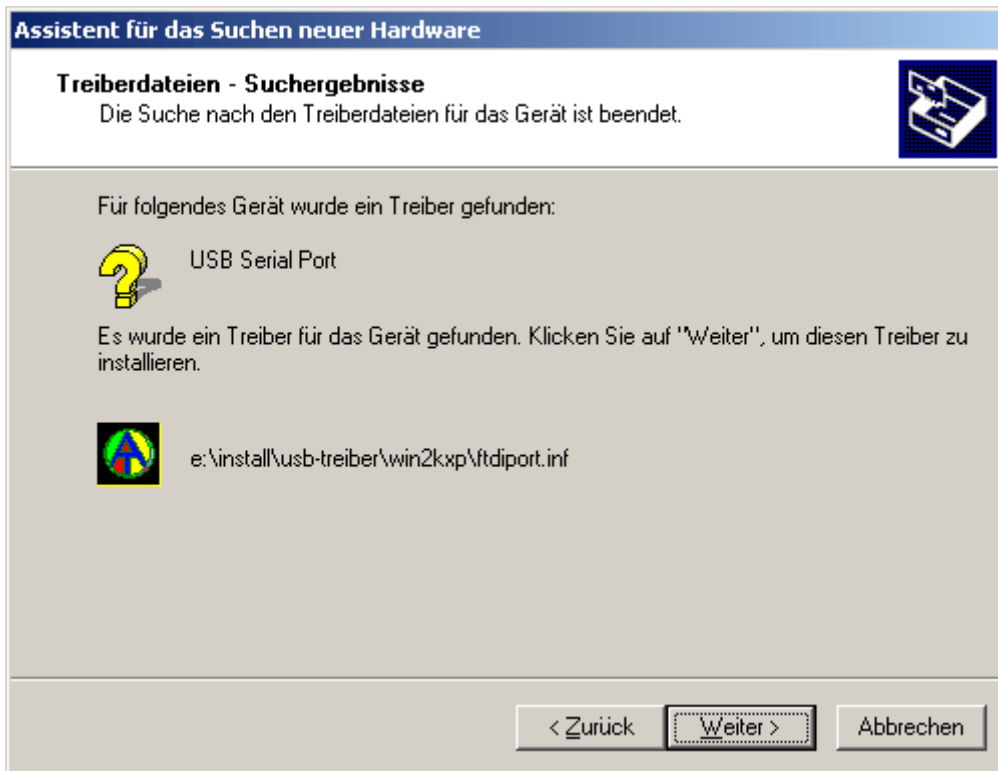
11. In the next step the path to the driver files must be specified: Windows 2000: <...\USB-Treiber\Win2kXp>



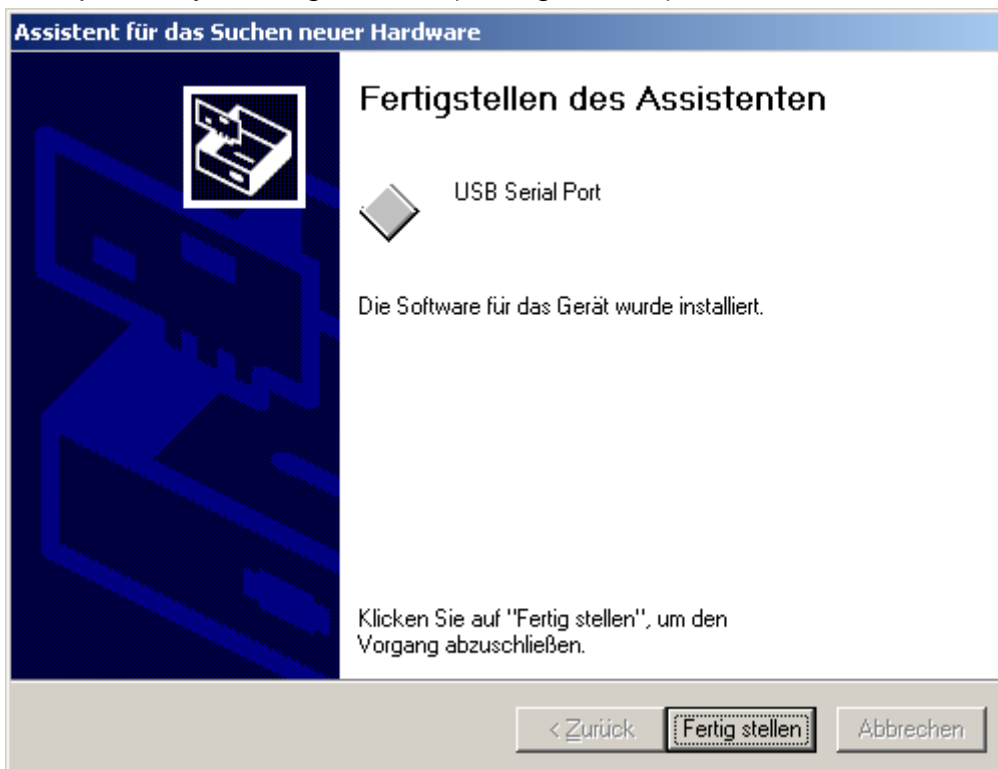
12. Click "Browse" ("*Durchsuchen*") to select the appropriate path and the .INF-file required for the installation. For installation of the virtual COM port, <**USB Serial Port**>, the file "**ftdiport.inf**" must be selected!



13. The drivers found in the specified path are installed by clicking "Next" ("Weiter").



14. After successful installation of the driver for the virtual COM port (*USB Serial Port*), installation of all the components necessary for communication via the USB interface is completed by clicking "Finish" ("Fertig stellen").



Configuring the virtual COM port

If the virtual COM port that has been allocated to the driver during installation is not supported by the programs *Winsol* and *Memory Manager*, the driver can be manually allocated another, still available port. For PCs fitted with an internal modem, it should be noted that normally COM3 is used for the internal modem.

The bootloader or D-LOGGusb must be connected to the PC so that Windows *Device manager* can be used to configure the virtual COM port.

Windows 2000, XP (classical view):

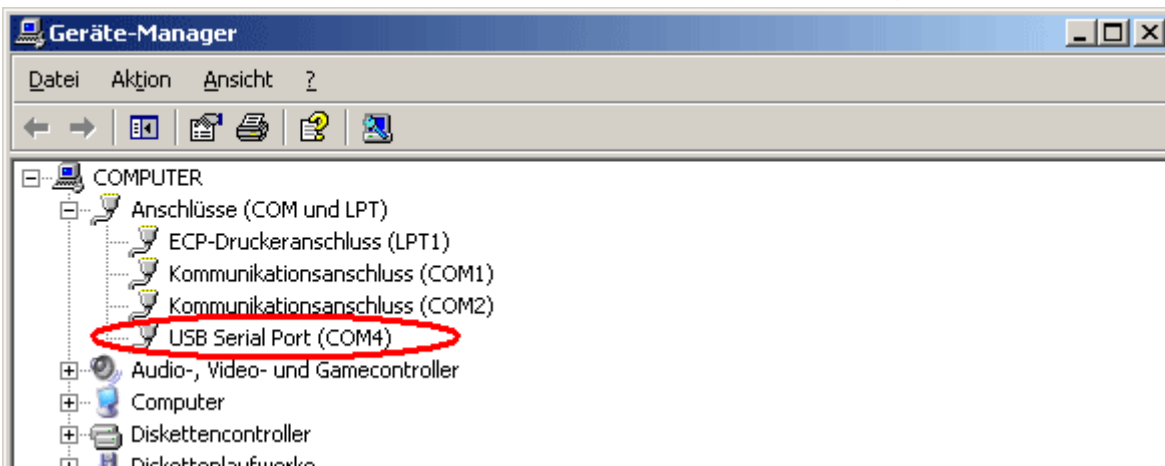
Start ⇒ Settings ⇒ Control panel ⇒ System ⇒ Hardware ⇒ Device Manager ⇒ Ports (COM and LPT)

Windows Vista (classical view):

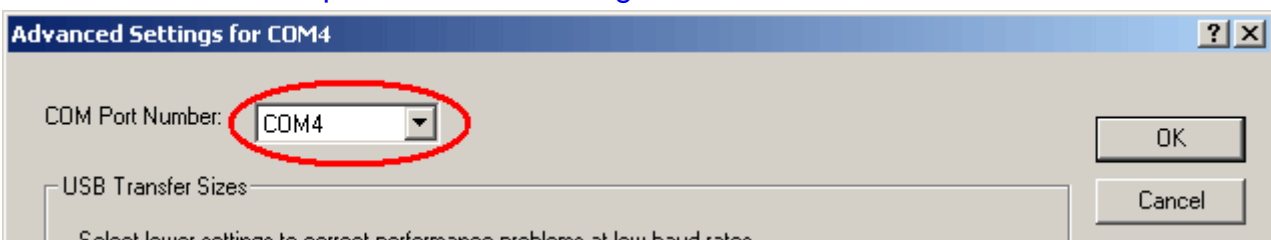
Start ⇒ Settings ⇒ Control panel ⇒ Device Manager ⇒ Ports (COM & LPT)

Windows 7:

Start ⇒ Control panel ⇒ Hardware and Sound ⇒ Device Manager ⇒ Ports (COM and LPT)



In the properties of the <USB Serial Port> the driver can be allocated another COM port:
USB Serial Port ⇒ Properties ⇒ Port Settings ⇒ Advanced...



Uninstalling

The drivers can be removed from Windows within **Device Manger** by right clicking with the mouse and selecting the function "Uninstall" ("Deinstallieren").

So that the drivers are visible in Windows Device Manager, the bootloader or D-LOGGusb must be connected to the PC.

Windows 2000, XP (classical view):

Start ⇒ Settings ⇒ Control panel ⇒ System ⇒ Hardware ⇒ Device Manager

Windows Vista (classical view):

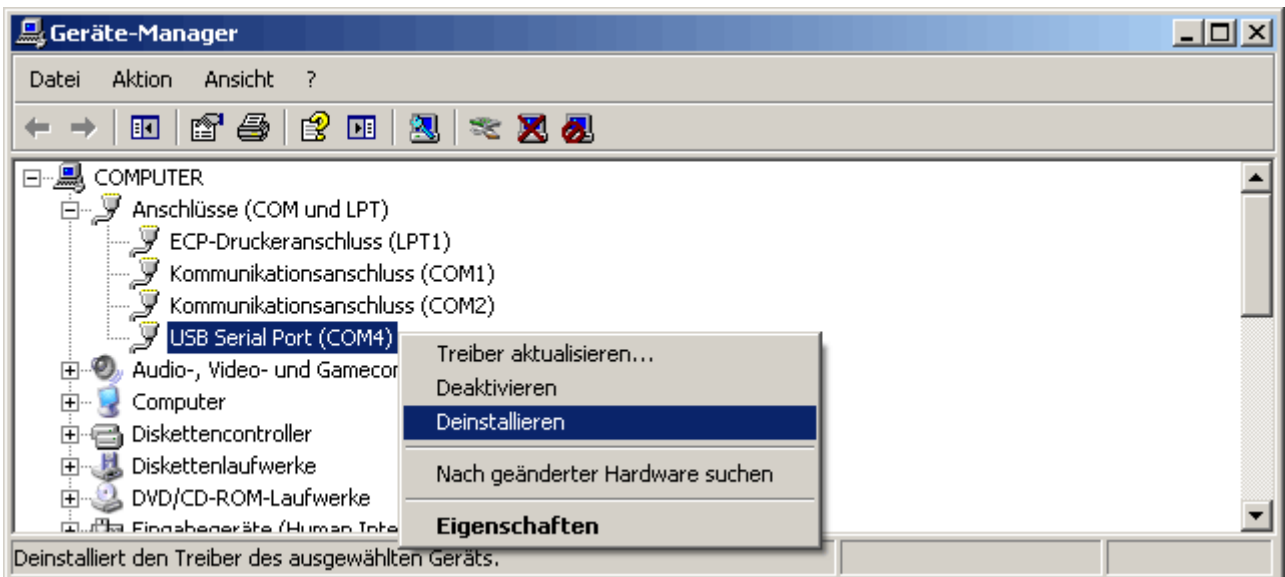
Start ⇒ Settings ⇒ Control panel ⇒ Device Manager

Windows 7:

Start ⇒ Control Panel ⇒ Hardware and sound ⇒ Device Manager

1. First the virtual COM port (**USB Serial Port**) must be uninstalled.

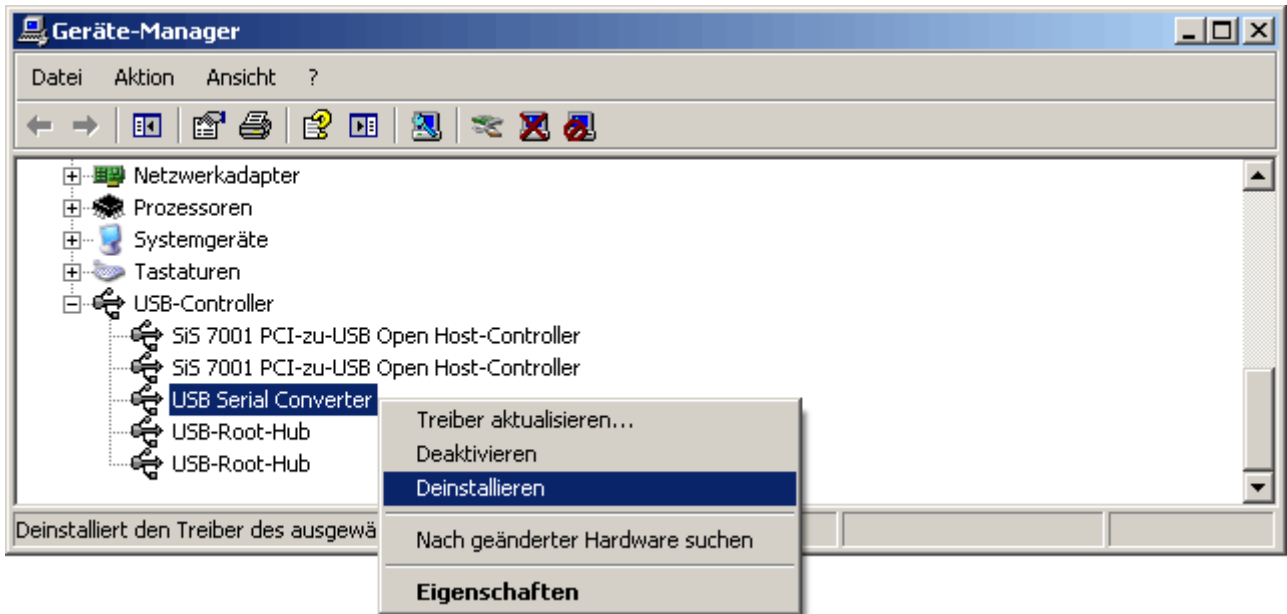
<...⇒ Ports (COM & LPT) ⇒ **USB Serial Port**>



Windows 2000, XP and Server 2003 do not have the selection box for deleting the driver files.

2. The second step is uninstalling the USB controller (**USB Serial Converter**).

<...⇒ Universal Serial Bus controllers ⇒ **USB Serial Converter**>



Windows 2000, XP and Server 2003 do not have the selection box for deleting the driver files.