

RSM610

CONTROL MODULE



Programming: General information

Principles	5
Planning basics	5
Designations	6
User defined designations	6
Programming with TAPPS2	7
Inputs	7
Programming the parameters	7
Sensor type and measured variable	7
Designation	10
Sensor correction	10
Average	10
Sensor check for analogue sensors	11
Sensor error	11
Table of resistance for various sensor types	12
Outputs	13
Programming the parameters	13
Outputs 1/2, 3/4, 5/6, 7/8 and 9/10 as output pair	14
All switching outputs	14
All outputs	15
Outputs 7 to 10 as analogue outputs	15
Outputs 9 (only RSM610-MB and RSM610-24)	16
Designation	17
Overview of outputs	17
Blocking protection	18
M-Bus (only RSM610-MB and RSM610-MB24)	19
Settings	19
M-Bus input	21
General	21
Designation	21
Unit	22
Sensor check	22
Sensor error	22
Fixed values	24
Fixed value type	24
Digital	24
Analogue	25
Pulse	25
Designation	26
CAN bus	27
CAN settings for the RSM610 module	27
Datalogging	28
CAN analogue inputs	30
Node number	30
Designation	30
CAN bus timeout	30
Unit	31
Value at timeout	31
Sensor check	32
Sensor error	32
CAN digital inputs	32
CAN analogue outputs	33
Designation	33
Transmission conditions	33
CAN digital outputs	34
Designation	34
Transmission condition	34
DL bus	35

Table of contents

DL settings	35
DL input	35
DL bus address and DL bus index	35
Designation	36
DL bus timeout	36
Unit	36
Value at timeout	36
Sensor check	37
Sensor error	37
DL digital inputs	37
Bus load of DL sensors	38
DL output	38
System values	39
Device settings	41
General	41
Currency	41
Technician / Expert password	41
Access to menu	41
Time / location	42
CAN bus / DL bus / M-Bus	42
C.M.I. menu	43
Changing set values	43
Creating new elements	44
Date / time / location	45
Value summary	47
Inputs	48
Programming the parameters	49
Sensor type, measured variable and process variable	49
Designation	51
Sensor correction, average, sensor check (for analogue sensors)	51
Outputs	52
Display of outputs status	52
Display of analogue outputs	53
Output meter	54
Deleting meter/counter readings	55
Display of links	55
Fixed values	56
Changing a digital fixed value	56
Changing an analogue fixed value	57
Activating a pulse fixed value	57
General settings	58
Version and serial number	59
Messages	60
User	61
Current user	61
List of permitted actions	62
Data administration	63
C.M.I. menu Data administration	63
Total reset	63
Restart	63
Loading function data or updating firmware via C.M.I.	64
Loading function data or updating firmware via UVR16x2 or CAN-MTx2	65
Reset	67
LED status indicators	67
Technical data RSM610	68

Principles

The RSM610 control module can be used as an extension module for freely programmable UVR16x2 and UVR1611 controllers, or as an independent controller.

The RSM610 is programmed using the TAPPS2 programming software, but can also be programmed via the UVR16x2 or CAN-MTx2.

All the function modules of the UVR16x2 controller are available. Up to 44 functions can be used in a single programming configuration.

The transfer of function data and updating of firmware is carried out via the C.M.I., from the UVR16x2 or CAN-MTx2.

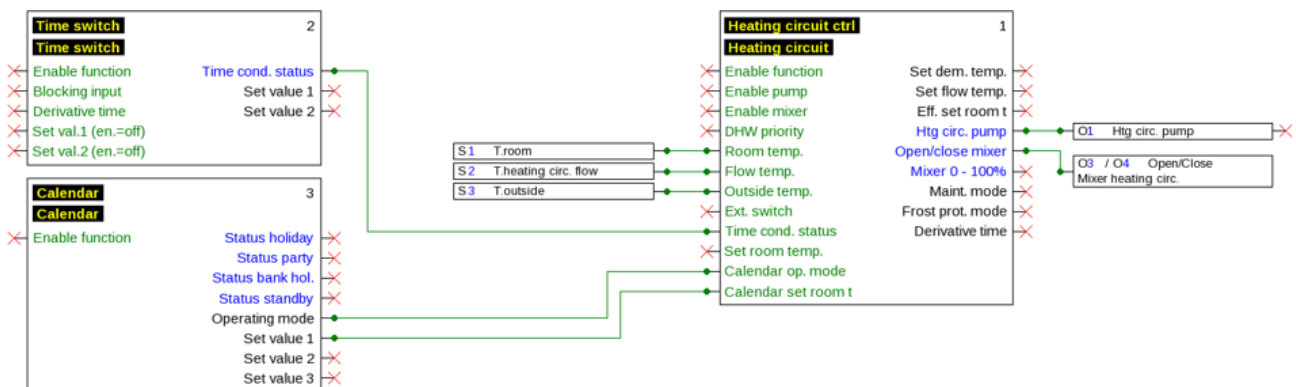
The RSM610 can be operated via a UVR16x2 controller, the CAN-MTx2 CAN monitor or the C.M.I. interface.

A separate firmware version is provided for each language.

This manual is designed as a guide to programming with the **TAPPS 2** programming software, while also providing important information about the elements that can be modified via the C.M.I. or the UVR16x2.

The tools and procedures for TAPPS2 that are required for graphical creation of RSM610 programming are explained in the TAPPS2 manual.

Example with TAPPS2



Planning basics

To ensure efficient programming, the following order must be observed:

1	A prerequisite for programming and defining parameters is an accurate hydraulic scheme .
2	Using that scheme, you must define what should be controlled and how .
3	Based on the required control functions, you must define the sensor positions and draw them on the scheme.
4	In the next step, all sensors and outputs are assigned the required input and output numbers . As all the sensor inputs and outputs have different characteristics, it is not possible to simply number them consecutively. The input and output numbers must therefore be assigned as instructed in this manual.
5	After that, the functions are selected and their parameters are programmed.

Designations

All elements can be designated by selecting a predefined designation from various designation groups or from the user defined designations.

You can also assign a number from 1 to 16 to every designation.

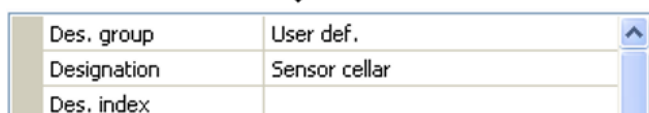
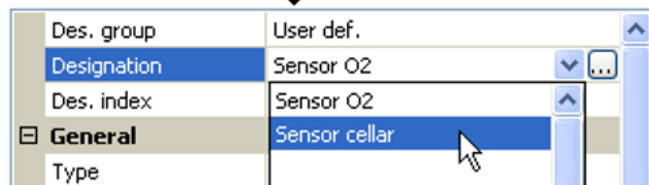
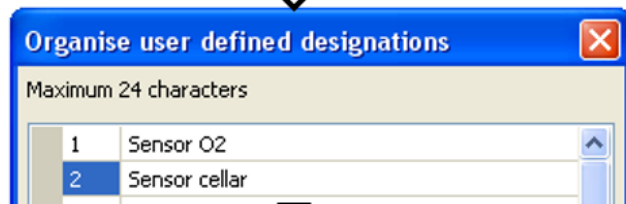
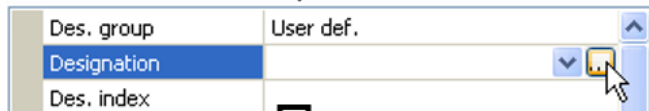
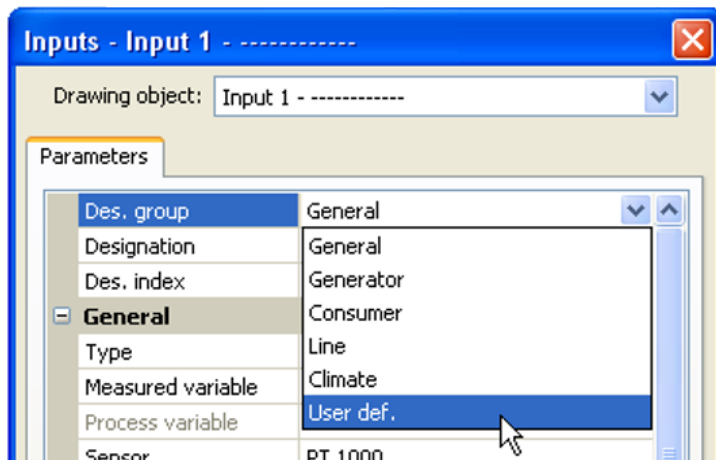
User defined designations

Up to 100 different designations can be defined by the user. The maximum number of characters per designation is **24**.

Designations defined previously are available for all elements (inputs, outputs, functions, fixed values, bus inputs and outputs).

Example:

You want to assign a user defined designation to Input 1.



Click the field for creating the required designation.

Enter the designations, finish with "OK"

Select from the list of previously created user defined designations.

The required designation is displayed

Programming with TAPPS2

The following describes how to program the parameters for all elements using the TAPPS2 programming software.

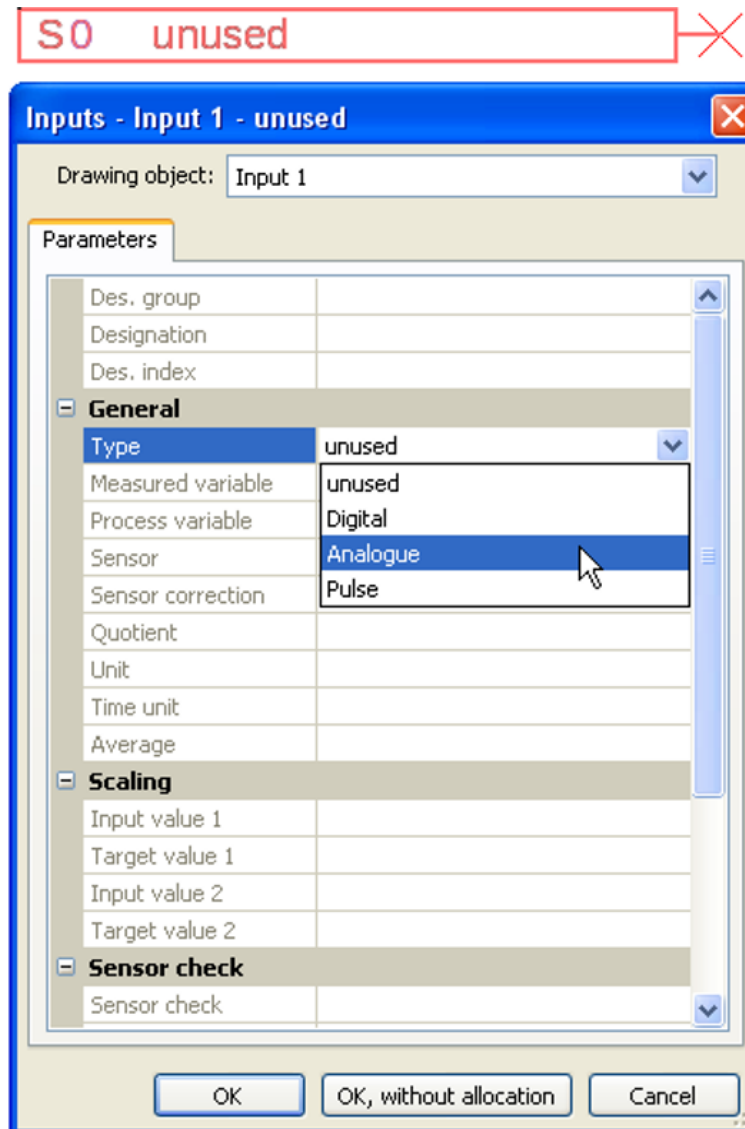
Inputs

The module has **6 inputs** for analogue signals (measurements), digital signals (ON/OFF) or pulses.

Programming the parameters

Sensor type and measured variable

Once the required input is selected, the sensor type can be defined.



3 types of input signal are available:

- **Digital**
- **Analogue**
- **Pulse**

Digital

Select the **measured variable**:

- **Off / On**
- **Off / On (inverse)**
- **No / Yes**
- **No / Yes (inverse)**

Analogue

Select the **measured variable**:

- **Temperature**
Select the sensor type: **KTY (2 k Ω /25°C** = formerly Technische Alternative's standard type), **PT 1000** (= current standard type), room sensors: **RAS, RASPT, THEL** thermocouple, **KTY (1 k Ω /25°C), PT 100, PT 500, Ni1000, Ni1000 TK5000**
- **Solar radiation** (sensor type: **GBS01**)
- **Voltage** (inputs 1-3 and 6: max. 3.3 V, inputs 4 and 5: max. 10V)
- **Resistance**
- **Humidity** (sensor type: **RFS**)
- **Rain** (sensor type: **RES**)

Also select the **process variable** for the measured variables **Voltage** and **Resistance**:

- **dimensionless**
- **dimensionless (.1)**
- **Performance factor**
- **dimensionless (.5)**
- **Temperature °C**
- **Global radiation**
- **CO₂ content ppm**
- **Percent**
- **Absolute humidity**
- **Pressure bar, mbar, Pascal**
- **Litre**
- **Cubic metre**
- **Flow rate (l/min, l/h, l/d, m³/min, m³/h, m³/d)**
- **Output**
- **Voltage**
- **Amperage mA**
- **Amperage A**
- **Resistance**
- **Speed km/h**
- **Speed m/s**
- **Degree (angle)**

Then you must use scaling to define the value range.

Example Voltage/Global radiation:

Scaling	
Input value 1	0,00 V
Target value 1	0 W/m ²
Input value 2	3,00 V
Target value 2	1500 W/m ²

0.00 V equates to 0 W/m², 3.00 V yields 1500 W/m².

Pulse input

Input **6** can capture pulses of **max. 20 Hz** and at least **25 ms** pulse duration (**50** pulses).
Inputs **1 – 5** can capture pulses with **max. 10 Hz** and a pulse duration of at least **50 ms**.

Select the measured variable

General	
Type	Pulse
Measured variable	Wind speed ▼
Process variable	Wind speed
Sensor	Flow rate
Sensor correction	Pulse
Quotient	User defined

Wind speed

A quotient must be entered for the "**Wind speed**" measured variable. This is the signal frequency at **1 km/h**.

Example: The **WIS01** wind sensor issues one pulse (=1 Hz) per second at a wind speed of 20 km/h. Therefore, the frequency at 1 km/h equals 0.05 Hz.

Quotient	0,05 Hz
----------	---------

Setting range: 0.01 – 1.00 Hz

Flow rate

A quotient must be entered for the "**Flow rate**" measured variable. This is the flow rate in litres per pulse.

Quotient	0,5 l/imp
----------	-----------

Setting range: 0.1 – 100.0 l/pulse

Pulse

This measured variable is used as the input variable for the "**Meter/Counter**" function, as a pulse counter with "Pulses" as its unit.

User defined

For the "**User defined**" measured variable, both the quotient **and** the unit must be entered.

Quotient	0,50000 l/imp
Unit	l
Time unit	/h

Setting range for quotient: 0.00001 – 1000.00000 units/pulse (5 decimal places)

Units: l, kW, km, m, mm, m³.

For l, mm and m³ the unit of time must be selected as well. For km and m the units of time are pre-defined and cannot be changed.

Example: For the "Energy meter" function, the unit "kW" can be used. In the example above, 0.00125 kWh/pulse was selected, which equates to 800 pulses /kWh.

Quotient	0,00125 kWh/imp
Unit	kW
Time unit	

Designation

Enter the input designation by selecting a predefined designation from various designation groups or from the user defined designations.

Sensor type Analogue / Temperature:

- **General**
- **Generator**
- **Consumer**
- **Line**
- **Climate**
- **User** (user defined designations)

You can also assign a number from 1 to 16 to every designation.

Sensor correction

The option of sensor correction is available for the measured variables Temperature, Solar radiation, Humidity and Rain. The corrected value is utilised for all calculations and displays.

Example: Pt1000 temperature sensor

General	
Type	Analogue
Measured variable	Temperature
Process variable	
Sensor	PT 1000
Sensor correction	0,2 K

Average

Average	1,0 sec
---------	---------

This setting refers to the average of the measurements **over time**.

Averaging over 0.3 seconds leads to extremely rapid reactions on the part of the display and the unit. However, this can be expected to cause fluctuations of the value.

A large average value leads to inertia and is only recommended for sensors for the heat meter.

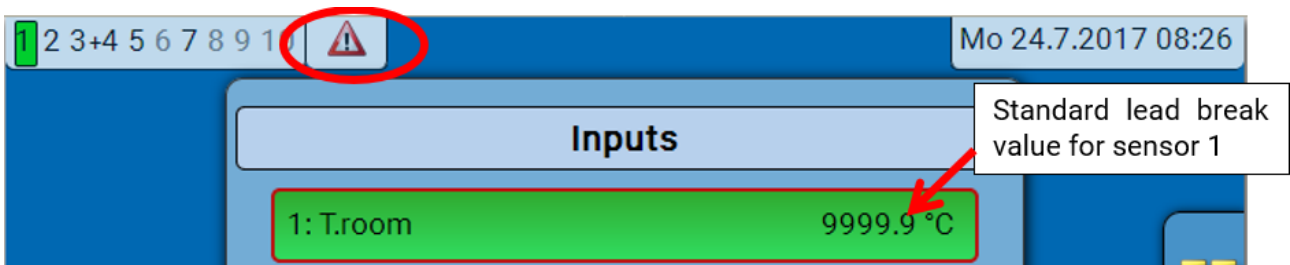
For simple measuring tasks, around 1 - 3 seconds should be selected. For hygienic domestic hot water heating with the ultra-fast sensor, 0.3 - 0.5 seconds should be selected.

Sensor check for analogue sensors

☐ Sensor check	
Sensor check	Yes
☐ Short circuit threshold	
Threshold value	
☐ Short circuit value	
Output value	
☐ Lead break threshold	
Threshold value	
☐ Lead break value	
Output value	

If "**Sensor check**" is active (setting: "**Yes**"), a short circuit or a lead break will **automatically** generate an error message: A **warning symbol** is displayed in the upper status line, and the faulty sensor is shown with a red border around it in the "**Inputs**" menu.

Example:



Sensor error

When "**Sensor check**" is active, **Sensor error** is available as an input variable for functions: status "**No**" for a sensor that is working correctly and "**Yes**" for a defect (short circuit or lead break). This allows the controller to react to the failure of a sensor, for example.

In System values / General, a sensor error for **all** inputs is available.

If the **Standard** thresholds are selected, a short circuit will be indicated if the value falls below the lower **measurement limit** and a lead break will be indicated if the value exceeds the upper **measurement limit**.

The **Standard** values for temperature sensors are -9999.9 °C for a short circuit and 9999.9 °C for a lead break. Those values are utilized in the internal calculations in the event of an error.

By selecting the thresholds and values appropriately, a fixed value can be specified for the controller in the event of sensor failure, in order to allow a function to continue operating in emergency mode.

Example: If the temperature value falls below the threshold of 0 °C (= "Threshold value"), a value of 0.0 °C (= "Output value") is issued and displayed for that sensor (fixed hysteresis: 1.0 °C). At the same time the "Sensor error" status is set to "**Yes**".

☐ Sensor check	
Sensor check	Yes
☐ Short circuit threshold	
Threshold value	0,0 °C
☐ Short circuit value	
Output value	20,0 °C



If the sensor falls below 0 °C, 20 °C will consequently be displayed as the measurement value, and at the same time a sensor error will be displayed (with a red border).

The short circuit threshold must be defined below the lead break threshold.

In the case of **voltage measurements** on inputs 1-3 and 6 (max. 3,3V), note that the internal resistance of the **voltage source** must not exceed 100 ohms otherwise the accuracy will be less than that specified in the technical data.

Voltage measurements on inputs 4 and 5: The controller's input impedance is 30 kΩ. Make sure that the voltage never exceeds 10.5 V as this would have an extremely negative effect on the other inputs.

Resistance measurement: If the process variable is set to "Dimensionless", measurement is only possible up to 30 kΩ. If the process variable is set to "Resistance" and the resistances being measured are >15 kΩ, the averaging time should be increased as the values will fluctuate slightly.

Table of resistance for various sensor types

Temp.		0	10	20	25	30	40	50	60	70	80	90	100
PT1000	[Ω]	1000	1039	1078	1097	1117	1115	1194	1232	1271	1309	1347	1385
KTY (2kΩ)	[Ω]	1630	1772	1922	2000	2080	2245	2417	2597	2785	2980	3182	3392
KTY (1kΩ)	[Ω]	815	886	961	1000	1040	1122	1209	1299	1392	1490	1591	1696
PT100	[Ω]	100	104	108	110	112	116	119	123	127	131	135	139
PT500	[Ω]	500	520	539	549	558	578	597	616	635	654	674	693
Ni1000	[Ω]	1000	1056	1112	1141	1171	1230	1291	1353	1417	1483	1549	1618
Ni1000 TK5000	[Ω]	1000	1045	1091	1114	1138	1186	1235	1285	1337	1390	1444	1500

The standard type used by Technische Alternative is **PT1000**.

PT100, PT500: As these sensors are more susceptible to external interference, their sensor leads must be **screened** and the **Average time** should be increased. Nevertheless the accuracy specified in the technical data for PT1000 sensors **cannot be guaranteed**.

NTC sensors

Sensor	NTC
Sensor correction	0,0 K
R25	10,00 kΩ
Beta	3800

For evaluation of NTC sensors, the R25 value and the beta value must be specified.

The nominal resistance R25 is always based on 25 °C.

The beta value refers to the characteristic of

an NTC sensor in relation to 2 resistance values.

Beta is a material constant and can be calculated from the manufacturer's resistance table using the following formula:

$$B = \frac{\ln \frac{R1_{(NT)}}{R2_{(HT)}}}{\frac{1}{T1_{(NT)}} - \frac{1}{T2_{(HT)}}}$$

As the beta value is not a constant over the total temperature curve, the anticipated limits of the measuring range must be determined (e.g. for a cylinder sensor from +10 °C to +100 °C or for an outside sensor from -20 °C to +40 °C).

All temperatures in the formula must be given as **absolute temperatures in K** (Kelvin) (e.g. +20 °C = 273.15 K + 20 K = 293.15 K)

- In Natural logarithm
- R1_(NT) Resistance at the minimum temperature of the temperature range
- R2_(HT) Resistance at the maximum temperature of the temperature range
- T1_(NT) Minimum temperature of the temperature range
- T2_(HAT) Maximum temperature of the temperature range

Outputs

The controller has **10 outputs**.

The following different output types exist, although they are not available for selection for all outputs:

- **Switching output**
- **Output pair**
- **0 - 10 V**
- **PWM**

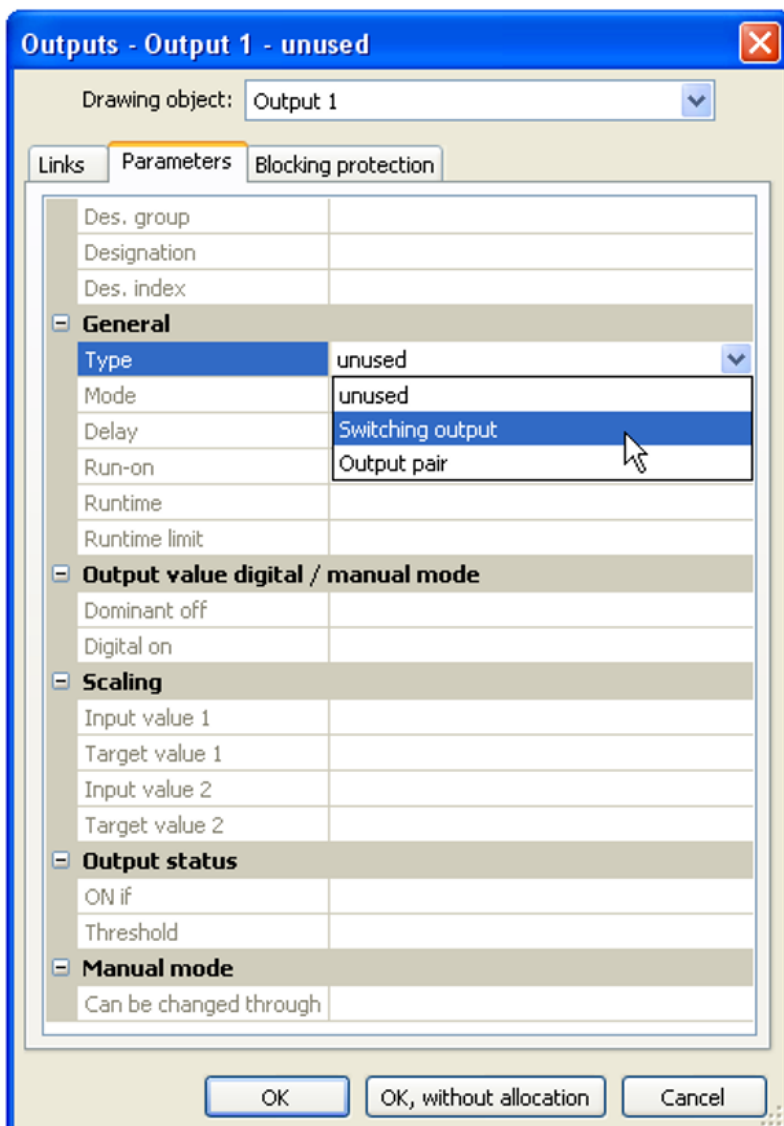
Outputs 1 to 6 can only be programmed as switching outputs or as output pairs.

Outputs 7 to 10 are primarily intended as 0-10 V or PWM outputs for speed control of pumps or modulation of heat generators. However, with the aid of additional auxiliary relays (e.g. HIREL16x2), these outputs can also be used as switching outputs or output pairs.

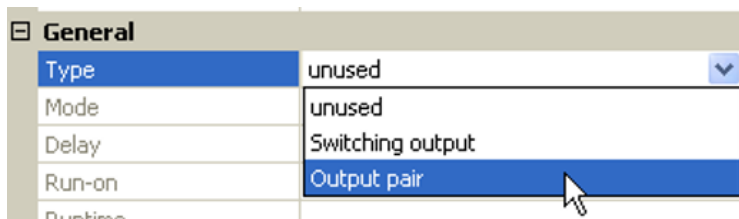
In modules RSM610-24 and RSM610-MB24, **output 7** serves as a power supply for 24 V devices. In modules RSM610-MB and RSM610-MB24, **output 9** serves as the M-Bus input for up to 4 M-Bus meters.

Programming the parameters

Once the required output is selected, the output type can be defined.



Outputs 1/2, 3/4, 5/6, 7/8 and 9/10 as output pair



These outputs can be used as single switching outputs or as an **output pair** together with the following **switching output** (e.g. to control a mixer drive).

The output pairs **7/8** and **9/10** require the use of auxiliary relays (relay modules).

Runtime

General	
Type	Output pair
Mode	
Delay	
Run-on	
Runtime	02:30 [mm:ss]
Runtime limit	Yes

The mixer runtime must be entered for every **output pair**.

If a mixer runtime of 0 is entered, the output pair will not be utilised.

Runtime limit

When the runtime limit is **active**, output pair control is terminated if the remaining runtime of 20 minutes has counted down to 0. The remaining runtime is reloaded if the output pair is switched to manual mode, is switched by a message (to dominant ON or OFF), changes its direction of control, or if enabling is switched from OFF to ON.

If the runtime limit is **deactivated**, the remaining runtime only counts down to 10 seconds and output pair control is not terminated.

Output pairs are shown in the status line with a "+" symbol between the output numbers.

Example: Outputs **3+4** have been programmed as output pair



If two different functions act on the two outputs in the output pair simultaneously, the output with the lower number ("OPEN" command) will be activated.

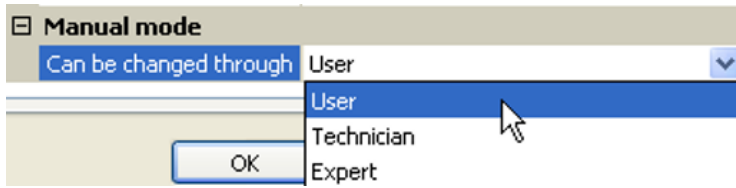
Exception: the **"Message"** function – if the simultaneous command comes from this function, the output with the higher number ("CLOSE" command) will be activated.

All switching outputs

General	
Type	Switching output
Mode	
Delay	00:00 [mm:ss]
Run-on	00:00 [mm:ss]
Runtime	

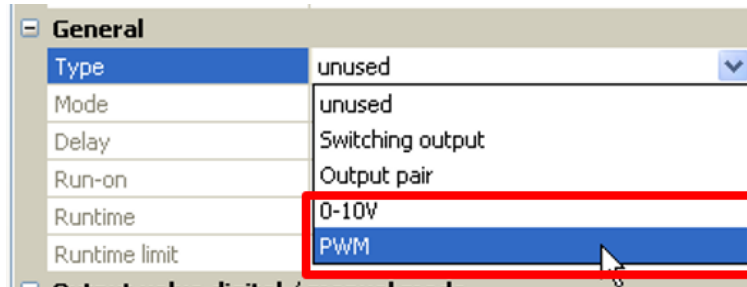
A start delay and a run-on time can be defined for all **switching** outputs.

All outputs



Manual mode can be restricted to certain **user groups** (User, Technician, Expert) for all outputs.

Outputs 7 to 10 as analogue outputs



These outputs provide a voltage between 0 and 10 V, e.g. for output-dependent control of burners (burner modulation) or speed control of electronic pumps.

The output can be issued either as a voltage (**0 – 10 V**) or as a **PWM** signal.

If **output 7** is programmed as a switching output, 0-10 V output or PWM output in the RSM610-24 or RSM610-MB24 modules, this has no effect on this output. It constantly emits 24 V.

Output 9 cannot be programmed as a switching output, 0-10 V output or PWM output in the RSM610-MB or RSM610-MB24 modules.

They can be controlled by the PID function, or by other functions. The "**Scaling**" provides the option of matching the **analogue value** of the source (with or without decimal place) to the control range of the device being controlled.

In **PWM** (pulse width modulation) mode, a square wave signal is created with a voltage level of about **10 V** and a frequency of **1 kHz** with a variable duty factor (0 - 100 %).

If multiple functions (analogue values) act simultaneously on one analogue output, the higher value is output.

For cases where an analogue output is activated by a **digital command**, an output voltage of 0.00 V and 10.00 V (or 0.0 % – 100.0 % for PWM) can be defined. Digital commands are **dominant** over links with an analogue value.

The activation of the analogue output via "**Dominant off**" and "**Digital on**" is possible by means of the following digital signals:

Output value digital / manual mode	
Dominant off	5,00 V
Digital on	10,00 V
Example: Dominant off: Output value 5.00 V	Example: Digital on: Output value 10.00 V
Dominant off (from messages)	Dominant on (from messages)
Manual Off	Manual On
	Digital on
	Anti-blocking protection

Output status of the analogue outputs

Output status	
ON if	Act. > threshold
Threshold	Act. > threshold
Manual mode	
	Act. < threshold

For the **output status** you can define whether the **ON** status should be issued above or below an adjustable **threshold**.

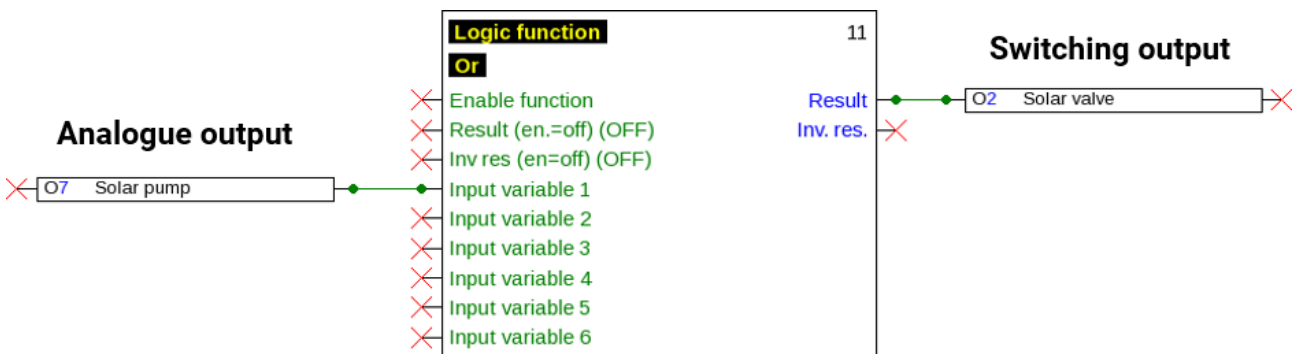
Example: If the analogue output is over 3.00 V, the output status switches from OFF to ON.

Output status	
ON if	Act. > threshold
Threshold	3,00 V

Depending on the technical attributes of the pump being controlled, it may thus be possible to set the output status to be ON only when the pump is actually running.

If you want an analogue output (A7 – A10) to be switched **together with** a switching output, it can only be done by means of appropriate programming.

Example: As soon as the output status of the analogue output switches to ON, that ON command is forwarded to the switching output via the logic function.



Examples of different scalings

Scaling	
Input value 1	0
Target value 1	0,00 V
Input value 2	100
Target value 2	10,00 V

Correcting variable of PID function: Mode 0-10 V, correcting variable 0 should correspond to 0 V, correcting variable 100 should correspond to 10 V:

Scaling	
Input value 1	0
Target value 1	0,0 %
Input value 2	1000
Target value 2	100,0 %

Temperature value, e.g. from an analogue function: Mode PWM, the temperature 0 °C should correspond to 0 %, 100.0 °C should correspond to 100 %:

The temperature is transferred in 1/10 °C **without the decimal point**.

Scaling	
Input value 1	0
Target value 1	0,00 V
Input value 2	1000
Target value 2	10,00 V

Burner output, e.g. from the functions DHW demand or Maintenance: Mode 0-10 V, burner output of 0.0 % should correspond to 0 V, 100.0 % should correspond to 10 V:

The percentage is transferred in 1/10 % **without the decimal point**.

Outputs 9 (only RSM610-MB and RSM610-24)

In these modules, output 9 acts as an M-Bus input and is therefore always shown as "unused".

Designation

Enter the output designation by selecting a predefined designation from various designation groups or from the user defined designations.

- **General**
- **Climate**
- **User** (user defined designations)

You can also assign a number from 1 to 16 to every designation.

Overview of outputs

	Switching output N/O relay	Switching output N/O + N/C relay	Switching output Potential-free N/O + N/C relay	Output pair for mixer, etc.	0-10V or PWM
Output 1	x			x	
2	x			x	
3	x			x	
4	x			x	
5	x			x	
6		x	x	x	
7	x ¹			x ¹	x
8	x ¹			x ¹	x
9	x ¹			x ¹	x
10	x ¹			x ¹	x

¹ Switching outputs 7-10 or output pairs are only possible with **additional relay**

Output 6 can be made potential-free by removing a jumper.

In the RSM610-**24** and RSM610-**MB24** modules, output **A7** can only be used as a **24 V** power supply.

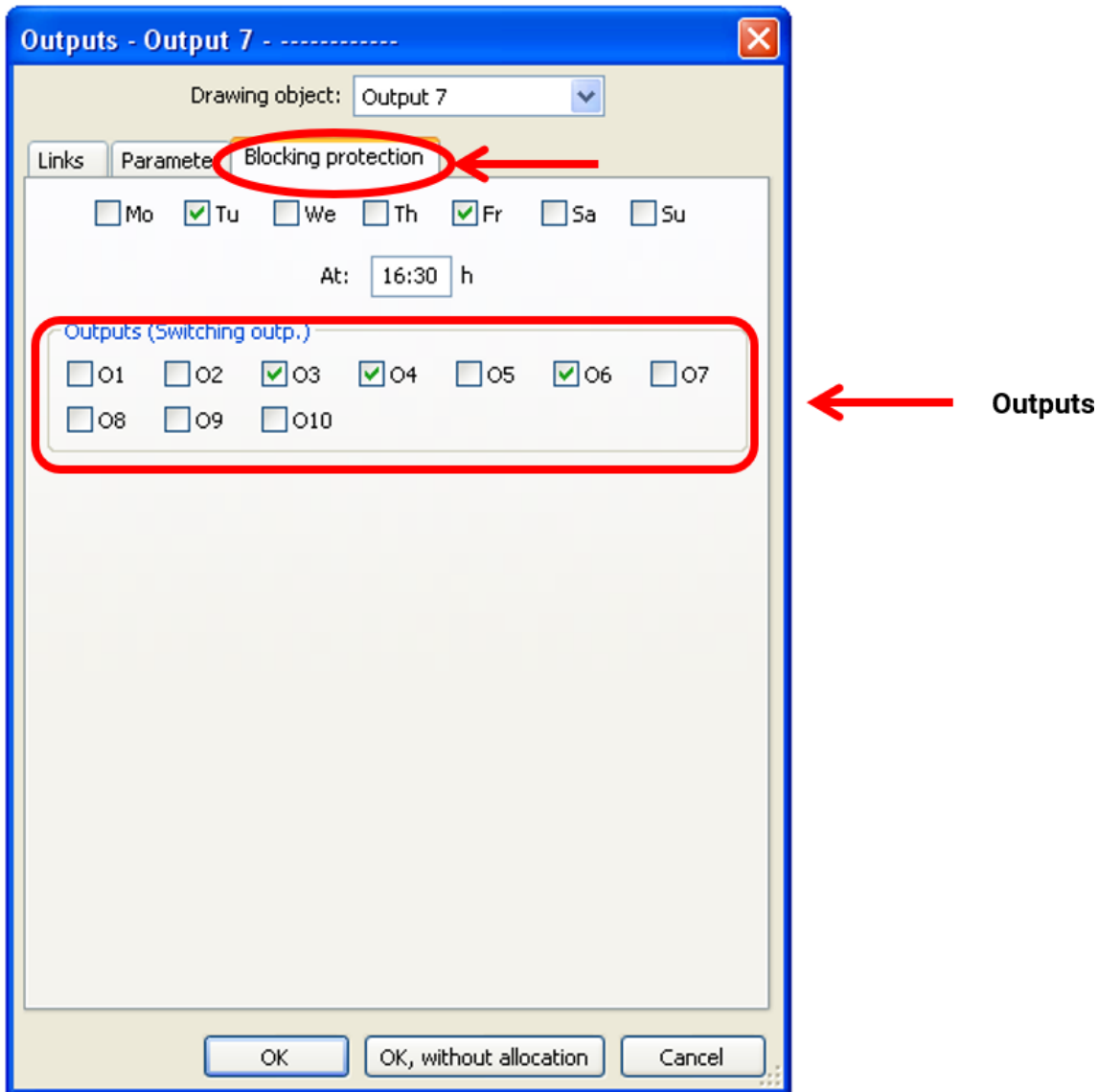
In the RSM610-**MB** and RSM610-**MB24** modules, output **A9** can only be used as an **M-Bus** input.

Blocking protection

Circulating pumps which do not run for a long period (e.g. heating circuit pump during the summer) often encounter start-up problems as a result of corrosion. This problem can be avoided by starting the pump periodically for 30 seconds.

The **blocking protection** for all outputs can be defined in every output menu. You can specify a time and all the outputs that are to receive blocking protection.

Example:



In this example, the pumps 3, 4 and 6 will be run for 30 seconds on Tuesday and Friday at 16:30 h if the output has not been active since the module was started or since blocking protection was last initiated.

The module does not switch on all the outputs at the same time, but instead begins with one output, switches after 30 seconds to the next, and so on.

M-Bus (only RSM610-MB and RSM610-MB24)

The M-Bus is a master/slave system for reading data from energy and volume meters (electricity, heat, water, gas).

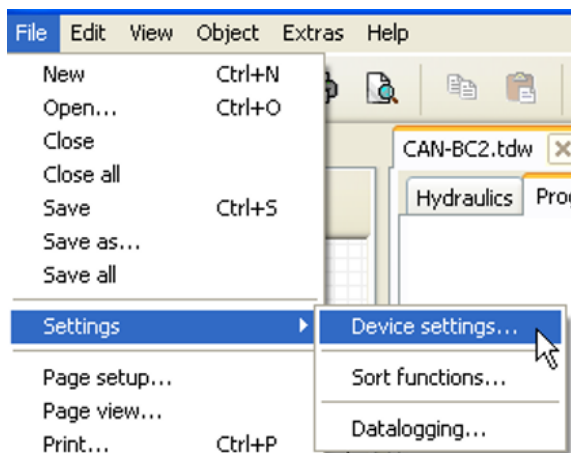
The M-Bus input is designed for up to 4 M-Bus "unit loads". Up to 4 M-Bus meters, each with 1 unit load, can therefore be connected. The module (master) cyclically reads the values from the individual devices. The interval time is adjustable.

As a master, this module is therefore suitable for the parallel connection of up to four M-Bus meters (slaves).

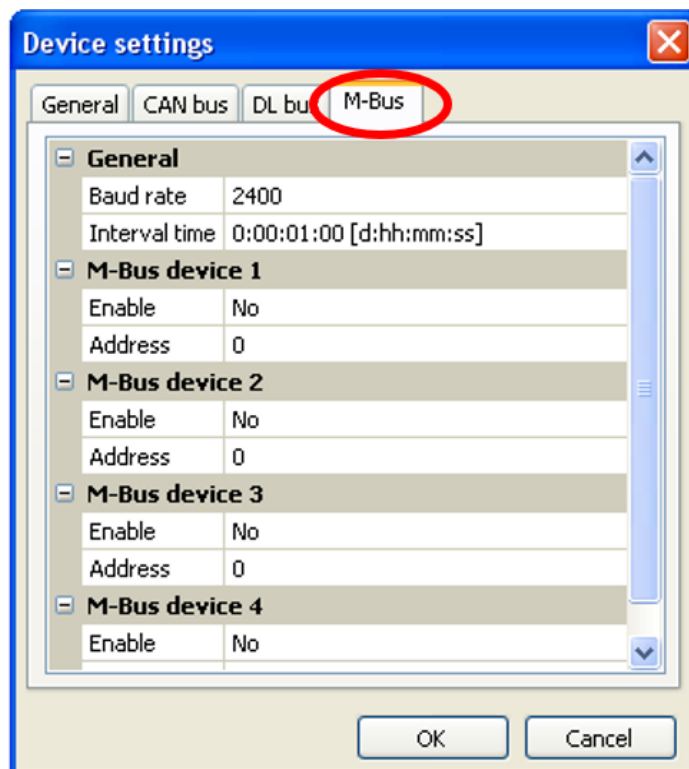
In total, a maximum of 32 M-Bus values can be read per module. There must only be one master in the M-bus system.

This menu contains all the information and settings needed to set up an M-Bus network.

Settings



In the Device settings / M-Bus menu, the general settings for the M-Bus and the addresses of the M-Bus devices are defined.



Baud rate

The standard baud rate of the M-Bus devices is 2400 Bd. The factory setting does therefore not usually need changing.

Interval time

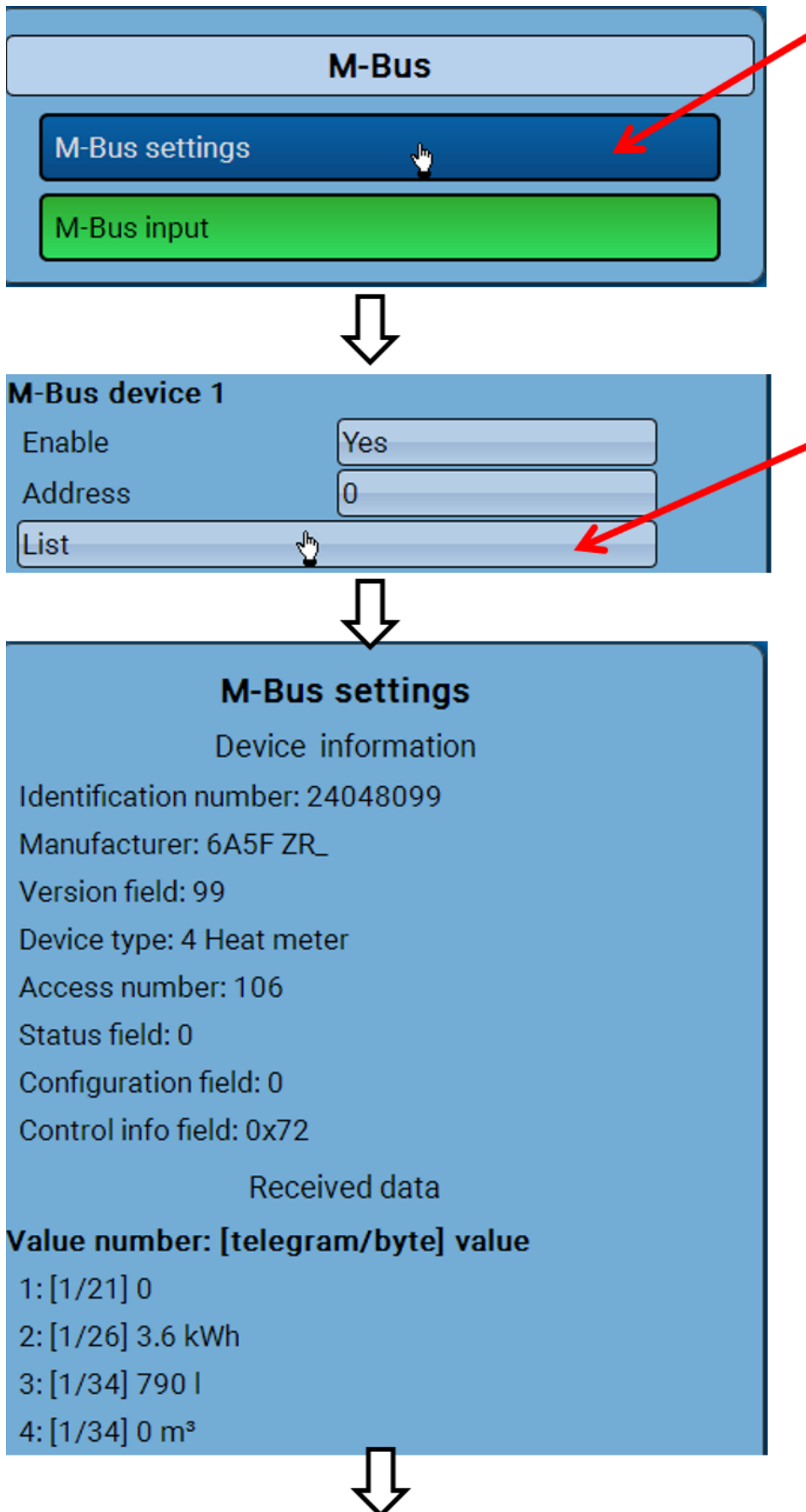
The readout intervals can be adjusted from 30 seconds to 2 days. Longer intervals use up less battery life in battery operated M-Bus meters.

M-Bus device 1-4

For every connected M-Bus device, enabling must be set to "Yes" and the slave **address** must be entered (between 0 and 250).

For a **connected** M-Bus device, device information and data received can be **read** by pressing the **"List"** button.

Example: C.M.I. view for a connected M-Bus meter



After 255 access attempts, the access number is reset to 0.

Device information

Information about the device and manufacturer is shown at the top.

Received data

Up to 128 values per meter can be shown here. The order is defined according to the telegram address and the **start byte**. In addition, the value read is shown with the unit.

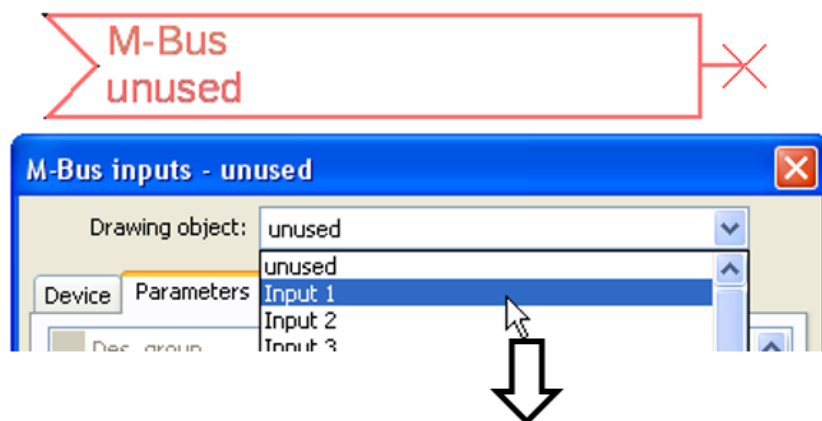
Example: Value 2 comes from telegram address 1 and start byte 26. Values 3 and 4 both relate to byte 34, but with different units.

The manuals issued by the M-Bus device manufacturers contain more details about the values.

M-Bus input

Up to 32 M-Bus inputs can be programmed.

Example: Programming the parameters of M-Bus input 1



Available for selection Analogue or digital

In most cases, analogue (numeric) values are applied.

General	
Type	Analogue
Device	1
Value number	1
Divisor	1
Factor	1

General

Device: Entry of the **device number** as per the device settings (1-4)

Value number: Entry of the value number from the "List" of device information read (C.M.I. menu **M-Bus settings**)

Divisor / factor: Entry of a divisor or factor to adjust the value read to the actual quantity (e.g. correct positioning of the decimal point).

Designation

Every M-Bus input can be given its own designation. The designation can be selected from various designation groups or can be user defined. In addition, up to 16 index numbers can be issued.

Example:

Parameters	
Des. group	Temperature actual value
Designation	T.boiler flow
Des. index	1

Unit

If the measured variable is set to "**Automatic**", the unit of measurement specified by the M-Bus device will be applied in the module.

Unit	
Measured variable	Automatic

If you select "**User def.**", you can select a **unit** of your own, a **sensor correction** and, if the **sensor check** is set to active, a monitoring function.

Unit	
Measured variable	User def.
Unit	Temperature °C
Sensor correction	0,0 K
Value at timeout	Unchanged

Every M-Bus input is assigned a **unit**, which can differ from the unit used by the M-Bus device. A wide range of units is available to choose from.

Sensor correction

The value of the M-Bus input can be corrected by applying a fixed differential value.

Value at timeout

This setting is only displayed if the measured variable is set to "**User def.**". This application is **not** yet available.

Sensor check

If you set the sensor check to "**Yes**", the **sensor error** of the M-Bus value is available as a digital input variable for a function.

This application is only useful if user defined threshold and output values are specified for the sensor error.

Sensor check	
Sensor check	Yes

Sensor error

This setting is only displayed if the measured variable is set to "**User def.**" and the **sensor check is active**.

Sensor error: Status "**No**" for a correct value **within** the threshold values and "**Yes**" for a value **outside** the thresholds. This allows the controller to react to the failure of an M-Bus device, for example.

Sensor check	
Sensor check	Yes
Short circuit threshold	Standard
Threshold value	
Short circuit value	Standard
Output value	
Lead break threshold	Standard
Threshold value	
Lead break value	Standard
Output value	

In order to make good use of the sensor check, the short circuit and lead break thresholds should be changed from "Standard" to "**User defined**" and the required threshold values defined. The required short circuit and lead break values will subsequently also be defined by the user.

If the measurement read is **below** the defined **short circuit threshold** or **exceeds** the **lead break threshold**, the relevant **output values** will be applied instead of the measurement.

By selecting suitable thresholds and output values, a fixed value can be specified for the module in the event of a measurement failure, to allow a function to continue operating in emergency mode (fixed hysteresis: 10 or 1.0 °C).

The short circuit threshold must be defined below the lead break threshold.

Example: Temperature

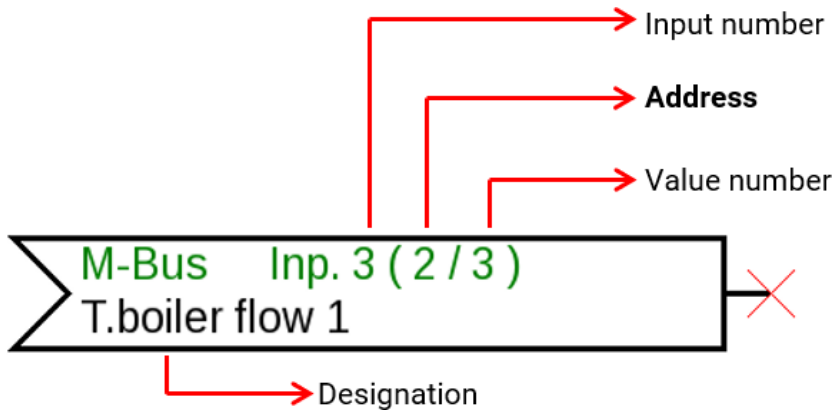
Sensor check	
Sensor check	Yes
Short circuit threshold	Standard
Threshold value	Standard
Short circuit value	User def.
Output value	



Sensor check	
Sensor check	Yes
Short circuit threshold	User def.
Threshold value	10,0 °C
Short circuit value	User def.
Output value	50,0 °C
Lead break threshold	User def.
Threshold value	100,0 °C
Lead break value	User def.
Output value	70,0 °C

If the measurement is below 10 °C, 50 °C will be issued; if it exceeds 100 °C, 70 °C will be issued.

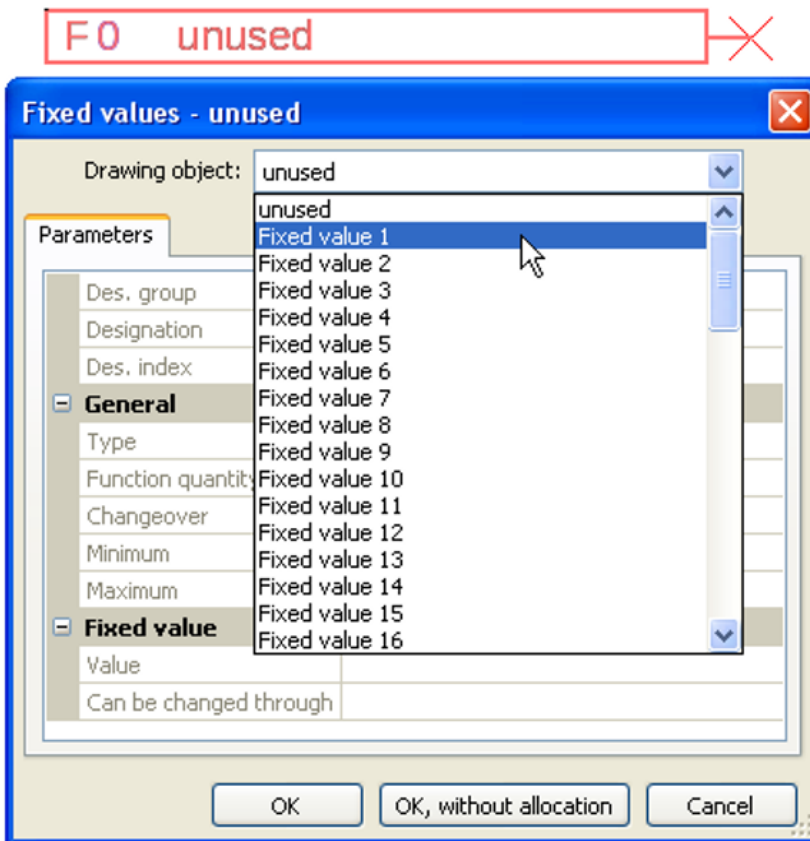
Once the parameter entries have been completed by pressing **OK**, the M-Bus input in **TAPPS2** will look like this:



Fixed values

In this menu you can define up to **64 fixed values**, which can be used as input variables for functions, for example.

Example:



Fixed value type

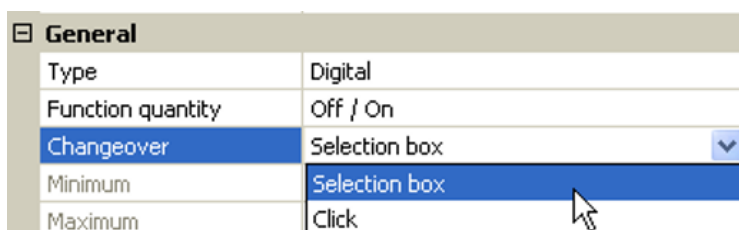
Once the required fixed value is selected, the fixed value type can be defined.

- **Digital**
- **Analogue**
- **Pulse**

Digital

Select the **measured variable**:

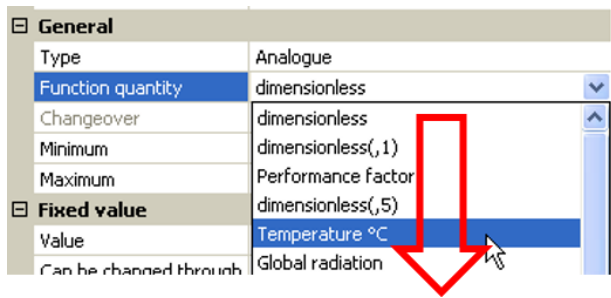
- **Off / On**
- **No / Yes**



Select whether the status can be changed via a selection box or simply by a click.

Analogue

Select from a wide range of units and dimensions



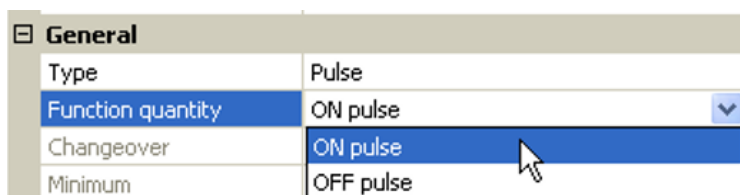
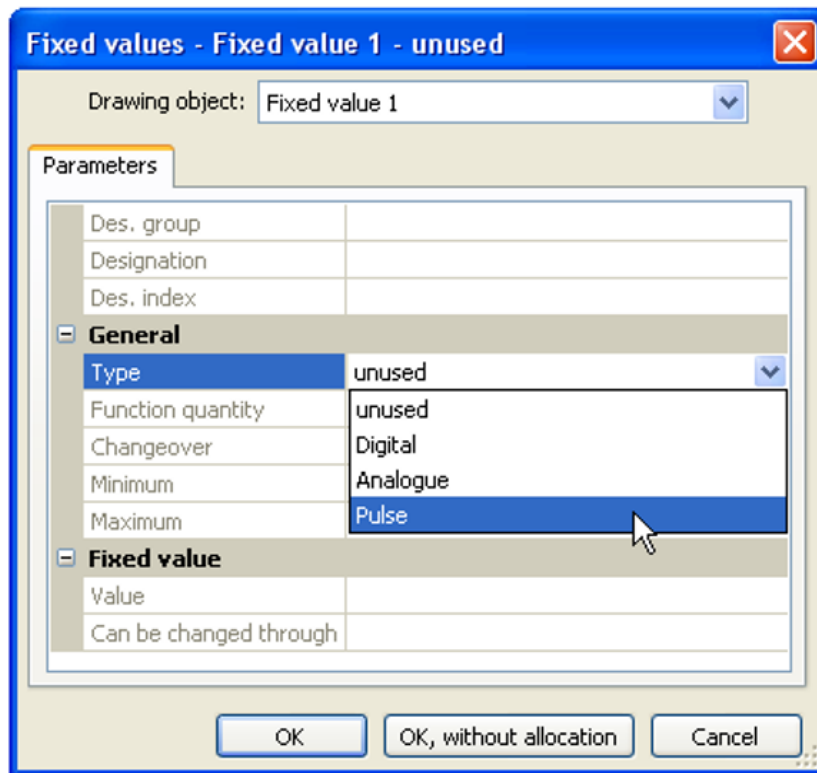
Minimum	50,0 °C
Maximum	65,0 °C
Fixed value	
Value	55,0 °C

After assigning the **designation**, you must define the permitted limits and the current fixed value. The value can be adjusted in the menu within those limits.

Pulse

A fixed value of this type allows short **pulses** to be generated by tapping it in the menu.

Example:



Select the **function quantity**: When activated, either an ON pulse (from OFF to ON) or an OFF pulse (from ON to OFF) will be generated, depending on the selection made here.

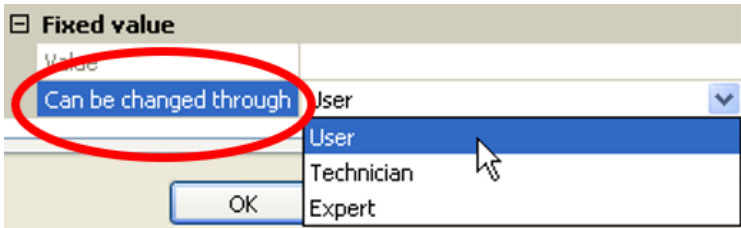
Designation

Enter the fixed value designation by selecting a predefined designation or one of the user defined designations.

You can also assign a number from 1 to 16 to every designation.

Restriction of change authority

For **all** fixed values, you can set the user level from which the fixed value can be changed:



CAN bus

The CAN network allows communication between CAN bus devices. When analogue or digital values are sent via CAN **outputs**, other CAN bus devices can utilise those values as CAN **inputs**.

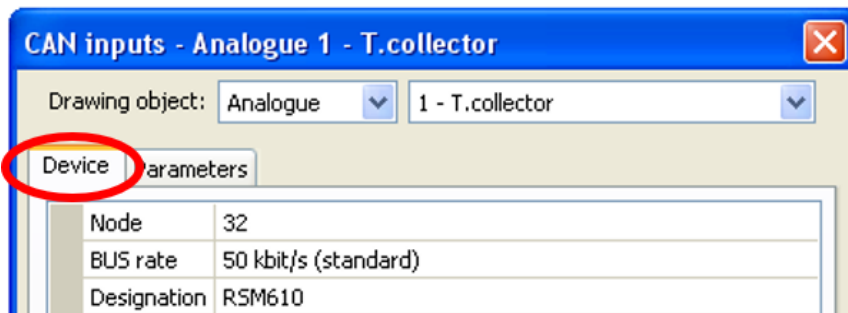
Up to 62 CAN bus devices can be operated in one network.

Every CAN bus device must be given its own node number in the network.

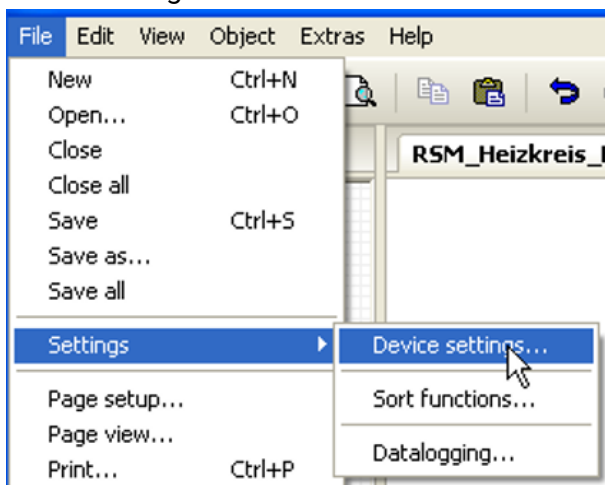
The **cable topology** of a CAN bus network is described in the installation instructions.

If a CAN input or CAN output is inserted into the drawing, the controller settings can be defined for the first time. These settings then apply to all other CAN elements as well.

CAN settings for the RSM610 module



These settings can also be entered in the menu "File / Settings / Device settings...":



Node

Define a **unique** CAN node number for the device (setting range: 1 – 62). The factory-set node number of the module is 32. The device with node number 1 provides the time stamp for all other CAN bus devices.

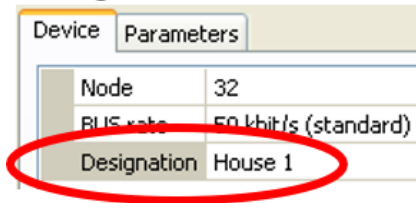
Bus rate

The standard bus rate of the CAN network is **50 kbit/s** (50 kBd), which is specified for most CAN bus devices.

Important: **All** devices in the CAN bus network must have the **same** transfer rate in order to be able to communicate with each other.

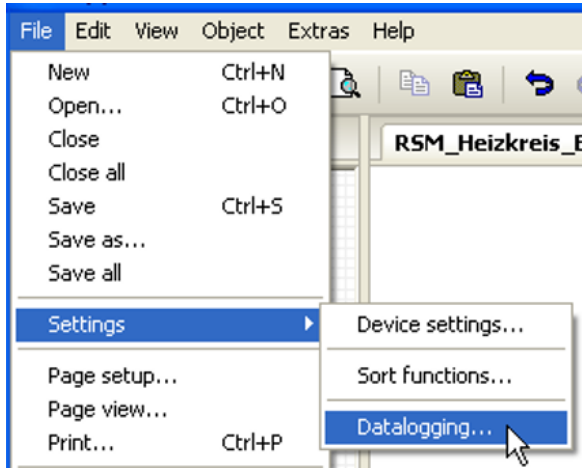
The bus rate can be set to between 5 and 500 kbit/s, with lower bus rates allowing longer cable networks (see installation instructions).

Designation



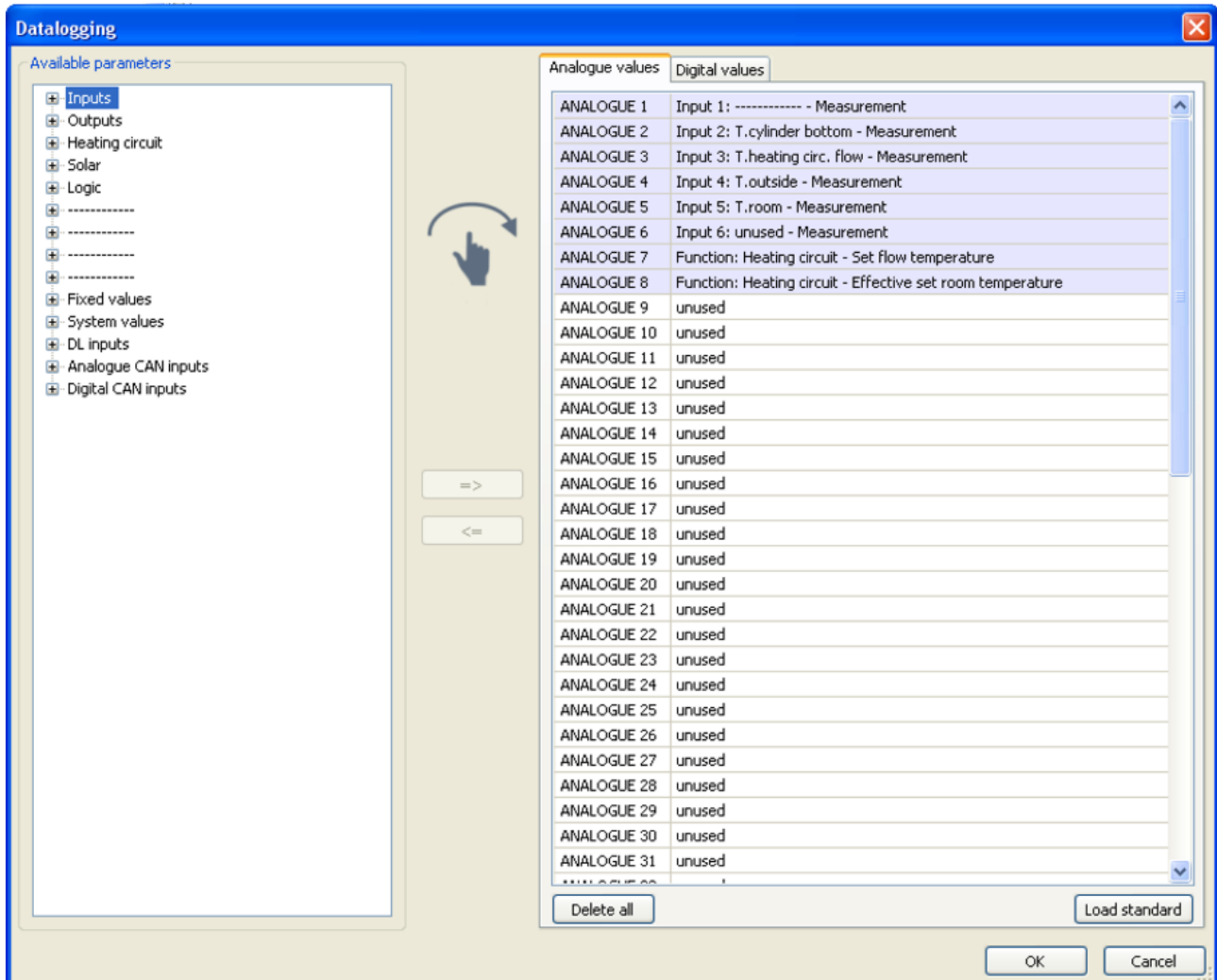
Every RSM610 can be given its own designation.

Datalogging



This menu is used to define the parameters for CAN datalogging of analogue and digital values.

Example: TAPPS2 predefines the programmed inputs and outputs by default. This default setting can be changed or expanded.



CAN datalogging requires at least version 1.25 on the C.M.I. datalogger and a Winsol version of at least 2.06.

CAN datalogging is only possible with the C.M.I. datalogger. The data to be logged can be freely selected. There is no constant data output. When requested by a C.M.I., the module saves the current values to a logging buffer and locks it to prevent it from being overwritten (if requests are received from another C.M.I.) until the data is read out and the logging buffer has been enabled again.

The settings required on the C.M.I. for datalogging via CAN bus are described in the C.M.I.'s online help.

Each controller can issue a maximum of 64 digital and 64 analogue values that are defined in the menu "**CAN bus/datalogging**" of the RSM610.

The sources for the logged values can be inputs, outputs, function output variables, fixed values, system values, or DL bus, CAN bus and M-Bus inputs.

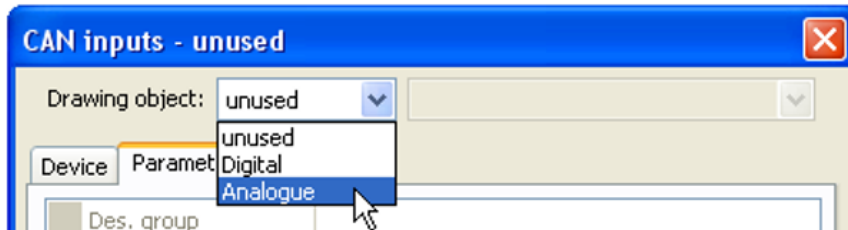
Note: Digital inputs must be defined within the range of **digital** values.

All counter functions (energy meters, heat meters, counters)

Any number of counter functions (but a maximum of 64 analogue values) can be logged. Like all other analogue values, the counter values to be logged are entered into the "Analogue datalogging" list.

CAN analogue inputs

Up to 64 CAN analogue inputs can be programmed. They are defined by specifying the **transmission** node number and the number of the **transmission** node's CAN output.



Node number

After the node number of the **transmission node** is entered, the other settings can be specified. The number of a CAN analogue output is taken from the device with that node number and applied here.

Example: On CAN analogue **input 1**, the output number applied is that of CAN analogue **output 1** from the device with node number 1.

General	
Node number	1
Output number	1

Designation

Every CAN input can be given its own designation. The designation can be selected from various designation groups or can be user defined, as for the other controller inputs.

Example:

Parameters	
Des. group	Temperature actual value
Designation	T.collector
Des. index	1

CAN bus timeout

Define the timeout time for the CAN input (minimum value: 5 minutes).

General	
Node number	1
Output number	1
CAN BUS timeout	00:20 [hh:mm]

As long as the information continues to be read from the CAN bus, the **network error** for the CAN input will be **"No"**.

If the value has not been updated for longer than the set timeout the **network error** changes from **"No"** to **"Yes"**. You can then define whether the controller should issue the last value transmitted or a definable substitute value (only when the measured variable is set to **User def.**).

The **network error** can be selected as the source of a function input variable, which allows the controller to react appropriately to a failure of the CAN bus or transmission node.

In **System values** / General, a network error for **all** CAN inputs is available.

Unit

If "Measured variable" is set to "**Automatic**", the unit of measurement specified by the transmission node will be applied in the controller.

Unit	
Measured variable	Automatic

If you select "**User def.**", you can select a **unit** of your own, a **sensor correction** and, if **sensor check** is active, a monitoring function.

Unit	
Measured variable	User def.
Unit	Temperature °C
Sensor correction	0,0 K

Every CAN input is assigned its own unit, which can differ from the unit used by the transmission node. A range of units is available to choose from.

Sensor correction: The value of the CAN input can be corrected by applying a fixed value.

Value at timeout

If the timeout time is exceeded, you can define here whether the controller should issue the last value transmitted ("Unchanged") or a definable substitute value.

Value at timeout		Unchanged
Output value	Unchanged	
Sensor check		User def.
Sensor check	Yes	



Value at timeout		User def.
Output value	20,0 °C	

Sensor check

If you set "Sensor check" to "Yes", the **sensor error** of the sensor supplying the CAN input is available as an input variable for a function.

☐ Sensor check	
Sensor check	Yes

Sensor error

This setting is only displayed if **sensor check is active and "Measured variable" is set to "User def."**.

When "**Sensor check**" is active, the **sensor error** of a CAN input is available as an input variable for functions: status "**No**" for a sensor that is working correctly and "**Yes**" for a defect (short circuit or lead break). This allows the controller to react to the failure of a sensor, for example.

☐ Sensor check	
Sensor check	Yes
☐ Short circuit threshold	Standard
Threshold value	
☐ Short circuit value	Standard
Output value	
☐ Lead break threshold	Standard
Threshold value	
☐ Lead break value	Standard
Output value	

If the **Standard** thresholds are selected, a short circuit will be indicated if the value falls below the **measurement limit** and a lead break will be indicated if the value exceeds the **measurement limit**.

The **Standard** values for temperature sensors are -9999.9 °C for a short circuit and 9999.9 °C for a lead break. Those values are utilised in the internal calculations in the event of an error.

☐ Sensor check	
Sensor check	Yes
☐ Short circuit threshold	Standard
Threshold value	Standard
☐ Short circuit value	User def.
Output value	

↓

☐ Short circuit threshold	User def.
Threshold value	0,0 °C

By selecting suitable thresholds and values for short circuit and lead break, a fixed value can be specified for the module in the event of sensor failure at the transmission node, to allow a function to continue operating in emergency mode (fixed hysteresis: 1.0 °C).

The short circuit threshold must be defined below the lead break threshold.

In **System values** / General, a sensor error for **all** inputs, CAN inputs and DL inputs is available.

CAN digital inputs

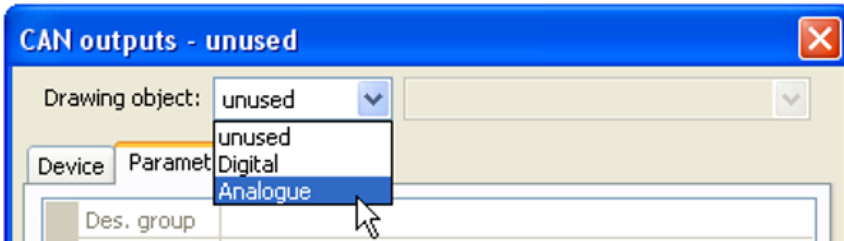
Up to 64 CAN digital inputs can be programmed. They are defined by specifying the **transmission** node number and the number of the **transmission** node's CAN output.

Their parameters are programmed in almost exactly the same way as for the CAN analogue inputs.

Under **Measured variable** / **User def.** the **Display** for the CAN digital input can be changed from **Off / On** to **No / Yes** and you can define whether the controller should issue the last status transmitted ("Unchanged") or a definable substitute status when the timeout time is exceeded.

CAN analogue outputs

Up to 32 CAN analogue outputs can be programmed. They are defined by specifying the **source** in the controller.



Link to the source in the module which supplies the value for the CAN output.

- **Inputs**
- **Outputs**
- **Functions**
- **Fixed values**
- **System values**
- **DL bus**

Example: Source Input 3

Input variable	
Source type	Input
Source	3: T.outside
Variable	Measurement

Designation

Every CAN analogue output can be given its own designation. The designation can be selected from various designation groups or can be user defined, as for the inputs.

Example:

Des. group	Temperature actual value
Designation	T.outside
Des. index	

Transmission conditions

Example:

Transmission condition	
If change >	10
Blocking time	00:10 [mm:ss]
Interval time	5 min

If change > 10	A new transmission will be made if the current value has changed by more than the quantity specified (1.0 K in this example) compared to the last transmitted value. In the module, the unit of the source is applied together with the corresponding decimal place. (minimum setting: 1)
Blocking time 00:10 [mm:ss]	If the value changes by more than 1.0 K within 10 seconds of the last transmission, the value is nevertheless only transmitted again after 10 seconds. (minimum setting: 1 sec.)
Interval time 5 min	The value is transmitted every 5 minutes even if it has not changed by more than 1.0 K since the last transmission. (minimum setting: 1 minute)

CAN digital outputs

Up to 32 CAN digital outputs can be programmed. They are defined by specifying the **source** in the module.

Their parameters are programmed in exactly the same way as for the CAN analogue outputs except for the transmission conditions.

Designation

Every CAN digital output can be given its own designation. The designation can be selected from various designation groups or can be user defined, as for the inputs.

Example:

Device	Parameters
Des. group	Output general
Designation	Heat pump demand
Des. index	

Transmission condition

Example:

Transmission condition	
If change	Yes
Blocking time	00:10 [mm:ss]
Interval time	5 min

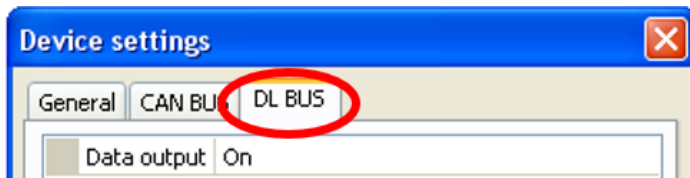
If change Yes/No	Transmission of the value if a status change occurs
Blocking time 00:10 [mm:ss]	If the value changes within 10 seconds of the last transmission, the value is nevertheless only transmitted again after 10 seconds (minimum setting: 1 sec.).
Interval time 5 min	The value is transmitted every 5 minutes even if it has not changed since the last transmission (minimum setting: 1 minute).

DL bus

The DL bus acts as a bus cable for various sensors and/or for datalogging by C.M.I. or DLOGG. The DL bus is a bidirectional data link and is only compatible with products from Technische Alternative. The DL bus network operates independently of the CAN bus network.

This menu contains all of the information and settings needed to set up a DL bus network. The **cable topology** of a DL bus network is described in the controller's installation instructions.

DL settings



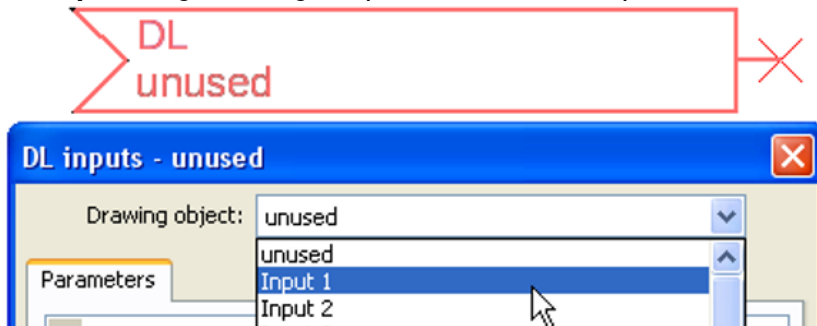
In the menu File / Settings / Device settings / DL BUS, you can activate or deactivate the data **output** for **datalogging** via the DL bus and for display on the **RAS-PLUS** room sensor. The C.M.I. can be used for **DL datalogging**. Only the input and output values and

the 2 heat meters are included in the data output; the values of the network inputs are not included.

DL input

Sensor values from DL bus sensors are transferred via a DL input. Up to 32 DL inputs can be programmed.

Example: Programming the parameters of DL input 1



Select: Analogue or digital

General	
Type	Analogue
Address	1
Index	1

DL bus address and DL bus index

Every DL sensor must have its own **DL bus address**. Setting the address of a DL sensor is described in the sensor's datasheet.

Most DL sensors can measure various different values (e.g. flow rate and temperatures). Every value measured must be given its own **index** number. The applicable index number can be found in the DL sensor's datasheet.

Designation

Every DL input can be given its own designation. The designation can be selected from various designation groups or can be user defined, as for the other controller inputs.

Example:

Parameter	
Des. group	Temperature actual value
Designation	T.solar flow
Des. index	

DL bus timeout

As long as the information continues to be read from the DL bus, the **network error** for the DL input will be "No".

If the controller scans the DL sensor value three times and no value is transmitted, the **network error** changes from "No" to "Yes". You can then define whether the controller should issue the last value transmitted or a definable substitute value (only when the measured variable is set to **User def.**).

The **network error** can also be selected as the source of a function input variable, which allows the controller to react appropriately to a failure of the DL bus or DL sensor.

In System values / General, a network error for **all** DL inputs is available.

Unit

If "Measured variable" is set to "Automatic", the unit of measurement specified by the DL sensor will be applied in the controller.

Unit	
Measured variable	Automatic

If you select "User def.", you can select a **unit** of your own, a **sensor correction** and, if **sensor check** is active, a monitoring function.

Unit	
Measured variable	User def.
Unit	Temperature °C
Sensor correction	0,0 K

Every DL input is assigned a **unit**, which can differ from the unit used by the DL sensor. A wide range of units is available to choose from.


Sensor correction: The value of the DL input can be corrected by applying a fixed differential value.

Value at timeout

This setting is only displayed if "Measured variable" is set to "User def."

If a timeout is set, you can define here whether the controller should issue the last value transmitted ("Unchanged") or a definable substitute value.

Value at timeout	Unchanged
Output value	Unchanged
Sensor check	User def.
Sensor check	No



Value at timeout	User def.
Output value	20,0 °C

Sensor check

If you set "Sensor check" to "**Yes**", the **sensor error** of the sensor supplying the DL input is available as an input variable for a function.

☐ Sensor check	
Sensor check	Yes

Sensor error

This setting is only displayed if **sensor check is active** and "Measured variable" is set to "**User def.**".

When "**Sensor check**" is active, the **sensor error** of a DL input is available as an input variable for functions: status "**No**" for a sensor that is working correctly and "**Yes**" for a defect (short circuit or lead break). This allows the controller to react to the failure of a sensor, for example.

☐ Sensor check	
Sensor check	Yes
☐ Short circuit threshold	Standard
Threshold value	
☐ Short circuit value	Standard
Output value	
☐ Lead break threshold	Standard
Threshold value	
☐ Lead break value	Standard
Output value	

If the **Standard** thresholds are selected, a short circuit will be indicated if the value falls below the **measurement limit** and a lead break will be indicated if the value exceeds the **measurement limit**.

The **Standard** values for temperature sensors are -9999.9 °C for a short circuit and 9999.9 °C for a lead break. Those values are utilised in the internal calculations in the event of an error.

☐ Sensor check	
Sensor check	Yes
☐ Short circuit threshold	Standard
Threshold value	Standard
☐ Short circuit value	User def.
Output value	

↓

☐ Short circuit threshold	User def.
Threshold value	0,0 °C

By selecting suitable thresholds and values for short circuit and lead break, a fixed value can be specified for the module in the event of sensor failure, to allow a function to continue operating in emergency mode (fixed hysteresis: 1.0 °C).

The short circuit threshold must be defined below the lead break threshold.

In System values / General, a sensor error for **all** inputs, CAN inputs and DL inputs is available.

DL digital inputs

The DL bus is configured for the transfer of digital values as well as analogue. However, there is not yet any use for this at present.

The parameters are programmed in almost exactly the same way as for the DL analogue inputs.

Under **Measured variable / User** the **Display** for the DL digital input can be changed to **No / Yes**.

Bus load of DL sensors

A 2-pole cable provides **both** the power supply and the signal transfer for DL sensors. An additional power supply by means of an external power supply unit (such as with the CAN bus) is not possible. As the DL sensors have a relatively high power demand, the "**bus load**" must be considered:

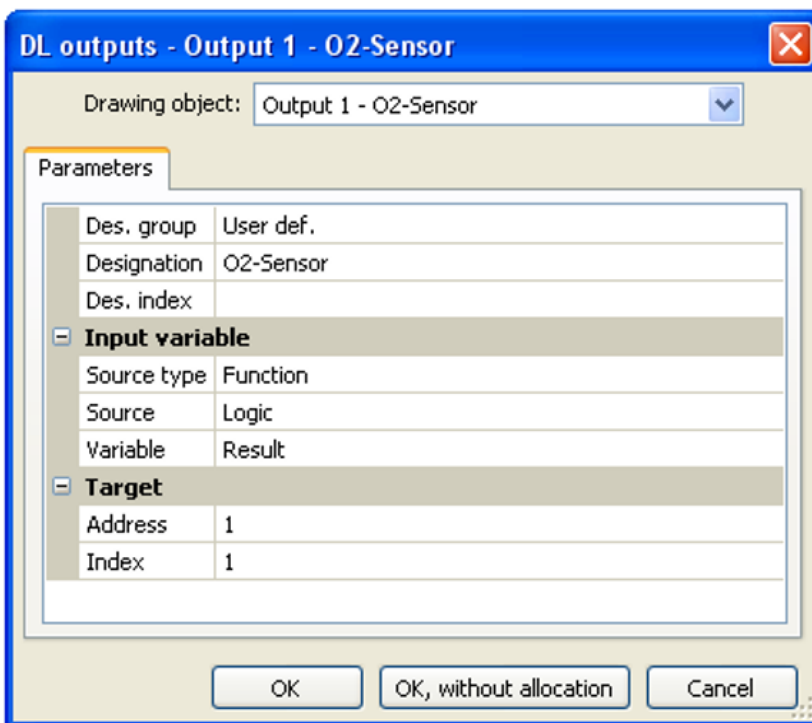
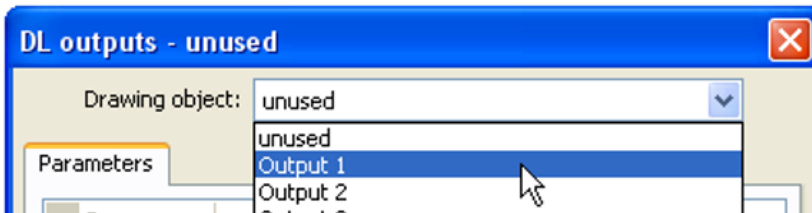
The RSM610 module supplies **100 %** of the bus load. The bus loads of the DL sensors are listed in the technical data of each DL sensor.

Example: The DL sensor FTS4-50DL has a bus load of **25 %**. Consequently, up to four FTS4-50DL sensors can be connected to the DL bus.

DL output

Analogue and digital values can be transmitted to the DL bus network via a DL output. For example, a **digital command** to activate an O₂-DL O₂ sensor can be output.

Example: Programming the parameters of DL output 1



Entering the designation

Specify the source in the controller which supplies the value for the DL output.

- **Inputs**
- **Outputs**
- **Functions**
- **Fixed values**
- **System values**
- **CAN bus analogue**
- **CAN bus digital**

Specify the destination address of the DL sensor to be activated.

For the activation of the O₂ sensor, the index has no effect and can be ignored.

System values

The following system values can be selected as the **source** for function input variables and CAN and DL outputs:

- **General**
- **Time**
- **Date**
- **Sun**

General system values

When programmed accordingly, these system values allow monitoring of the controller system.

- **Controller start**
- **Sensor error inputs**
- **Sensor error CAN**
- **Sensor error DL**
- **Network error CAN**
- **Network error DL**

Controller start generates a 20 second pulse 40 seconds after the device is switched on or reset, and is used for monitoring the controller starts (e.g. after power failures) in the datalogging feature. The interval time in datalogging should be set to 10 seconds for these starts.

The **sensor errors** and **network errors** are global digital values (No/Yes) which are not connected to the error status of a specific sensor or network input.

If any one of the sensors or network inputs has an error, the status of the corresponding group changes from **No** to **Yes**.

Time system values

- **Second** (seconds of the current time)
- **Minute** (minutes of the current time)
- **Hour** (hour of the current time)
- **Second pulse**
- **Minute pulse**
- **Hour pulse**
- **Summertime** (digital value OFF/ON)
- **Time** (hh:mm)

Date system values

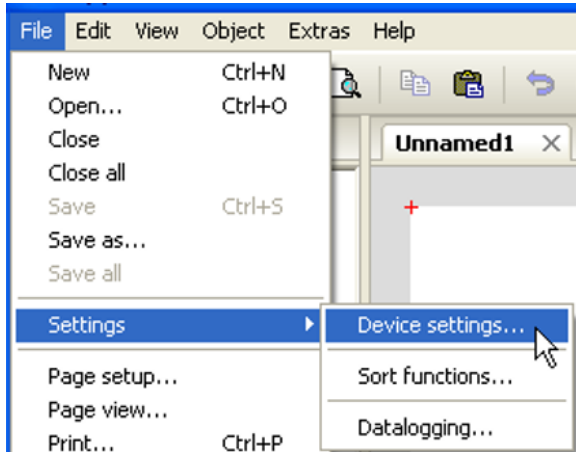
- **Day**
- **Month**
- **Year** (without the century)
- **Day of the week** (starting with Monday)
- **Calendar week**
- **Day of the year**
- **Day pulse**
- **Month pulse**
- **Year pulse**
- **Week pulse**

The pulse values generate a single pulse per time unit.

Sun system values

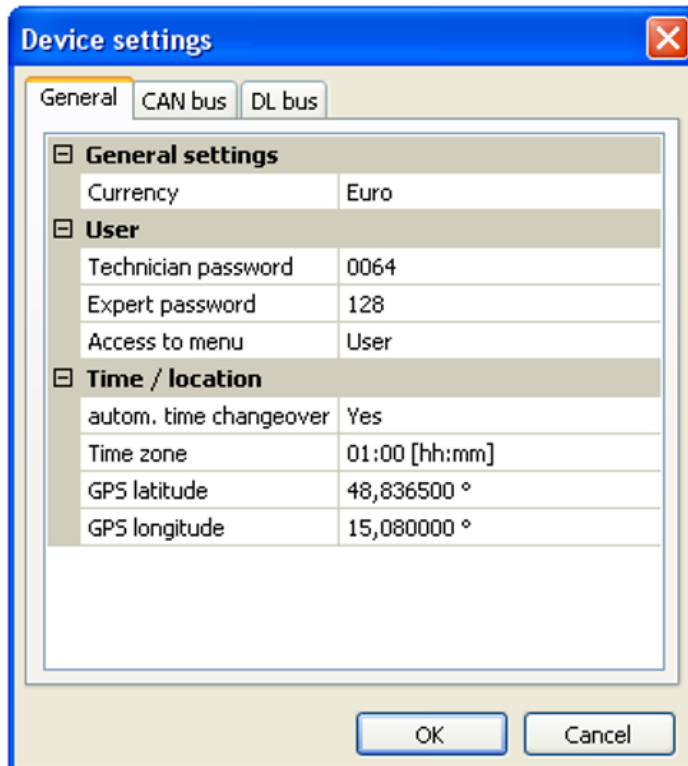
- **Sunrise** (time)
- **Sunset** (time)
- **Minutes until sunrise** (on the same day, does not go beyond midnight)
- **Minutes since sunrise**
- **Minutes until sunset**
- **Minutes since sunset** (on the same day, does not go beyond midnight)
- **Solar altitude** (see Shading function)
- **Direction of the sun** (see Shading function)
- **Solar altitude > 0°** (digital value ON/OFF)

Device settings



This menu allows global settings to be made for the module, the CAN bus and the DL bus.

General



Currency

Select the currency for yield metering

Technician / Expert password

Entry of the passwords for this programming.

Access to menu

Definition of the user levels from which access to the **main menu** is permitted.

If only **technicians** or **experts** are permitted to access the menu, then the relevant **password** must be entered when selecting the main menu from the start page of the function overview.

Time / location

- **Automatic time change** – If "Yes", the time will switch over automatically to summertime according to the specifications of the European Union.
- **Time zone** – 01:00 means the time zone "**UTC + 1 hour**". **UTC** stands for "Universal Time Coordinated", also known as GMT (= Greenwich Mean Time).
- **GPS latitude** – Geographical latitude according to GPS (= global positioning system)
- **GPS longitude** – Geographical longitude according to GPS

The values for geographical latitude and longitude are used to determine the location-specific solar data. That data can be used in functions (e.g. shading function).

The factory default settings for the GPS data are for the location of Technische Alternative in Ama-liendorf, Austria.

CAN bus / DL bus / M-Bus

These settings are described in the CAN bus, DL bus and M-Bus chapters.

C.M.I. menu

Changing set values

Example:

Changing the "T.room standard" value of the heating circuit function

Heating circuit

Operation: RAS (Normal(1))

Room temperature

Act. T.room: 21.0 °C (Time/auto)

T.room setback: 16.0 °C

T.room standard: 21.0 °C (selected)

Eff. T.room: 21.0 °C

When the required field is clicked, a drop-down list appears:

Change Value

0.0 - 45.0 °C

21

OK Abbrechen

The current value is shown (example: 21.0 °C). The set value can be changed by clicking the UP or DOWN arrow. It is also possible to highlight the value and overwrite it with the required value (example: 22.5 °C):

Change Value

0.0 - 45.0 °C

22,5

OK Abbrechen

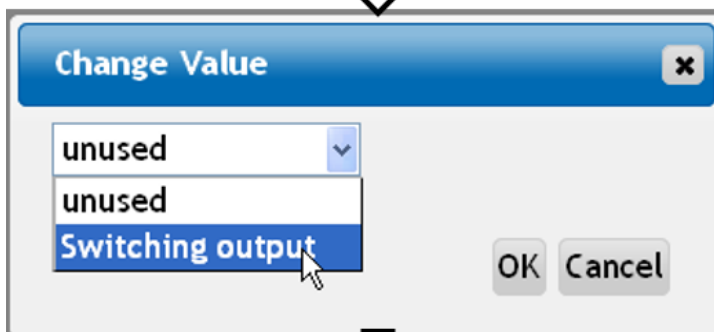
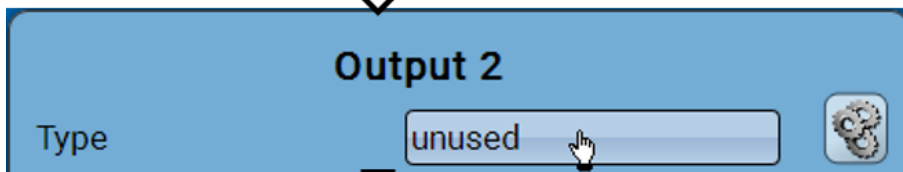
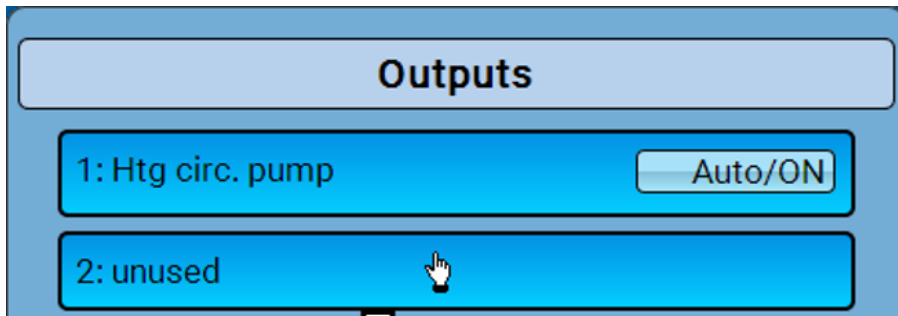
Abschluss mit „OK“, dann wird der Wert im Modul übernommen.

T.room standard: 22.5 °C

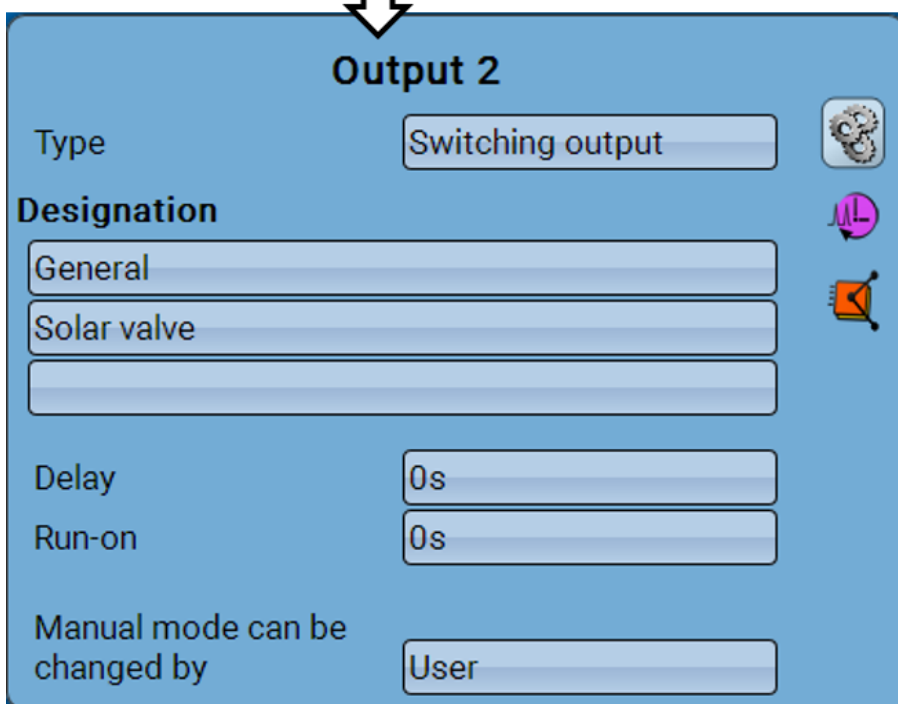
Creating new elements

Of inputs or outputs, fixed values, functions, messages, CAN or DL bus

Example: Using a previously unused output to create a switching output:



After making your selection, finish with "OK".



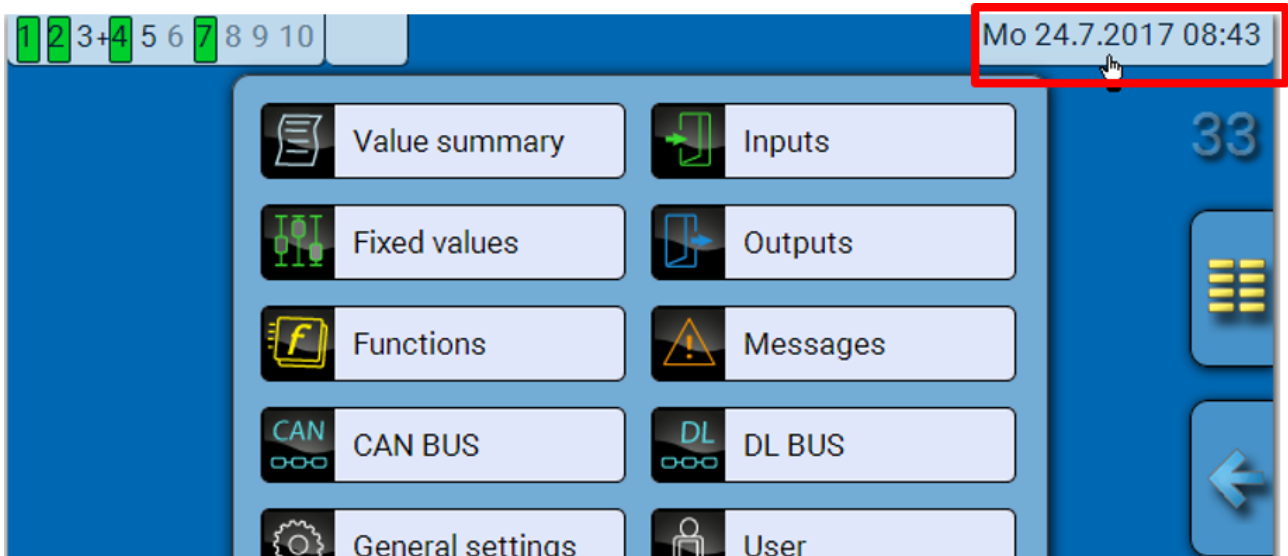
You can then enter a designation and change other settings.

Date / time / location

The "Date" and "Time" are shown in the status line at top right.

In a CAN network, the date and time are taken from network node 1.

Tapping that status field takes you to the menu for the date, time and location details.



Example:

Date / time / location	
Time zone	01:00
Summertime	Yes
Automatic time change	Yes
Date	24.07.2017
Time	08:44
GPS latitude	48.836500 °
GPS longitude	15.080000 °
Sunrise	05:21
Sunset	20:51
Solar altitude	31.0 °
Direction of the sun	94.4 °

Changes to the time and date will only be transferred if no other device in the network has the node number 1.

The system value parameters are displayed first.

- **Time zone** – Specifies the time zone relative to UTC (= "Universal Time Coordinated", also known as GMT (= Greenwich Mean Time)). In the example, the time zone is set to "UTC + 01:00".
- **Summertime** – "Yes" if summertime is active.
- **Automatic time change** – If "Yes", the time will switch over automatically to summertime according to the specifications of the European Union.
- **Date** – The current date (dd.mm.yy).
- **Time** – The current time
- **GPS latitude** – Geographical latitude according to GPS (= global positioning system)
- **GPS longitude** – Geographical longitude according to GPS

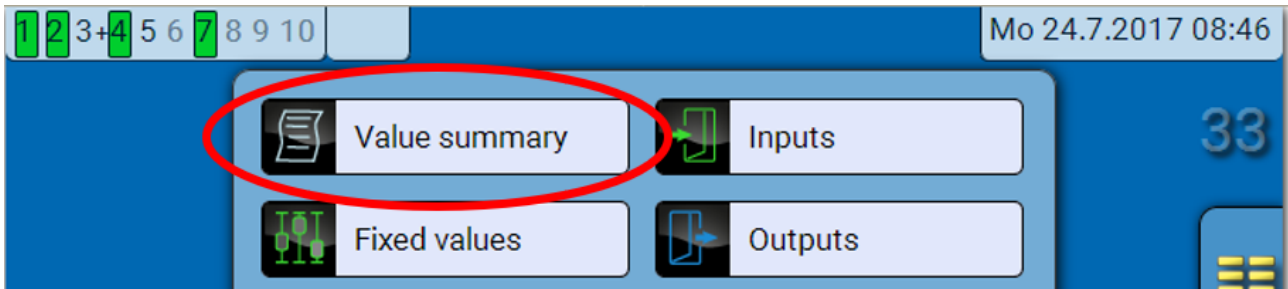
The values for geographical latitude and longitude are used to determine the location-specific solar data. That data can be used in functions (e.g. shading function).

The factory default settings for the GPS data are for the location of Technische Alternative in Ama-liendorf, Austria.

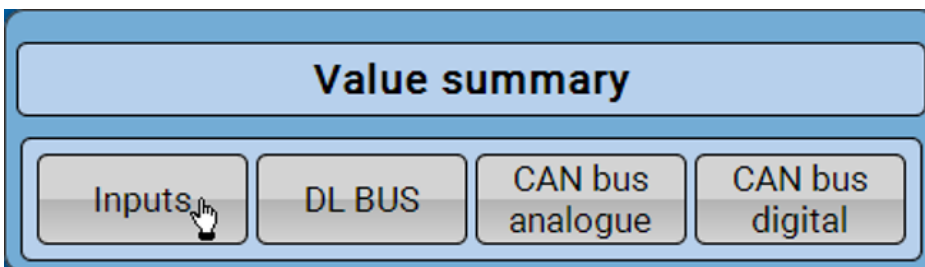
- **Sunrise** – Time
- **Sunset** – Time
- **Solar altitude** – Specified in ° as measured from the geometric horizon (0°),
zenith = 90°
- **Direction of the sun** – Specified in ° as measured from the north (0°)
North = 0°
East = 90°
South = 180°
West = 270°

Value summary

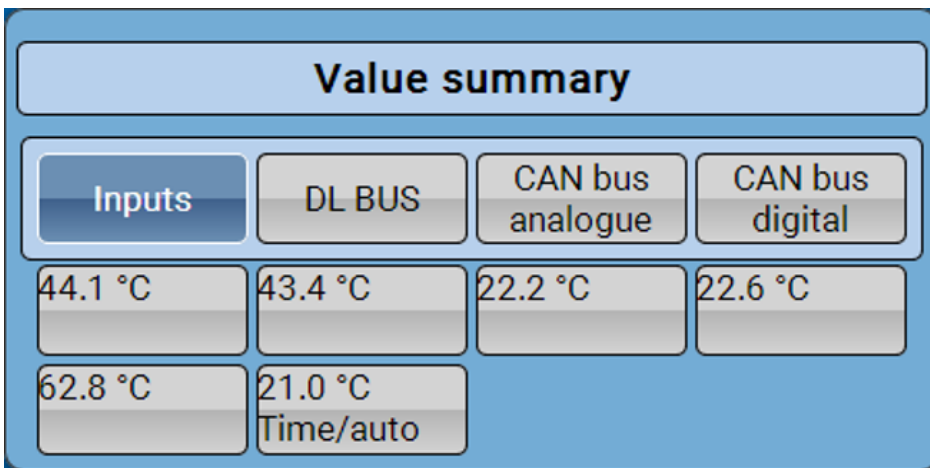
This menu item shows the current values for **inputs** 1 –6, the **DL inputs** and the analogue and digital **CAN inputs**.



The various values are displayed by selecting the group required.



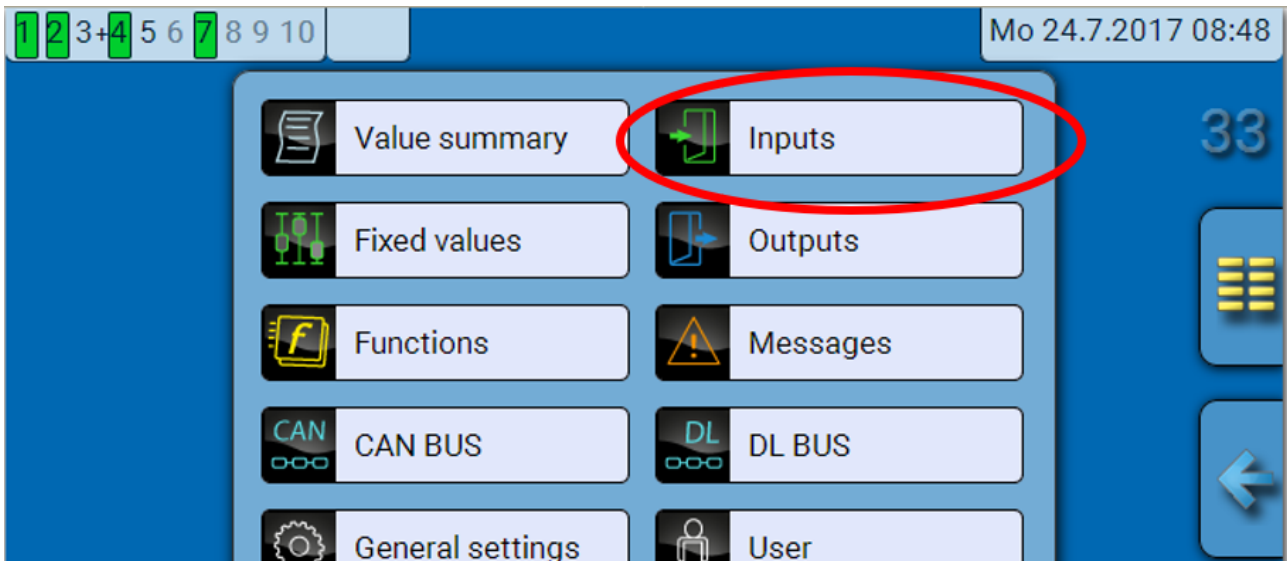
Example: Inputs



Inputs

The **method** for programming parameters via the C.M.I. is always the same, so only one example is described here: the programming of parameters for the inputs.

The module has **6 inputs** for analogue signals (measurements), digital signals (ON/OFF) or pulses.



When this item is selected in the main menu, the inputs are displayed together with their designation and their current measurement or status.

Example of a programmed system; input 6 is still unused:

Inputs	
1: T.room	20.7 °C Time/auto
2: T.heating circ. flow	40.2 °C
3: T.outside	7.8 °C
4: T.collector	65.4 °C
5: T.cylinder bottom 1	56.0 °C
6: unused	

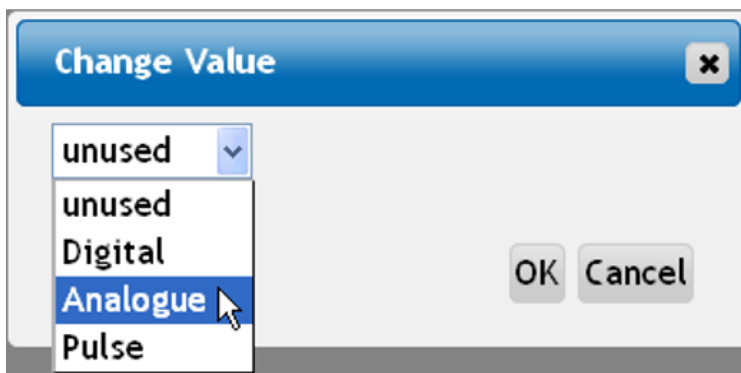
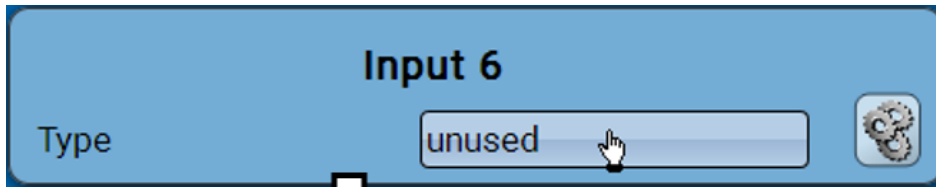
Programming the parameters

Sensor type, measured variable and process variable

Once the required input is selected, the sensor type can be defined.



First, you must specify the basic type of input signal.



Then select the **measured variable**. For the measured variable "**Temperature**", you must also define the **sensor type**.

For the measured variables **Voltage** and **Resistance**, select the process variable:

- Dimensionless
- Dimensionless (.1)
- Performance factor
- Dimensionless (.5)
- Temperature °C
- Global radiation
- CO₂ content ppm
- Percent
- Absolute humidity
- Pressure bar, mbar, Pascal
- Liter
- Cubic meter
- Flow rate (l/min, l/h, l/d, m³/min, m³/h, m³/d)
- Output
- Voltage
- Amperage mA
- Amperage A
- Resistance
- Speed km/h
- Speed m/s
- Degree (angle)

Then you must use scaling to define the value range.

Example Voltage/Global radiation:

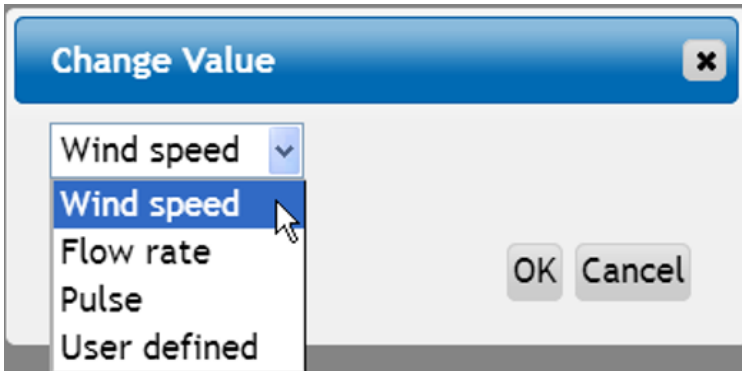


0.00 V equates to 0 W/m², 3.00V yields 1500 W/m².

Pulse input

Input **6** can capture pulses of **max. 20 Hz** and at least **25 ms** pulse duration (**50** pulses).
 Inputs **2 – 5** can capture pulses with **max. 10 Hz** and a pulse duration of at least **50 ms**.

Select the measured variable



Wind speed

A quotient must be entered for the "**Wind speed**" measured variable. This is the signal frequency at **1 km/h**.

Example: The **WIS01** wind sensor issues one pulse (=1Hz) per second at a wind speed of 20 km/h. Therefore the frequency at 1 km/h equals 0.05Hz.

Quotient	0.05 Hz
----------	---------

Setting range: 0.01 – 1.00 Hz

Flow rate

A quotient must be entered for the "**Flow rate**" measured variable. This is the flow rate in litres per pulse.

Quotient	0.5 l/Imp
----------	-----------

Setting range: 0.1 – 100.0 l/pulse

Pulse

This measured variable is used as the input variable for the "**Meter/Counter**" function, as a pulse counter with "Pulses" as its unit.

User defined

For the "**User defined**" measured variable, both the quotient **and** the unit must be entered.

Quotient	0.50000 l/Imp
Unit	l
Time unit	/h

Setting range for quotient: 0.00001 – 1000.00000 units/pulse (5 decimal places)
 Units: l, kW, km, m, mm, m³.

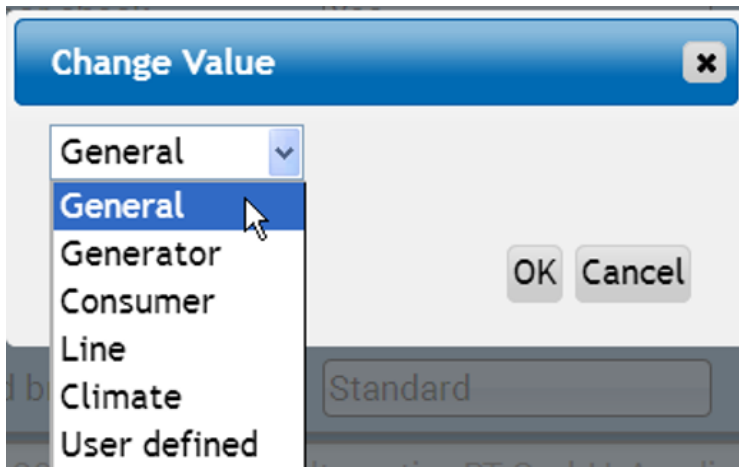
For l, mm and m³ the unit of time must be selected as well. For km and m the units of time are pre-defined and cannot be changed.

Example: For the "Energy meter" function, the unit "kW" can be used. In the example above, 0.00125 kWh/pulse was selected, which equates to 800 pulses /kWh.

Quotient	0.00125 kWh/Imp
Unit	kW

Designation

Enter the input designation by selecting a predefined designation from various designation groups or from the user defined designations.



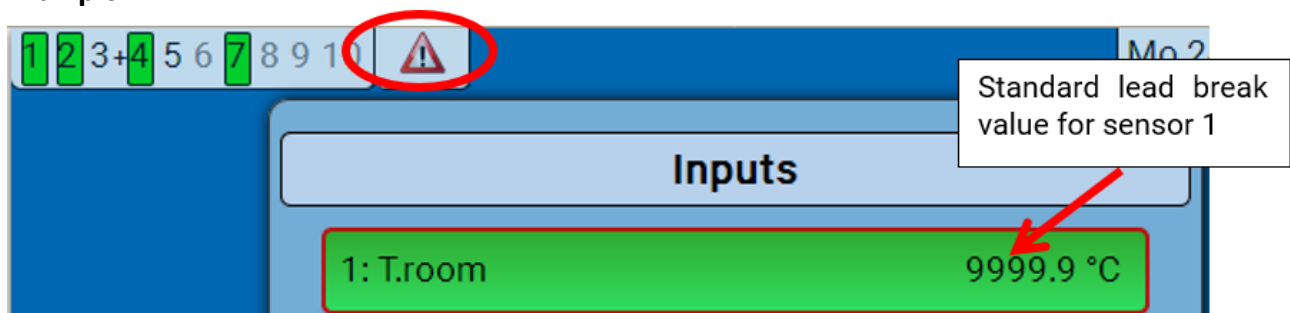
You can also assign a number from 1 to 16 to every designation.

Sensor correction, average, sensor check (for analogue sensors)

Sensor correction	0.0 K
Average	1.0s
Sensor check	Yes

When "Sensor check" is active (setting: "Yes"), a short circuit or a lead break will **automatically** generate an error message: A **warning symbol** is displayed in the upper status line, and the defective sensor is shown with a red border around it in the "Inputs" menu.

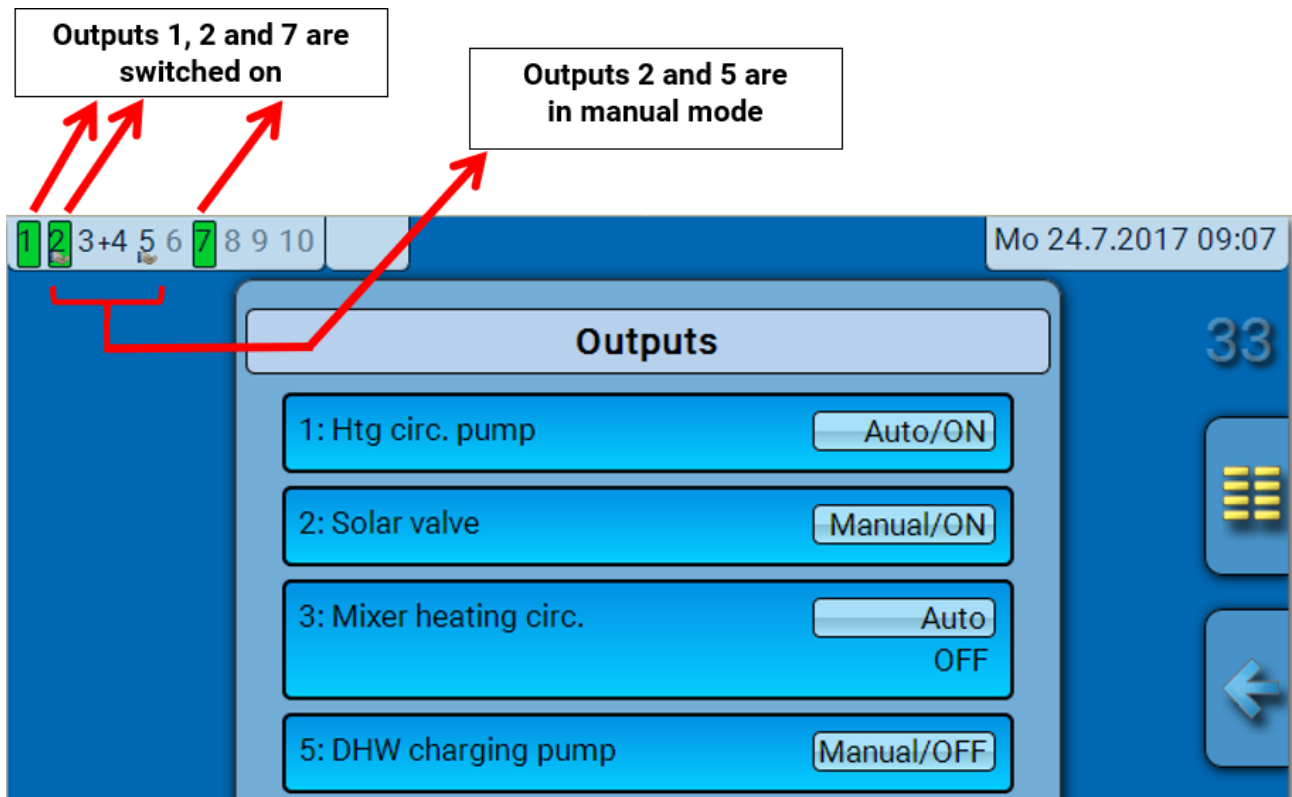
Example:



Outputs

Display of outputs status

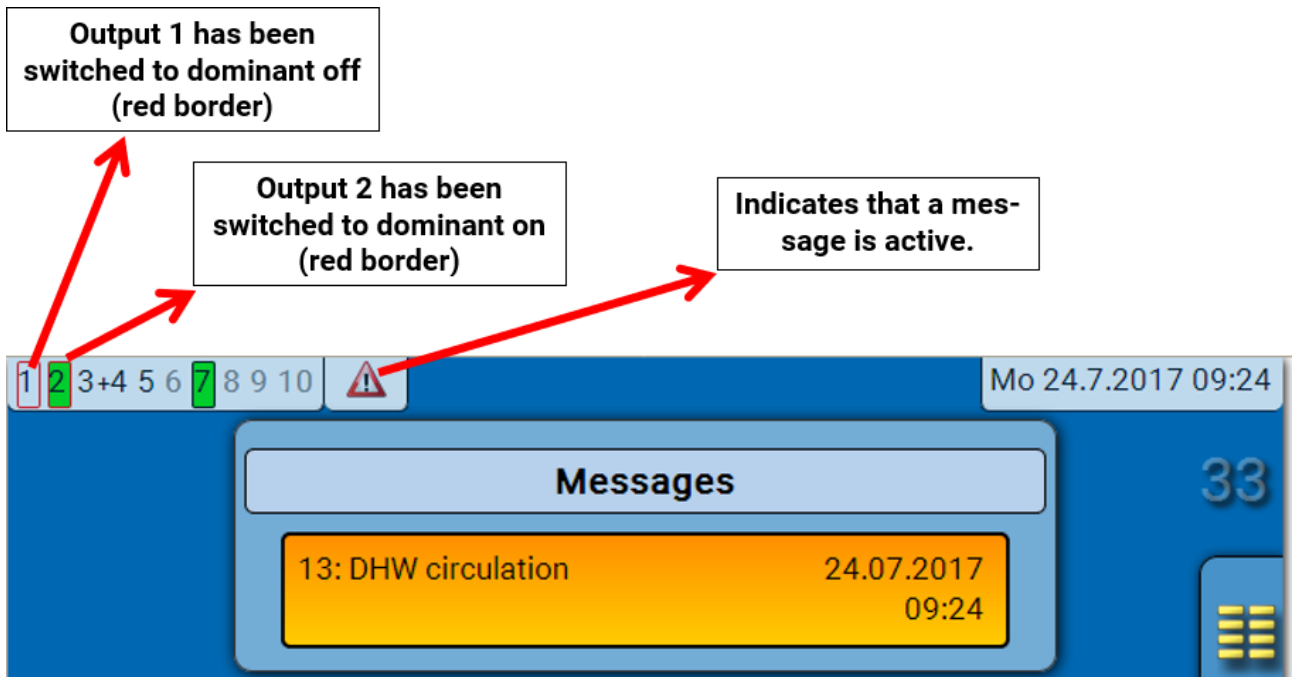
Example of a system already programmed:



The **switched-on** outputs are highlighted in **green**.

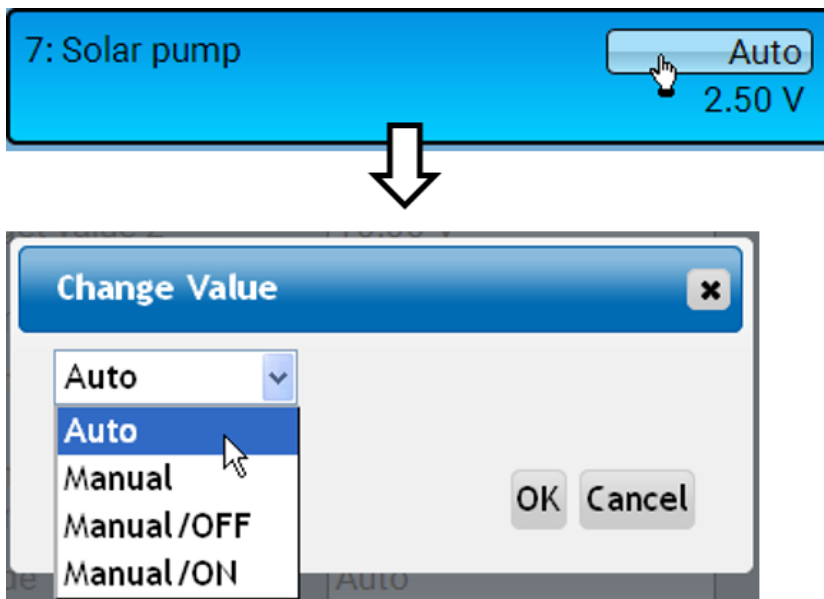
Outputs in **manual mode** are marked with a **hand symbol** under the output number.

Example: **Outputs switched dominant** (by the "Message" function):



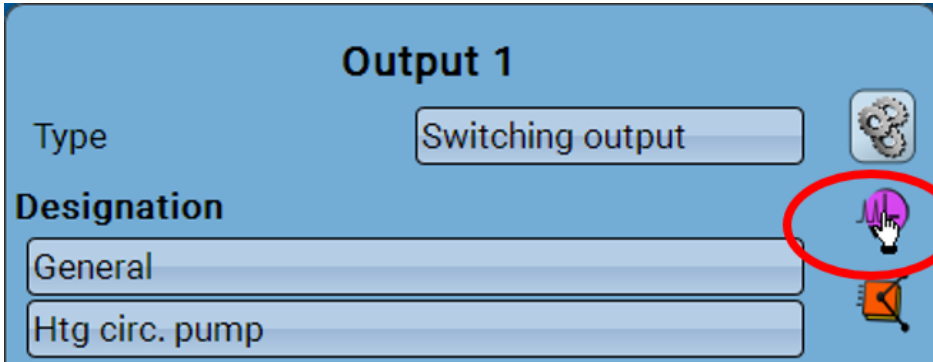
Display of analogue outputs

The C.M.I menu display shows the operating status and output value of the analogue output.



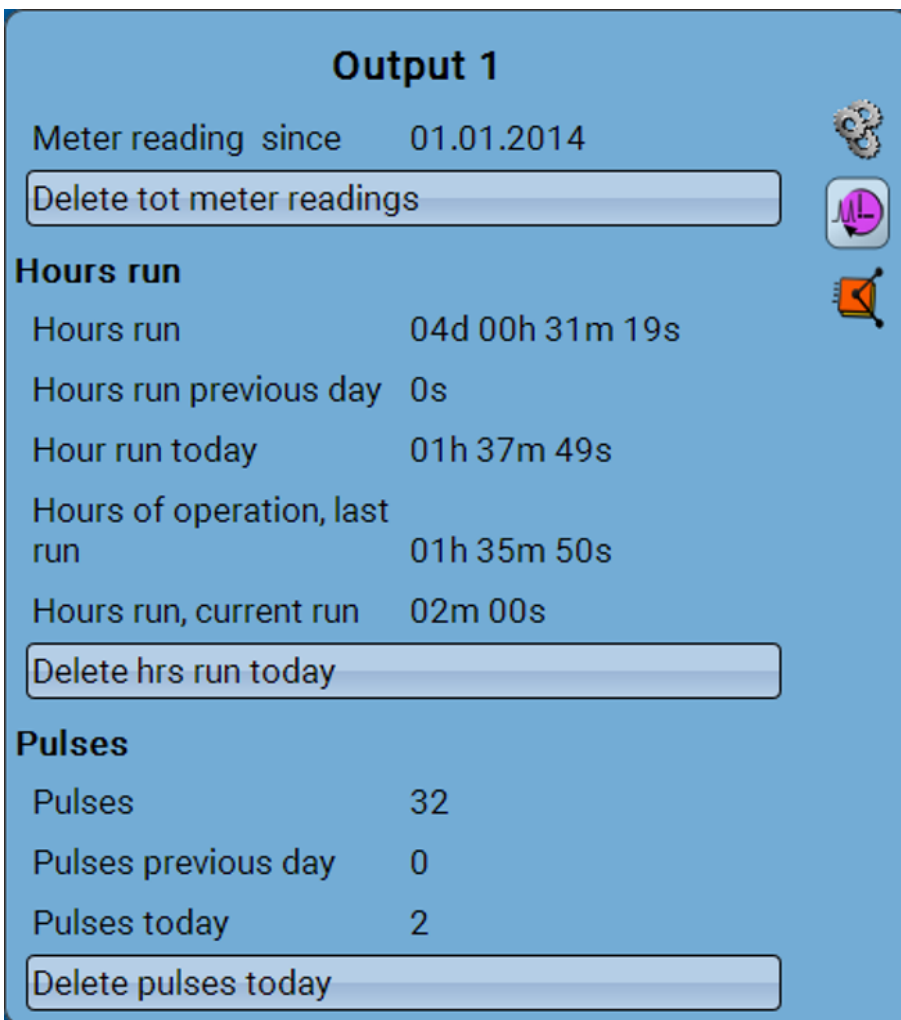
- **Auto:** Output issued according to the source and scaling
- **Manual:** Adjustable value
- **Manual/OFF:** Output issued according to "Dominant off" setting
- **Manual/ON:** Output issued according to "Digital on" setting

Output meter



Selecting this icon allows you to see the hours run and pulses (times switched on) **for every output**.

Example: For output 1, the meter reading since 01/01/2014 can be viewed.



The meter shows the total hours run, the hours run the previous day and today, and the previous runtime and the current runtime.

Below the hours run, the pulses (how many times The meter shows the total number of pulses (times switched on), the number of pulses on the previous day and the number today.

- **CAUTION:** The meter readings are saved to the internal memory every hour. Therefore, in the event of a power failure, no more than 1 hour of metering can be lost.
- When loading function data, you will be asked whether you want to apply the saved meter readings.

Deleting meter/counter readings

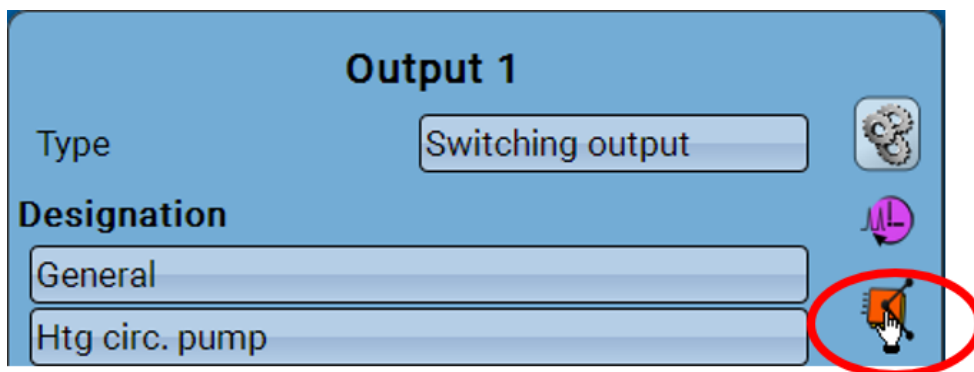
Deleting total meter/counter readings

If you click the button, you will be asked whether you want to delete the **total** readings and the "**Previous day**" readings for the hours run meter **and** the pulse counter. The "**Today**" and "**Last run**" and "**Current run**" readings will not be deleted.

Deleting hours run or pulses today

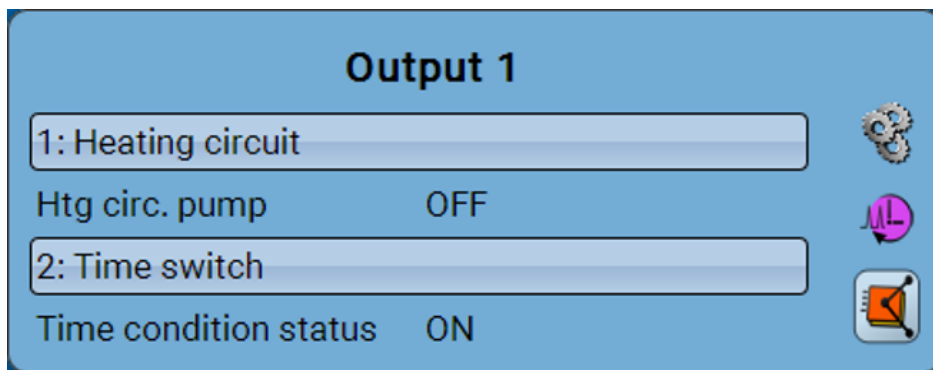
If you click the button, you will be asked whether you want to delete the hours run or pulses counted **today**. This will **not** delete the hours run for "**Last run**" and "**Current run**"

Display of links



When you select this icon, the output's links to the functions will be displayed.

Example:



In this example, output 1 is controlled by two functions, and it has just been switched on by function 2 (Time switch).

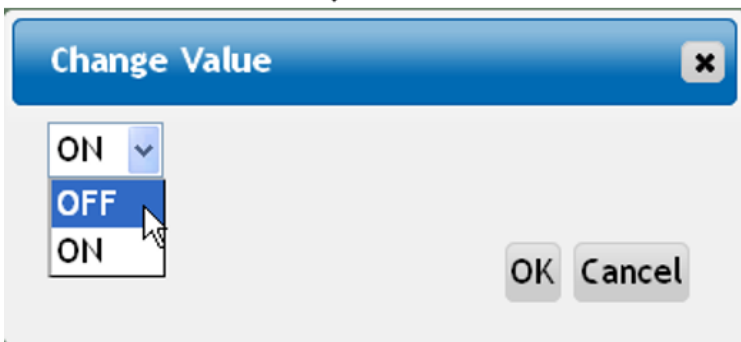
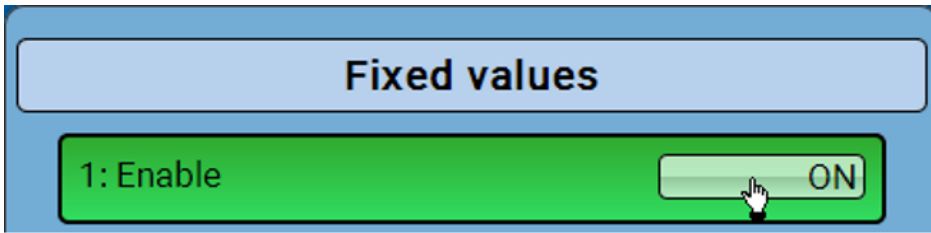
Tapping a function takes you **directly** to the programming of the parameters for that function.

Fixed values

Changing a digital fixed value

Tapping a button with a **light background** allows you to change the fixed value.

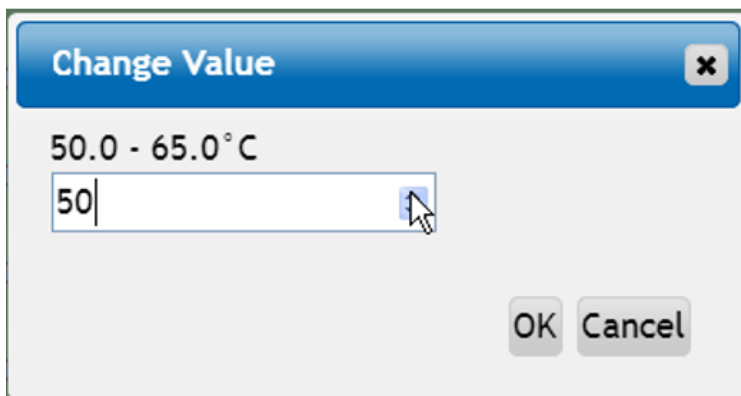
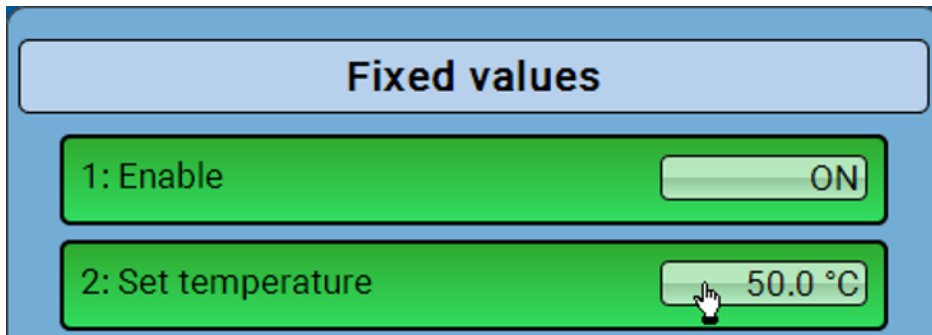
Example: Changeover from **ON** to **OFF** via a selection box



Changing an analogue fixed value

Tapping a button with a **light background** allows you to change the fixed value.

Example:

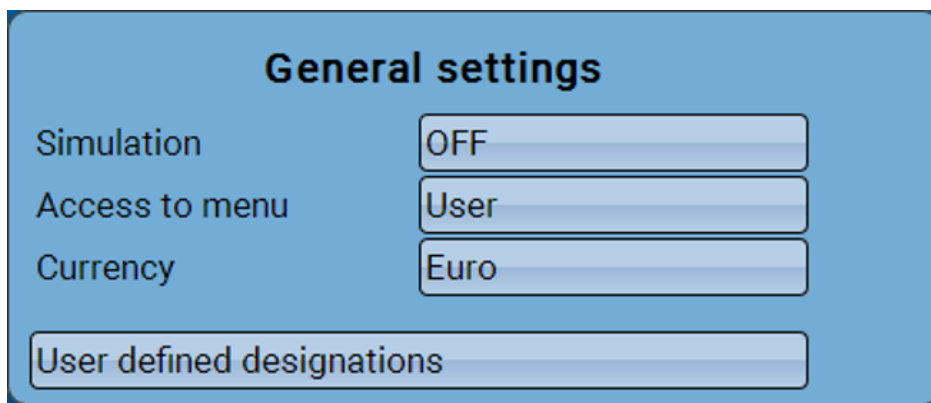
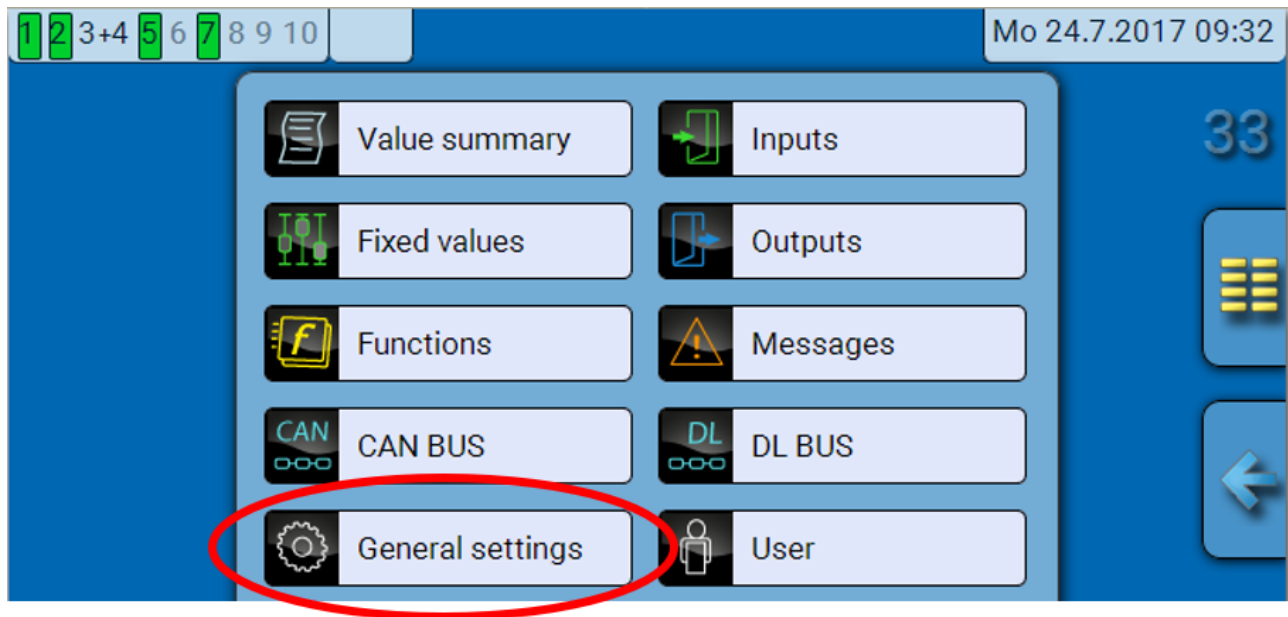


Activating a pulse fixed value

Tapping a button with a **light background** allows you to change the fixed value.



General settings



This menu is only accessible for the "Technician" or the "Expert".

This menu allows settings to be made which then take effect for all other menus and displays.

Simulation - Option of activating the simulation mode (only possible in Expert mode):

- No averaging of the outside temperature in heating circuit control.
- All temperature inputs are measured as PT1000 sensors, even if a different sensor type is defined.
- The RAS features of room sensors are ignored.

Select from: **OFF**

Analogue – Simulation with the EWS16x2 development set

CAN SIM board – Simulation with SIM-BOARD-USB-UVR16x2 for simulation in a system

The simulation mode is ended automatically when you exit the Expert level.

Access to menu - Definition of the user levels from which access to the **main menu** is permitted.

If only **technicians** or **experts** are permitted to access the menu, then the relevant **password** must be entered when selecting the main menu.

Currency – Select the currency for yield metering

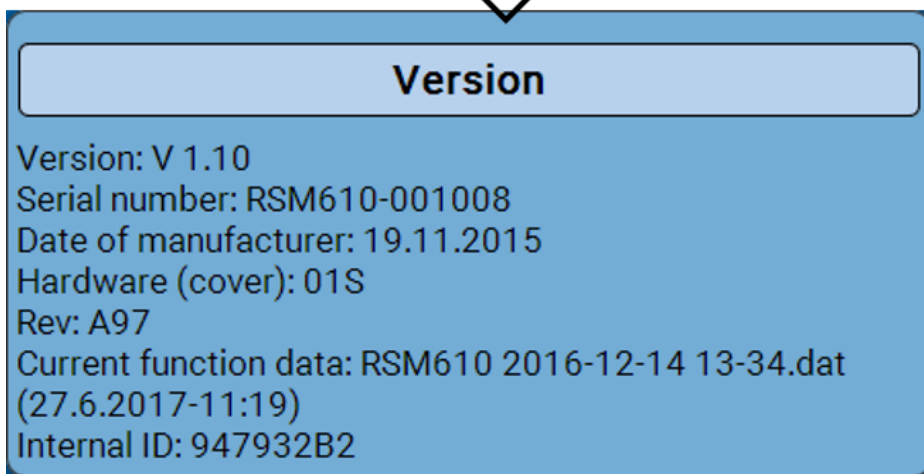
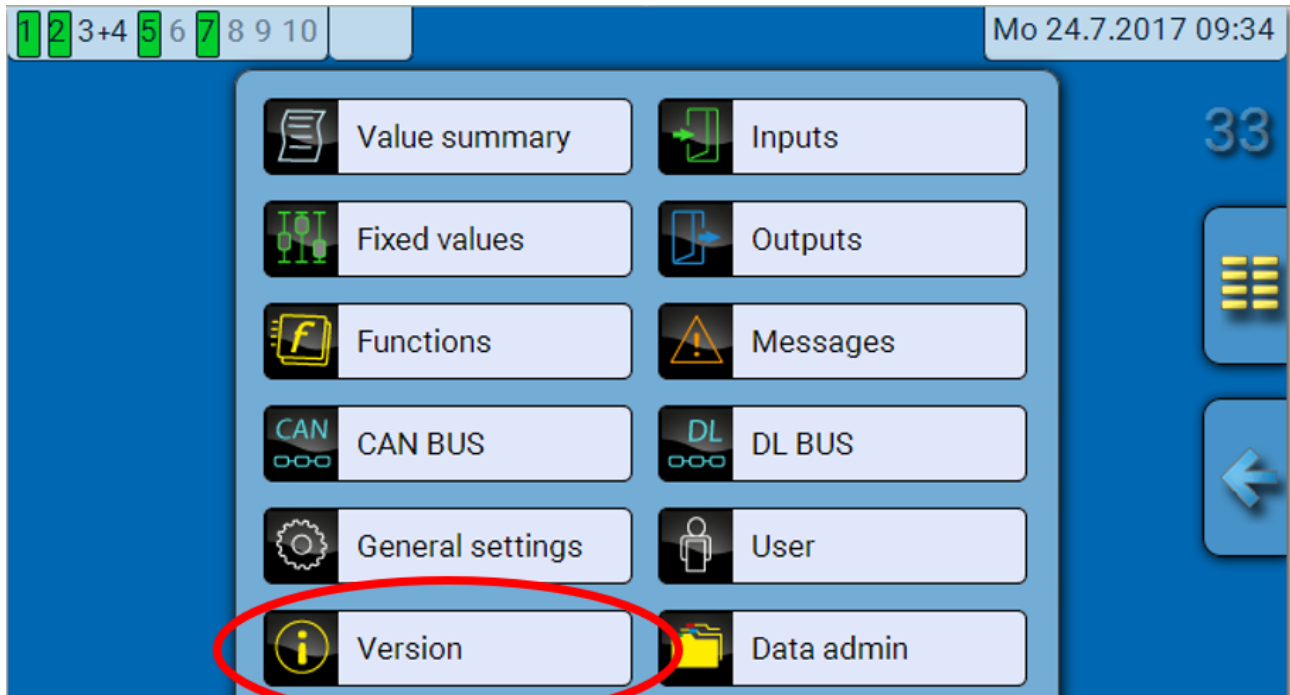
User defined designations - All elements can be designated by selecting a predefined designation from various designation groups or from the user defined designations.

Up to 100 different designations can be defined by the user. The maximum number of characters per designation is **24**.

Designations defined previously are available for all elements (inputs, outputs, functions, fixed values, bus inputs and outputs).

Version and serial number

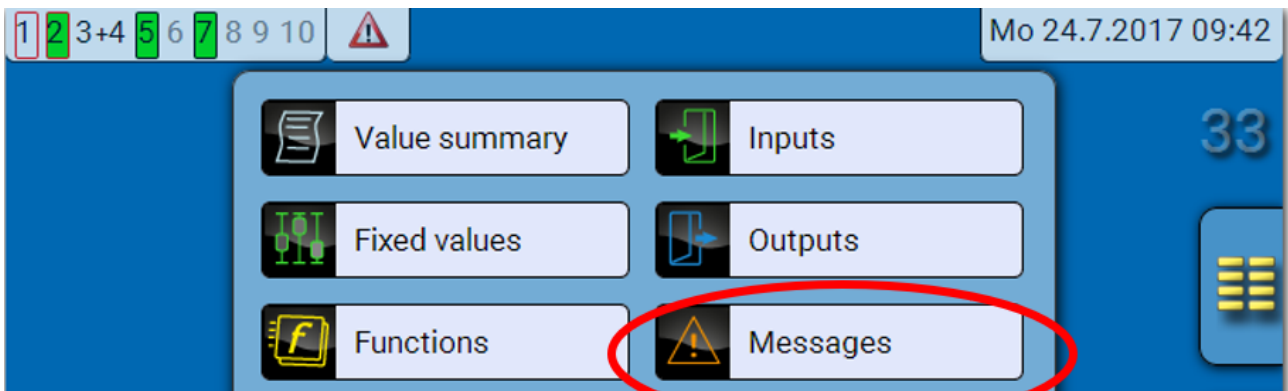
This menu item displays the operating system version (firmware), the serial number and internal production data.



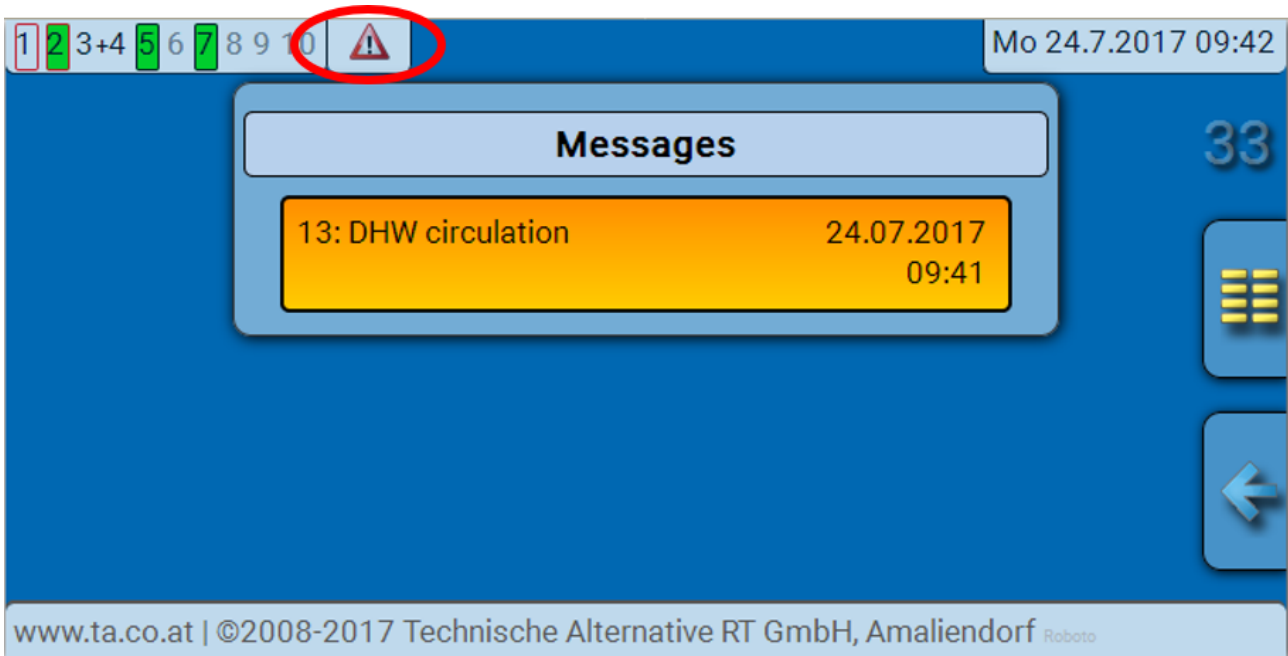
Die Seriennummer ist auch am Leistungsschild des Moduls ersichtlich.

Messages

This C.M.I. menu displays activated messages.



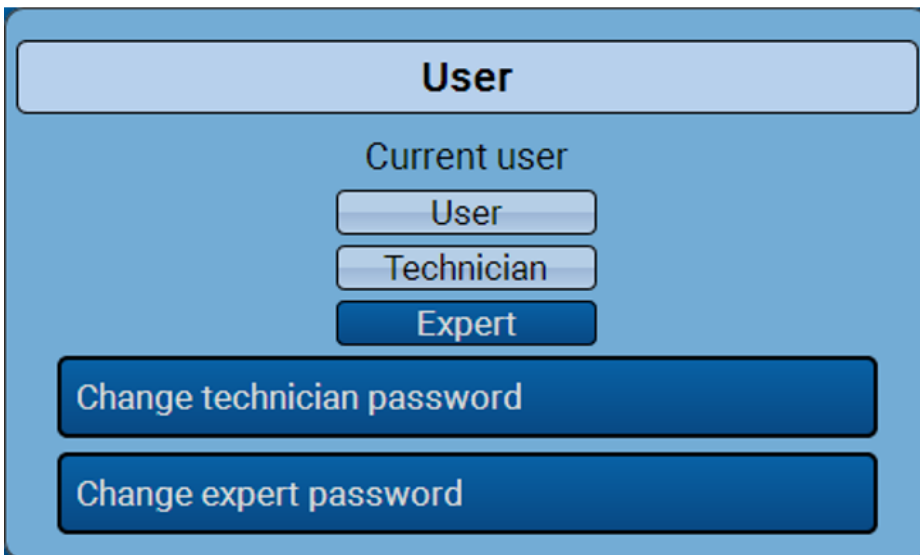
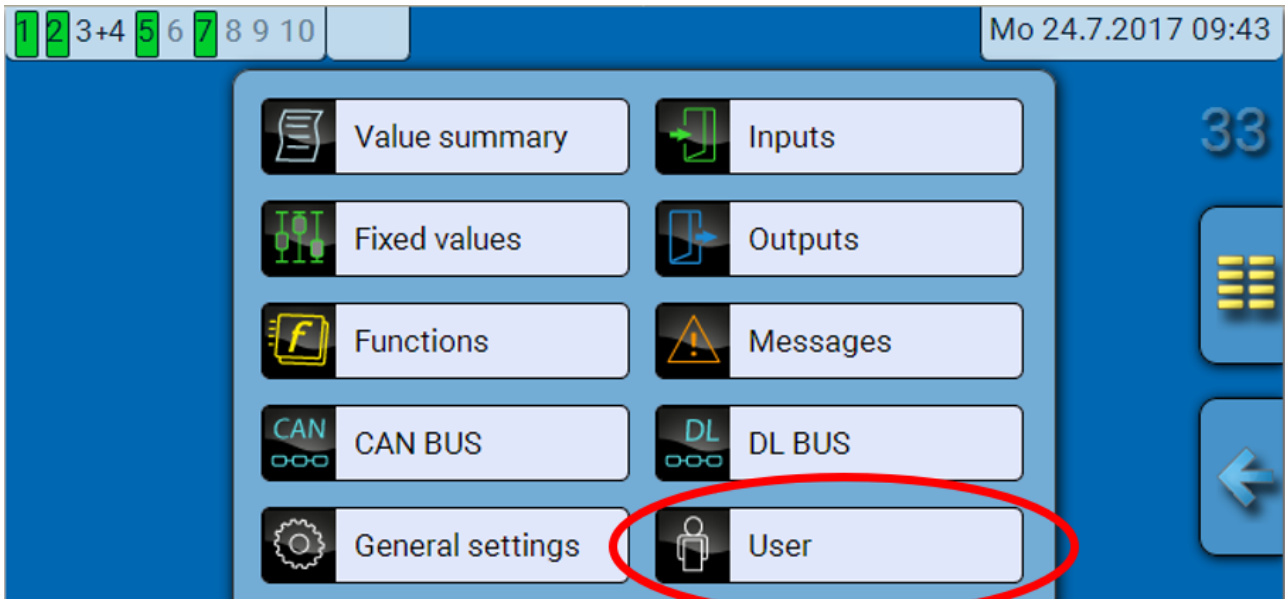
Example: Message 13 is active.



If there is at least one active message, a warning symbol will appear in the upper status line.

More detailed information about the messages is provided in the manual **Programming / Part 2: Functions, Message chapter**".

User



Current user

When entering the menu of the module, the user is in the **user level**.

To enter the Technician or Expert level a **password** must be entered, which can be set by the programmer.

After function data has been loaded, the controller returns to the user level and adopts the programmed passwords.

When the controller is started, the controller is always in the User level.

The password is set in the TAPPS2 program and can be modified by accessing the expert level via UVR16x2 or CAN-MTx2.

List of permitted actions

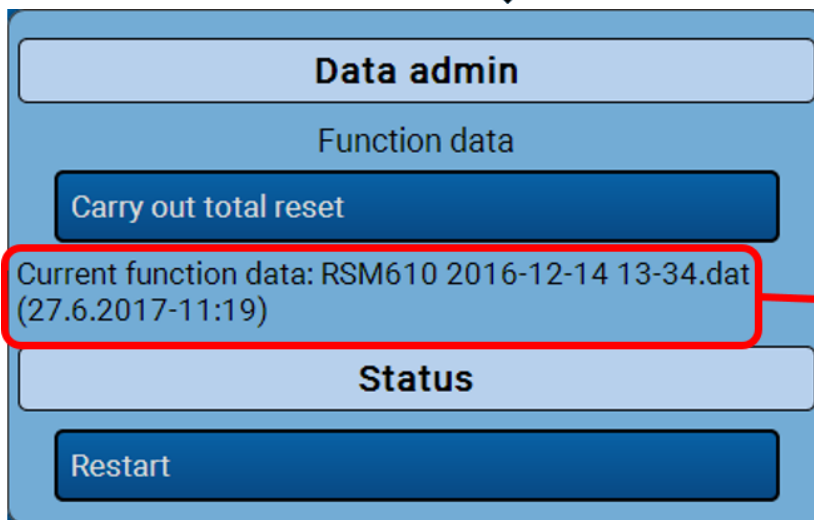
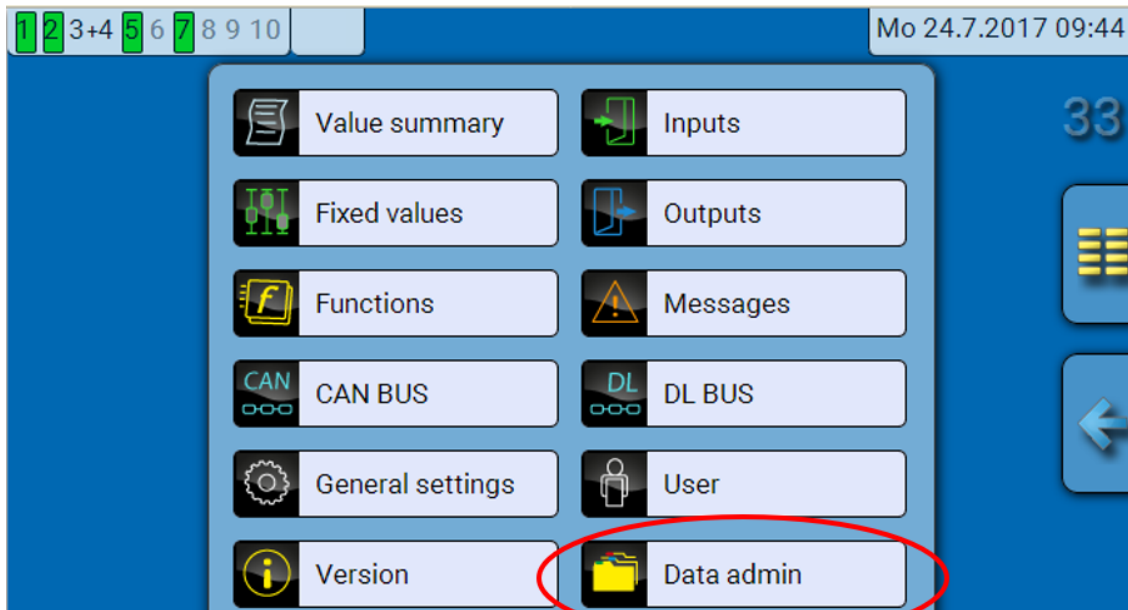
User level	Displays and permitted actions
User	<ul style="list-style-type: none"> • Function overview with options for control • Access to main menu only if enabled for "User" in the "General settings" • Summary of values • Inputs: display only, no access to the parameters • Outputs: changes to the output status of the outputs enabled for User, display of hours run, no access to the parameters • Fixed values: changes to the value or status of the fixed values enabled for User, no access to the parameters • Functions: display of the function status, no access to the parameters • Messages: display of active messages • CAN and DL bus: no access to the parameters • General settings: no access • User: change of user (with password entry) • System values: setting the date, time, location data, display of System values
Technician	<p>All of the above plus:</p> <ul style="list-style-type: none"> • Access to main menu only if enabled for Technician or User in the "General settings" • Changes to the parameters for inputs (except for type and measured variable), no creation of new ones • Changes to the parameters for outputs (except for type; status only if enabled for User or Technician), no creation of new ones • Changes to the parameters for fixed values (except for type and measured variable; value and status only if enabled for User or Technician), no creation of new ones • General settings: Changes to user defined designations and creation of new ones, selecting the currency • Functions: changes to user defined input variables and parameters • All settings in the CAN and DL bus menus • Data administration actions
Expert	All actions and all displays are accessible.

Automatic changeover

Normally, the module automatically switches back to **user mode** 30 minutes **after login** as an expert or technician.

Data administration

C.M.I. menu Data administration



Anzeige der aktuellen Funktionsdaten mit Zeitpunkt des Ladens

Total reset

A total reset can only be carried out from the Technician or Expert level and requires confirmation when prompted.

A **total reset** deletes the function modules, the parameter settings of all inputs and outputs, bus inputs and outputs, fixed values and system values. The settings for the CAN node number and the CAN bus rate are retained.

After tapping the screen, you will be asked to confirm that you want a total reset to be carried out.

Restart

At the end of the "Data admin" menu, there is an option to restart the controller following a confirmation prompt, without disconnecting the controller from the network.

Loading function data or updating firmware via C.M.I.

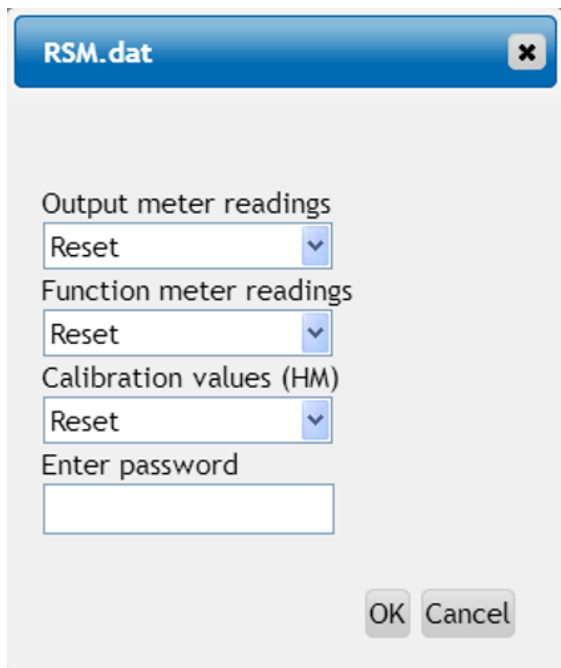
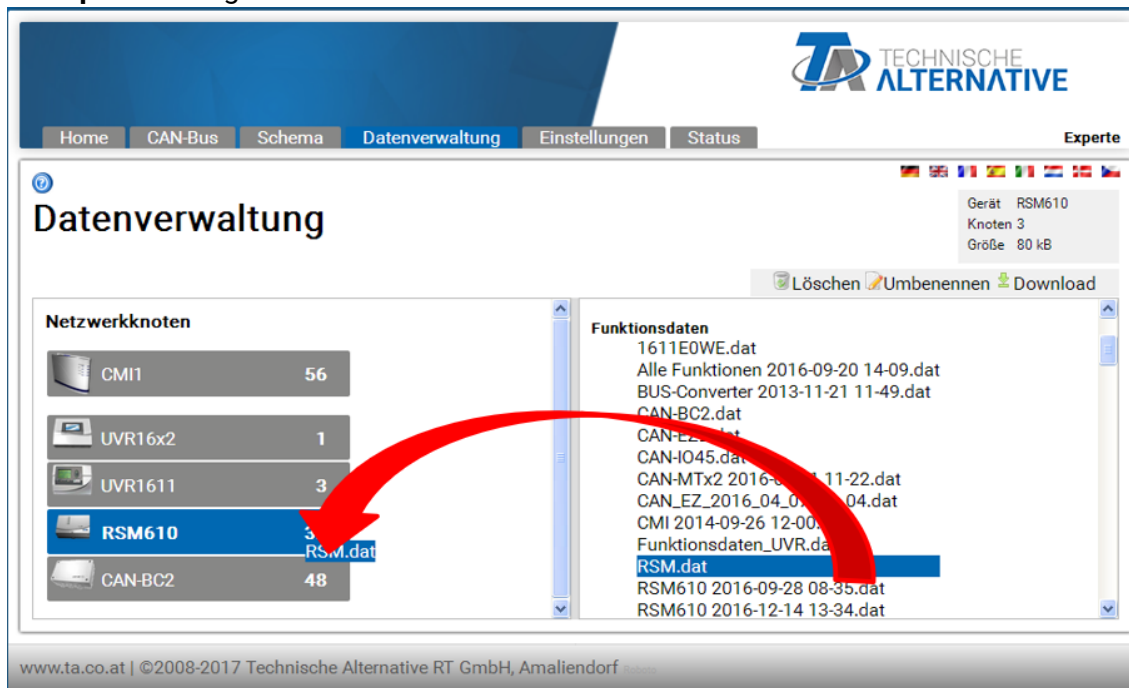
In the **Data admin** C.M.I. menu, function data can be loaded or saved and the firmware (the operating system) can be loaded onto the module.

A separate operating system version is required for each language. Consequently, unlike the UVR16x2 controller, the module does not have a menu for language selection.

The required file must first be loaded onto the SD card of the C.M.I., and then the file is transferred onto the RSM610.

You can perform these actions by simply dragging the files while holding down the left mouse button ("**drag & drop**").

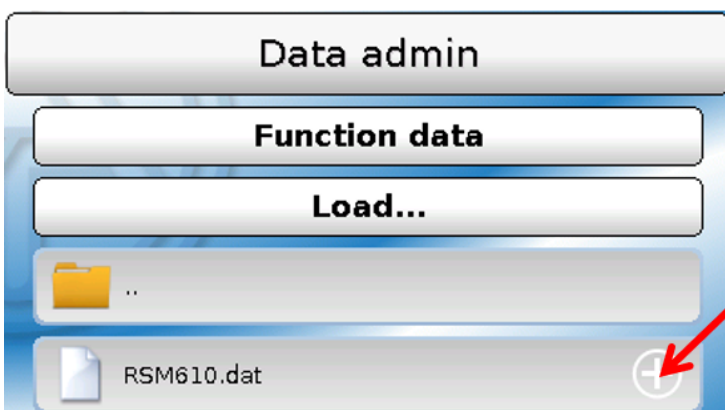
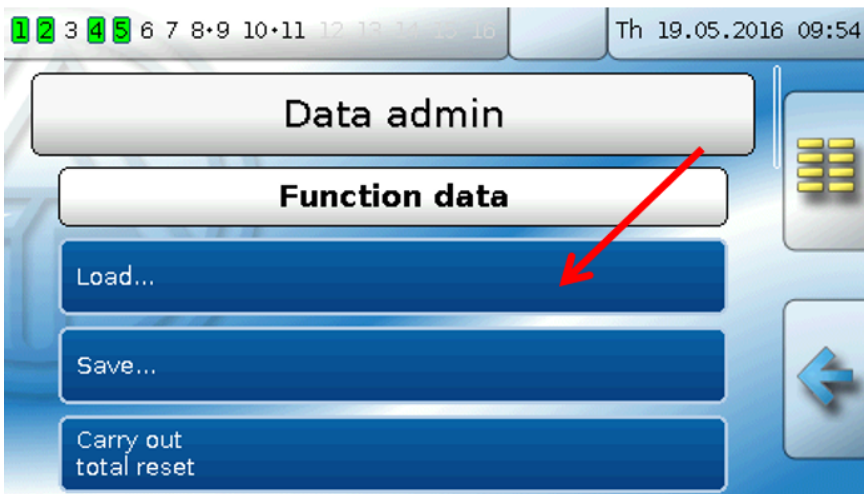
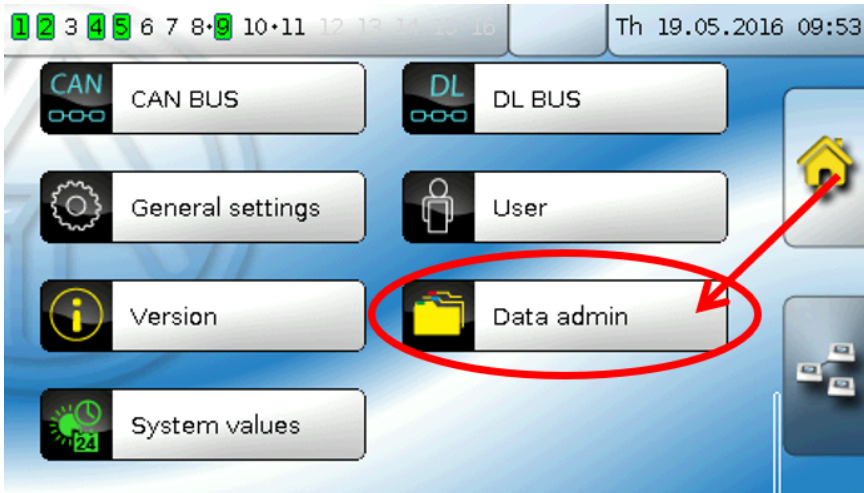
Example: Loading function data from the SD card of the C.M.I. onto the RSM610



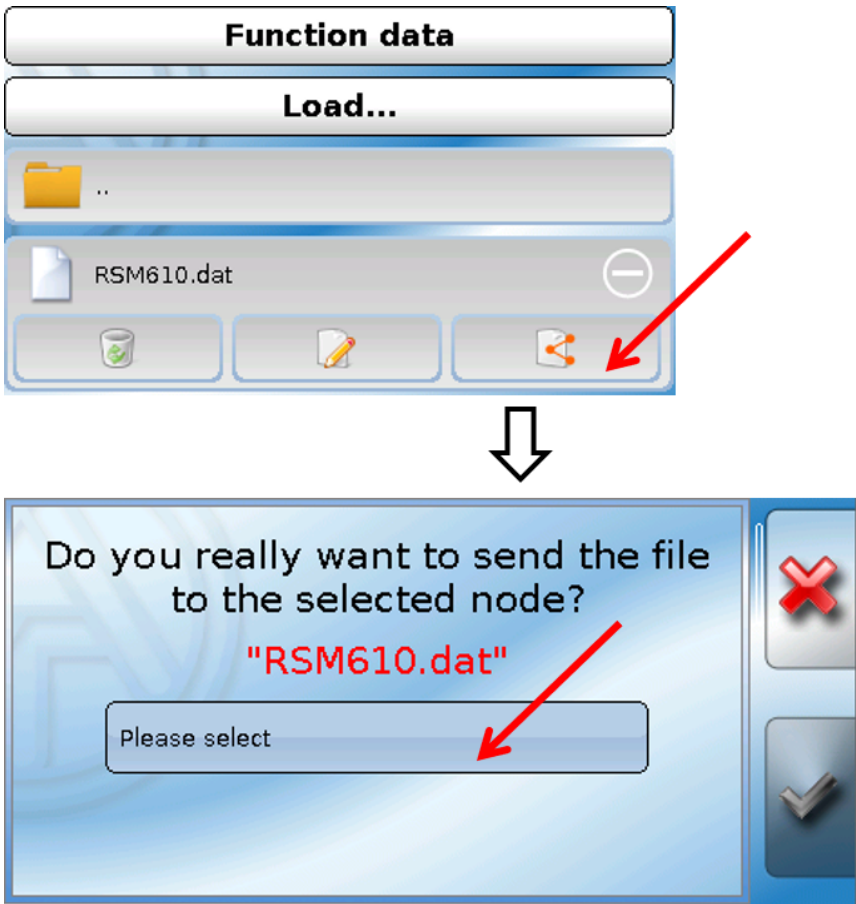
Before the start of the data transfer, you will be asked to provide meter readings and the **expert** or **technician password**.

Loading function data or updating firmware via UVR16x2 or CAN-MTx2


The data transfer can only be carried out in the technician or expert level, in the **data admin** menu.



In order to send the file to the RSM610, tap the plus symbol. A number of options will appear for selection.



Select the **node number** and then tap .

Tapping  cancels the action.

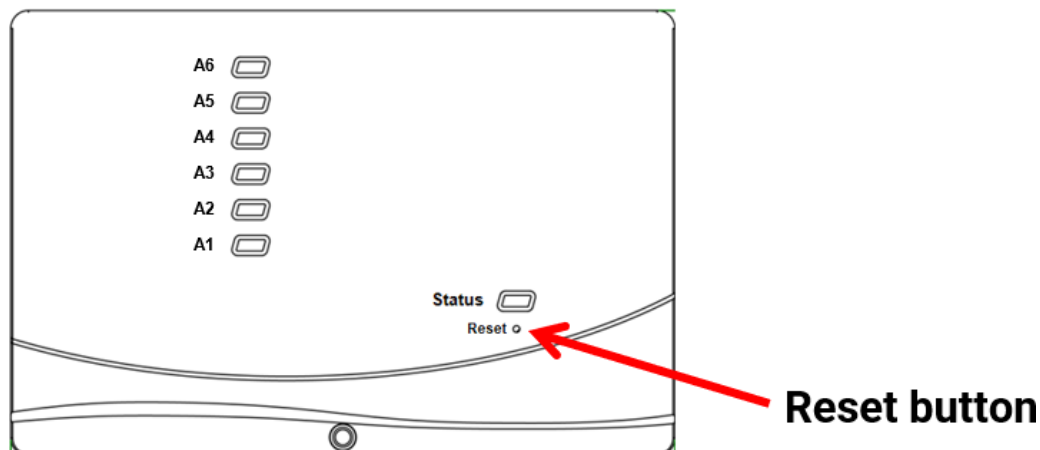
The data transfer is only possible after a technician or expert password has been entered for the target device.

Reset

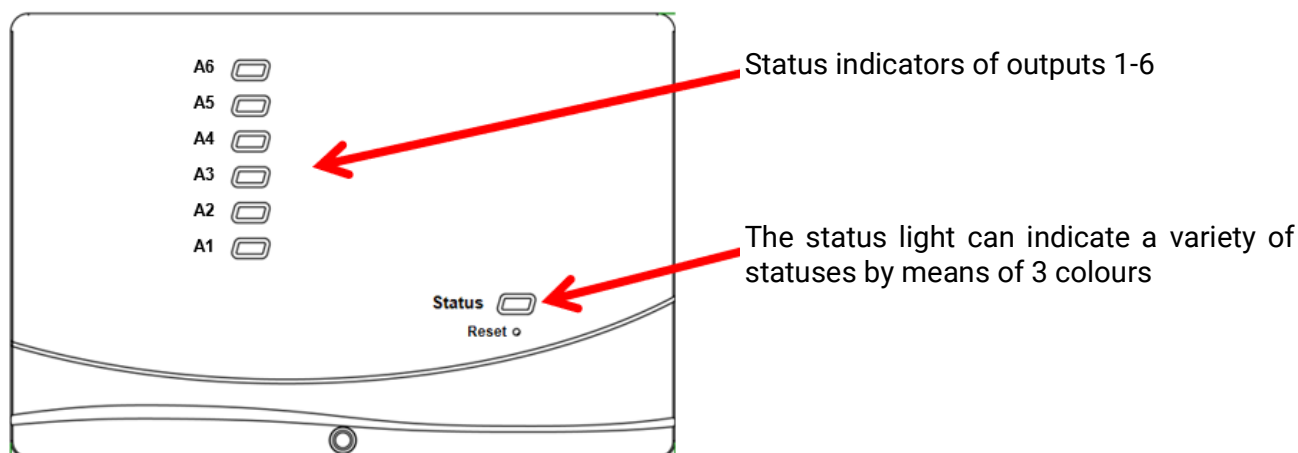
Briefly pressing the reset button on the front of the controller (with a narrow-tip pen) resets the controller.

Total reset: Holding the button pressed down **for a long time** causes the status LED to start flashing **quickly**. The button must be held down until the quick flashing changes to slow flashing.

A **total reset** deletes all function modules, the parameter settings of all inputs and outputs, bus inputs and outputs, fixed values, system values and the CAN bus settings.



LED status indicators



An active **Message** can be displayed by a change in a status indicator. This can be set in the **Parameters menu** of the "**Message**" function.

Status-Anzeigen beim Reglerstart

Indicator light	Explanation
Steady red light	The controller is booting up (= start routine after switching on, resetting or updating) or
Steady orange light	Hardware is initialising after booting up
Flashing green light	After hardware initialisation, the controller waits about 30 seconds to receive all the information necessary for a function (sensor values, network inputs)
Steady green light	Normal operation of the controller

Technical data RSM610

All inputs	Temperature sensors of type PT1000, KTY (2 k Ω /25 °C), KTY (1 k Ω /25 °C), PT100, PT500, Ni1000, Ni1000TK5000 and room sensors RAS or RASPT, radiation sensor GBS01, thermocouple THEL, humidity sensor RFS, rain sensor RES01, pulses max. 10 Hz (e.g. for flow rate transducer VSG), voltage up to 3.3 V DC , resistance (1-100 k Ω), and as a digital input
Inputs 4, 5	Auxiliary voltage (0-10 V DC)
Input 6	Also pulse input up to 20 Hz , for flow rate transducer VSG or S0 signals, for example
Outputs 1 - 5	Relay outputs, partially with N/O contacts
Output 6	Relay changeover contact – potential-free
Outputs 7 - 10	Analogue outputs 0-10 V (max. 20 mA) or PWM (10 V/1 kHz), or expansion option as switching outputs with auxiliary relay modules
Output 7 RSM610-A24, -MB24	Supply for external 24 V devices, max. 6 W in total along with the 12 V devices
Output 9 RSM610-MB, -MB24	M-Bus input for up to 4 M-Bus meters
Max. breaking capacity	Relay outputs 230V / 3A each
Max. bus load (DL bus)	100%
CAN bus	Standard data rate 50 kbit/s, adjustable from 5 to 500 kbit/s
M-Bus RSM610-MB, -MB24	Standard baud rate 2400 Bd; adjustable from 300 to 38,400 Bd; data from max. 4 M-Bus devices can be read
12V	Power supply for external devices, max. 6 W in total
Differential temperatures	With separate start and stop differential
Threshold values	With separate start and stop differential or fixed hysteresis
Temperature measuring range	PT100, PT500, PT1000: -200 °C to +850 °C with a resolution of 0.1 K All other temperature sensors: -49.9 °C to +249.9 °C with a resolution of 0.1 K
Temperature accuracy	Typ. 0.4 K, max. \pm 1 K within a range of 0 - 100 °C for PT1000 sensors
Resistance accuracy	max. 1,6% at 100k Ω (measured variable: Resistance, process variable: Resistance)
Voltage accuracy	Typ.1 %, max. 5 % of maximum input measuring range
Output 0-10V accuracy	Max. -2% to +6%
Connection	100 - 230 V, 50 - 60 Hz, (outputs A1 – A5 and device are fused jointly with 6.3 A (fast))
Supply cable	3 x 1 mm ² H05VV-F to EN 60730-1 (cable with standard plug included in the standard sensor pack)
Power consumption	1.0 – 1.9 W, subject to the number of active switching outputs
IP rating	IP40
Protection class	II – double insulated <input type="checkbox"/>
Permissible ambient temperature	+5 to +45°C

Subject to technical modifications.

© 2020

Legal notice

These operating instructions are protected by copyright.

Use outside the copyright requires the consent of the company Technische Alternative RT GmbH.

This applies in particular to reproductions, translations and electronic media.

Technische Alternative RT GmbH

A-3872 Amaliendorf, Langestraße 124

Tel.: +43 (0)2862 53635

Fax +43 (0)2862 53635 7

E-Mail: mail@ta.co.at

-- www.ta.co.at --



©2020