

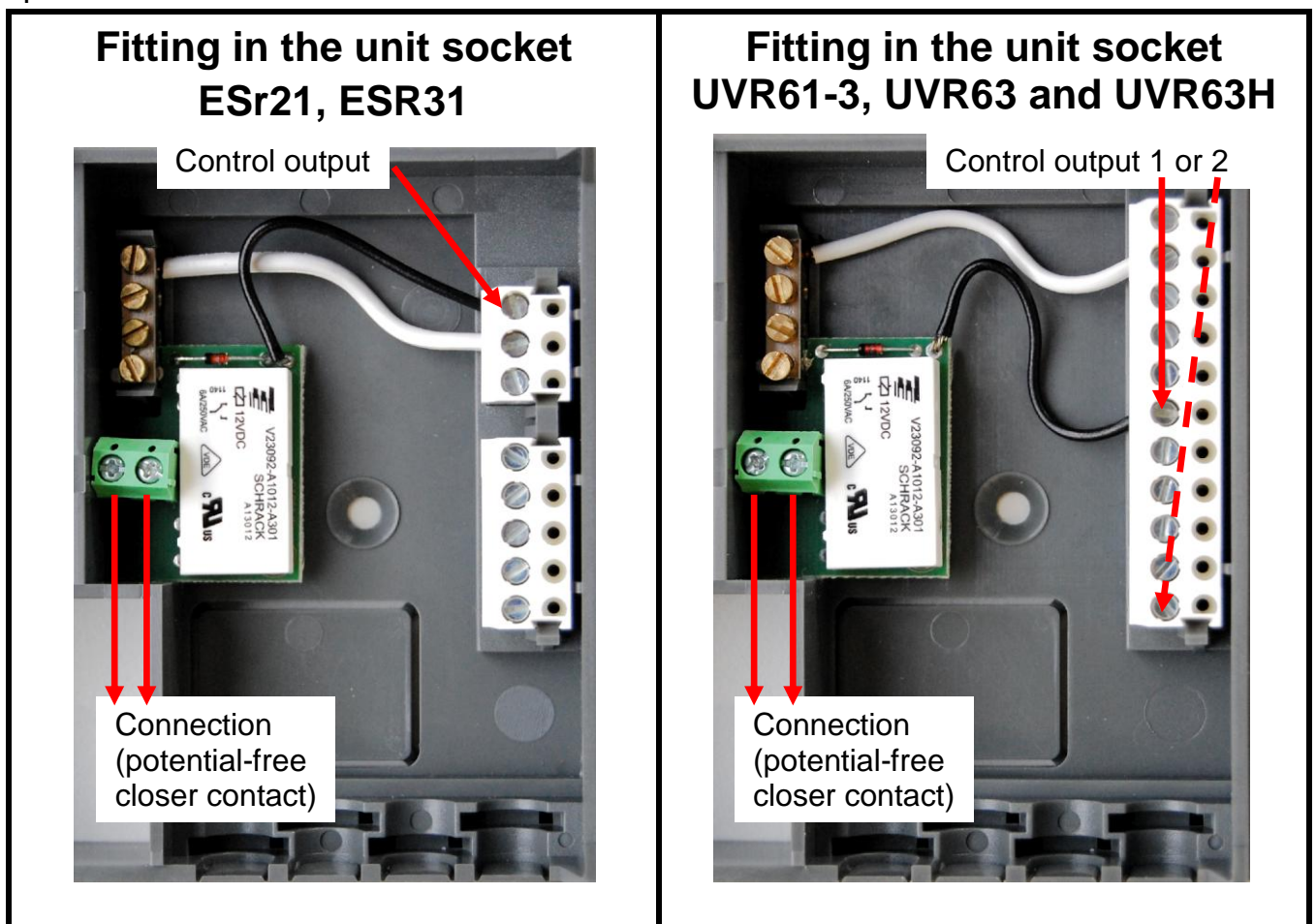


Relay module

for ESR21, ESR31, UVR61-3, UVR63 and UVR63H

The controls can be upgraded with the relay module **HIREL-STAG**.

Dependent on the control type, the relay module is available for various applications. Activation of the relay module is described in the respective valid controller operating manual.



The relay module is connected to the sensor earth and a control output in accordance with the above images. The 4-pole earth strip is enclosed for the ESR31 controller.

The closer contact is potential-free.

If used in the mains voltage range, the relay must not be used in the controller sensor range rather must be installed in its own suitable housing.

Max. switching capacity: 230V/1A

If a **high efficiency pump** is to be switched with the auxiliary relay, due to the lower switching capacity, an **external** relay with sufficient switching capacity must be interposed.